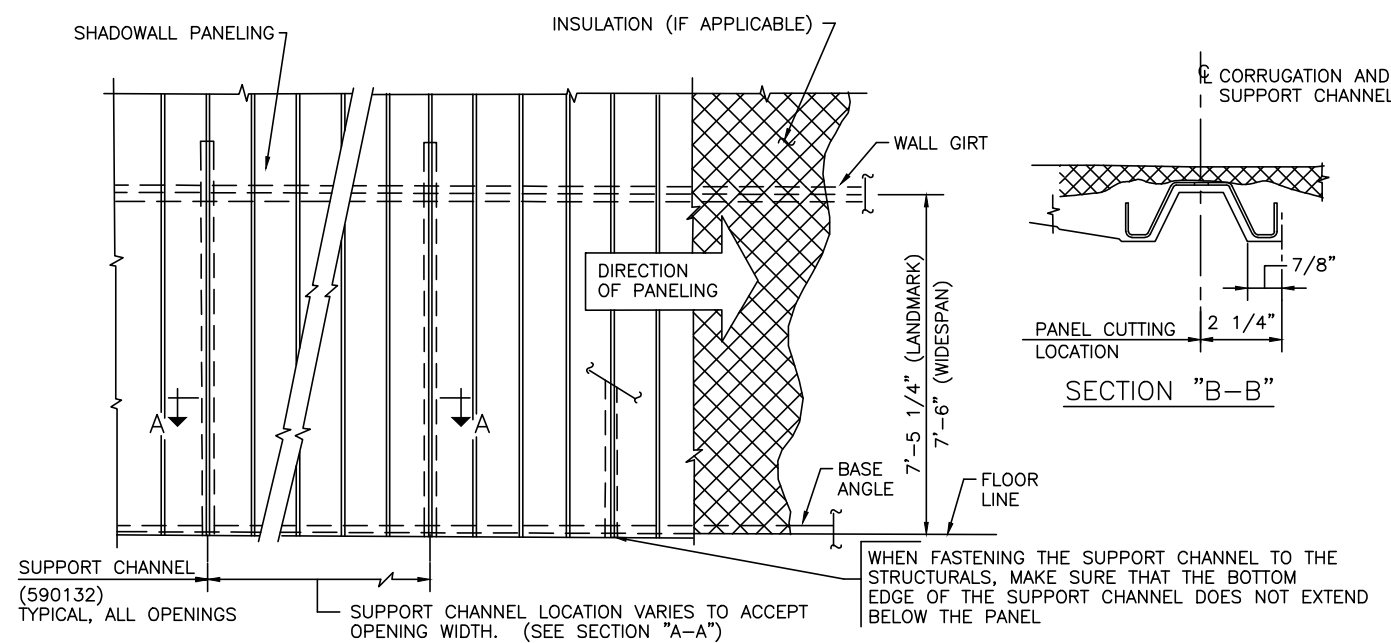


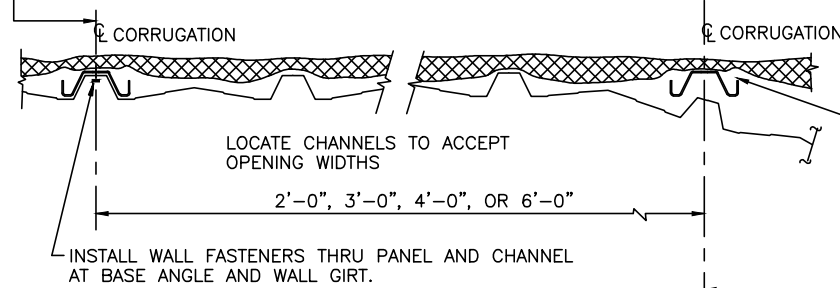
# **SHADOWALL WINDOW INSTALLATION INSTRUCTIONS**



**WALL INSTALLATION WITH SUPPORT CHANNELS**

ERECTION STEP NO. 1

SEE ACCESSORY LOCATION LAYOUT DRAWING P-081201 FOR INCREMENT REQUIREMENTS



NOTE: SUPPORT CHANNELS ARE REQUIRED AT ALL WINDOW LOCATIONS.

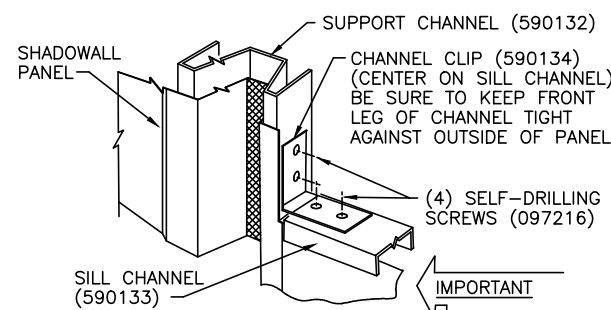
PLACE SUPPORT CHANNEL AT APPROPRIATE CORRUGATION BASED ON OPENING WIDTH REQUIREMENT. APPLY PANEL OVER CHANNEL AND INSTALL WALL FASTENERS THRU PANEL AND CHANNEL AT BASE ANGLE AND WALL GIRT. USE PRE-PUNCHED HOLE IN BOTTOM OF CHANNEL TO LOCATE CHANNEL AT BASE CONNECTION

INSTALL ADDITIONAL SUPPORT CHANNELS AS REQUIRED FOR MULTIPLE OPENINGS.

IMPORTANT NOTE: ADDITIONAL FASTENERS ARE REQUIRED THRU CORRUGATION INTO CHANNEL. (SEE DETAIL 1 FOR OPENING AND FASTENER LOCATION)

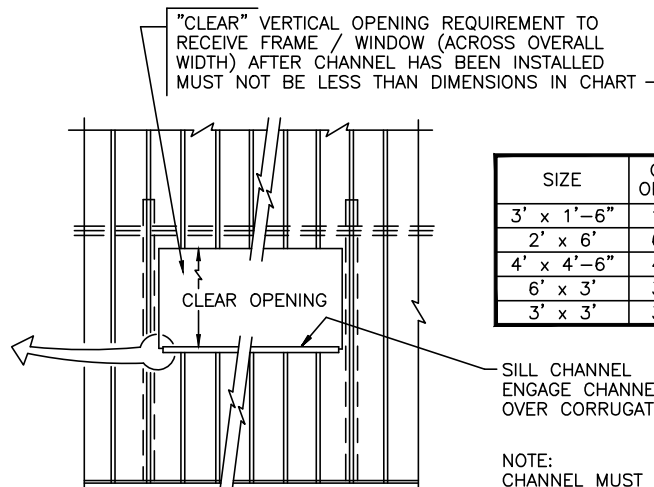
**SECTION "A-A" (SUPPORT CHANNEL INSTALLATION)**

SILL CHANNEL USAGE CHART	
FRAME WIDTH	SILL CHANNEL (590133) 5'-7 3/8" LONG
2'	FIELD CUT TO 1'-7 3/8" (YIELDS 3 PIECES)
3'	FIELD CUT TO 2'-7 3/8" (YIELDS 2 PIECES)
4'	FIELD CUT TO 3'-7 3/8" (YIELDS 1 PIECE)
6'	USE 1 PIECE FULL LENGTH



**CHANNEL CLIP DETAIL**

(TYPICAL BOTH ENDS OF SILL CHANNEL)  
NOTE: SEE CHART FOR SILL CHANNEL CUTTING LENGTHS



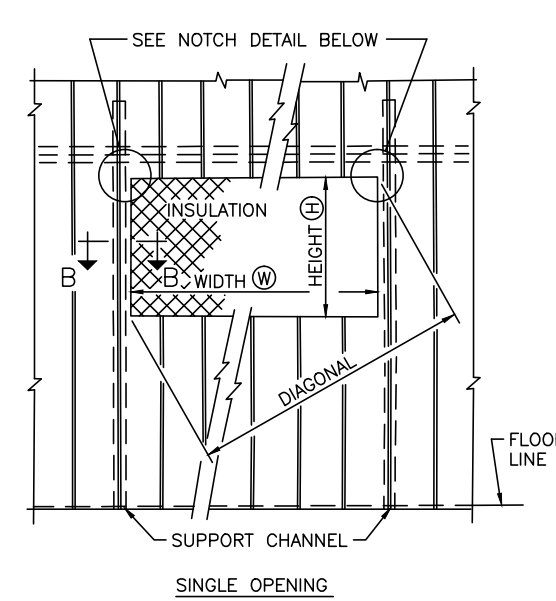
**SILL CHANNEL INSTALLATION**

ERECTION STEP NO. 3

SIZE	CLEAR OPENING
3' x 1'-6"	1'-7"
2' x 6'	6'-1"
4' x 4'-6"	4'-7"
6' x 3'	3'-1"
3' x 3'	3'-1"

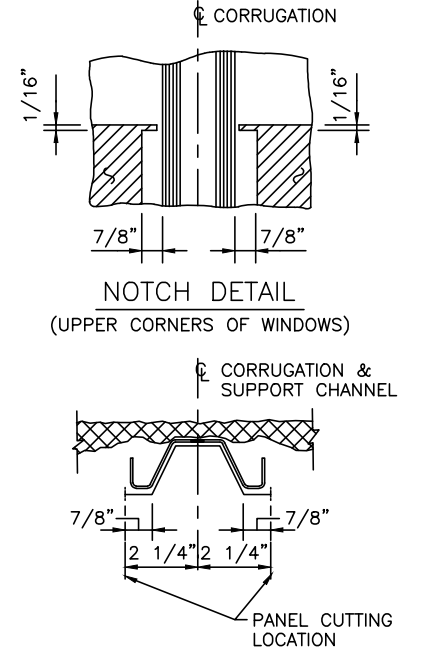
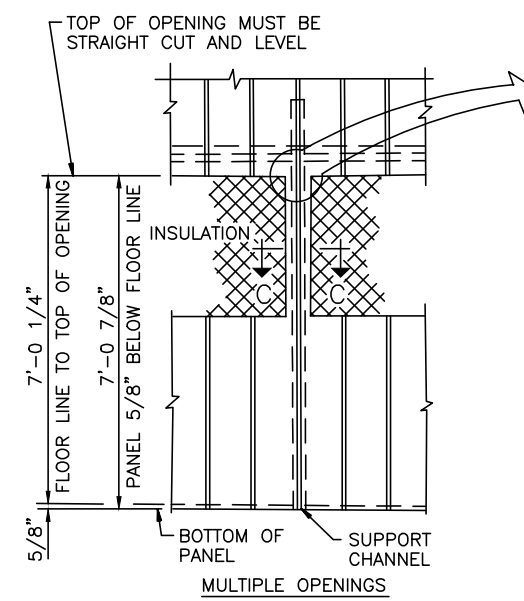
NOTE: CHANNEL MUST BE HELD DOWN FIRMLY ONTO PANEL DURING CLIP INSTALLATION

IMPORTANT NOTE: DO NOT REMOVE INSULATION IN "CUTOUT" AREA (SEE DWG. P-081208)



**PANEL OPENING "CUTOUT" REQUIREMENTS**

ERECTION STEP NO. 2

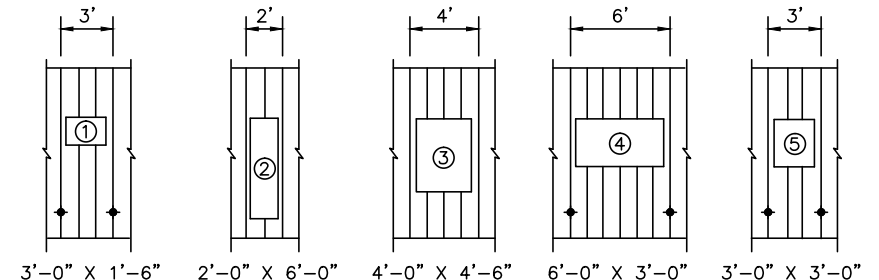


**SECTION "C-C"**

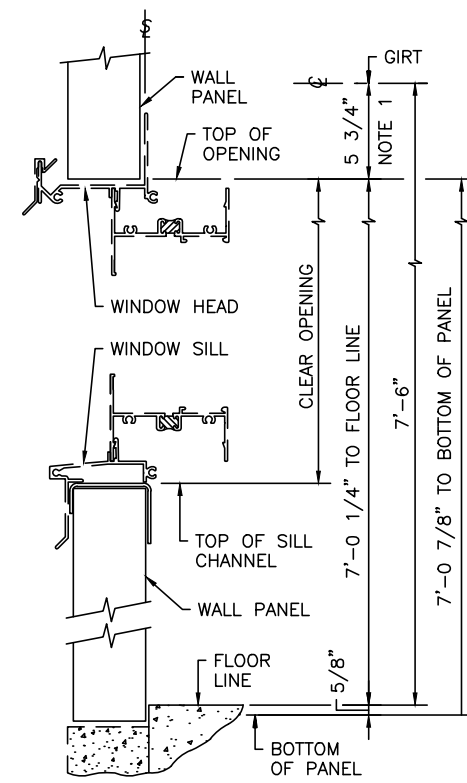
**PANEL OPENING CUTOUT CHART**

OPENING NUMBER	OPENING (NOMINAL SIZE) WIDTH   HEIGHT	CUTOUT SIZE *		DIAGONAL
		(W) WIDTH	(H) HEIGHT	
		①	3'-0" X 1'-6"	
②	2'-0" X 6'-0"	1'-7 1/2"	6'-1 1/4"	6'-3 13/16"
③	4'-0" X 4'-6"	3'-7 1/2"	4'-7 1/4"	5'-10 5/16"
④	6'-0" X 3'-0"	5'-7 1/2"	3'-1 1/4"	6'-5 1/8"
⑤	3'-0" X 3'-0"	2'-7 1/2"	3'-1 1/4"	4'-0 3/4"

\* CUTOUT DEVIATION FROM WIDTH & HEIGHT DIMENSIONS SHOWN MUST NOT BE GREATER THAN 1/4" OR LESS THAN 1/8"



◆ DENOTES ADDITIONAL FASTENERS REQUIRED  
**DETAIL 1 (OPENING VARIATIONS)**

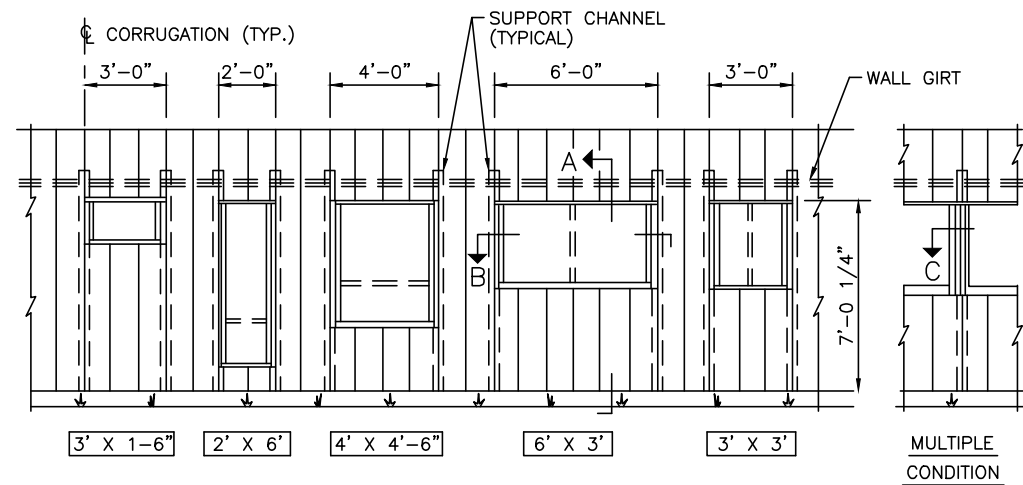


**SECTION D-D**

**ERECTION NOTES**

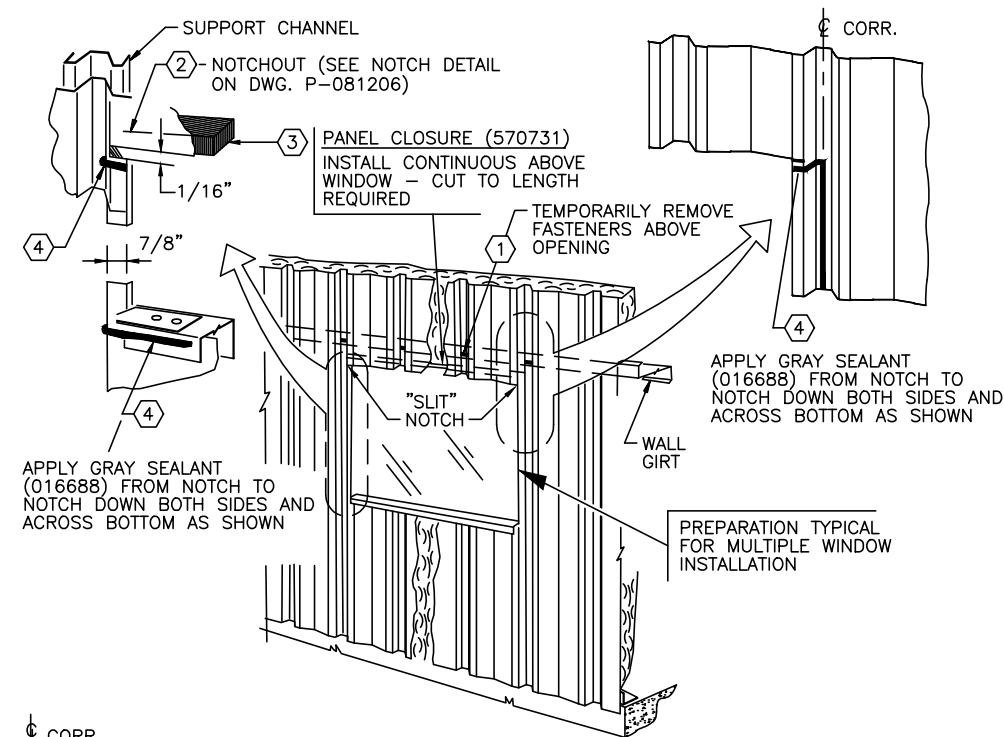
- INSTALL PANELING ON WALL AREA, WITH INSULATION IN PLACE AS MAY BE REQUIRED.  
  
ADD SUPPORT CHANNELS INTO CORRUGATIONS AT RESPECTIVE LOCATIONS AS REQUIRED TO ACCEPT FRAMED OPENING. (SEE ERECTION STEP NO. 1)  
  
NOTE: WALL AREA MAY BE paneled IN ITS ENTIRETY. WITH SUPPORT CHANNELS IN PLACE, BEFORE CUTTING OPENINGS. ALL WINDOW CLEAR OPENINGS ARE LOCATED WITH THE TOP OF OPENING CUTOUT AT 5 3/4" DOWN FROM THE 7'-6" GIRT LOCATION, REGARDLESS OF WINDOW HEIGHT, TO PROVIDE A UNIFORM APPEARANCE FOR WALL ACCESSORIES.
- FIELD CUT OPENINGS INTO WALL. IT IS IMPORTANT THAT CUTOUT BE MADE AS ACCURATE AS POSSIBLE, WITH A STRAIGHT AND LEVEL CUT AT TOP "EXPOSED" LOCATION. (SEE ERECTION STEP NO. 2) IT IS SUGGESTED THAT NIBBLERS AND OR RECIPROCATING SAW BE USED TO MAKE A SMOOTH STRAIGHT CUT.
- ADD SILL CHANNEL. CUT TO LENGTH AS MAY BE REQUIRED. (SEE ERECTION STEP NO. 3)

SHADOWWALL WINDOW OPENING CUTOUTS AND SUPPORT CHANNEL INSTALLATION			
DRAWN BY	CHECKED BY	GROUP NUMBER: 37-028-01	
RHE	BSN		
FIRST RELEASE DATE	REVISION DATE		
01/21/10	01/04/13	B	P-081206 01

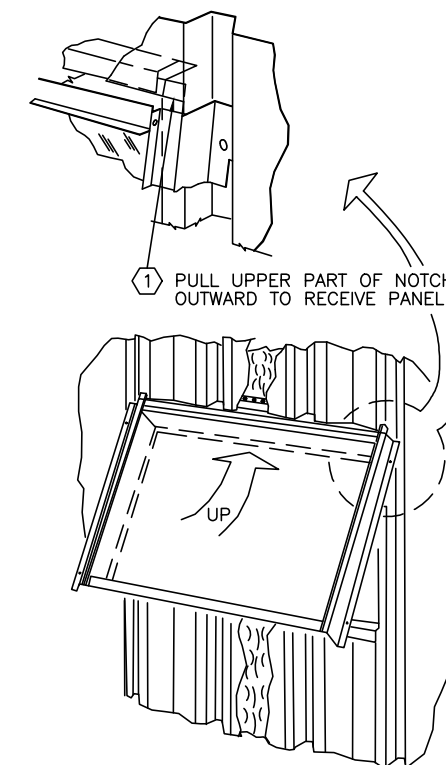


**WINDOW VARIATIONS**

NOTE: FOR OPENING PREPERATION AND WINDOW SUPPORT STUCTURAL INSTALLATION, SEE DWG. P-081206



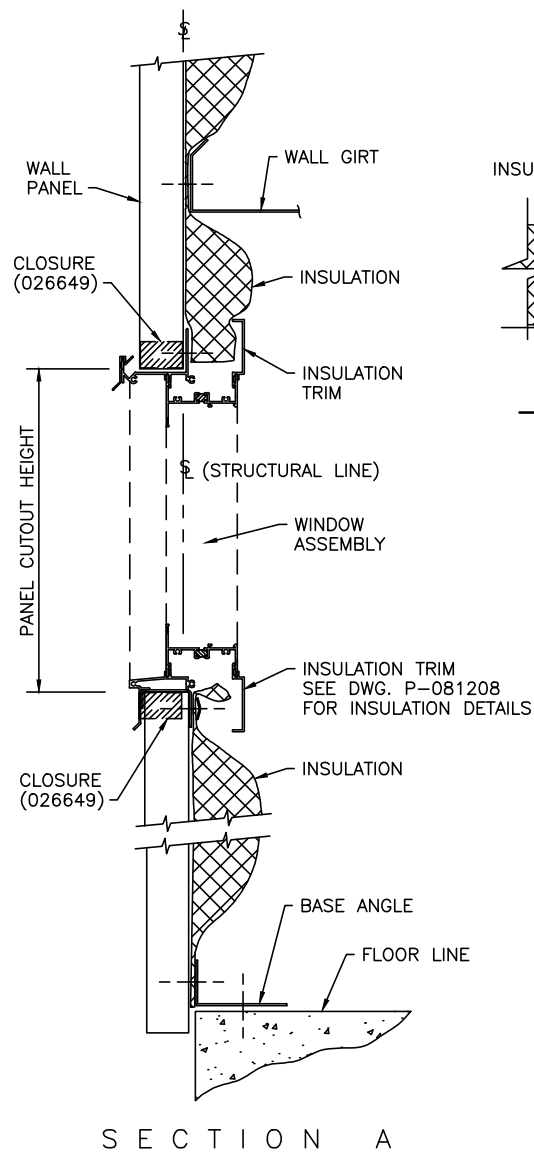
**STEP 1 | OPENING PREPARATION**



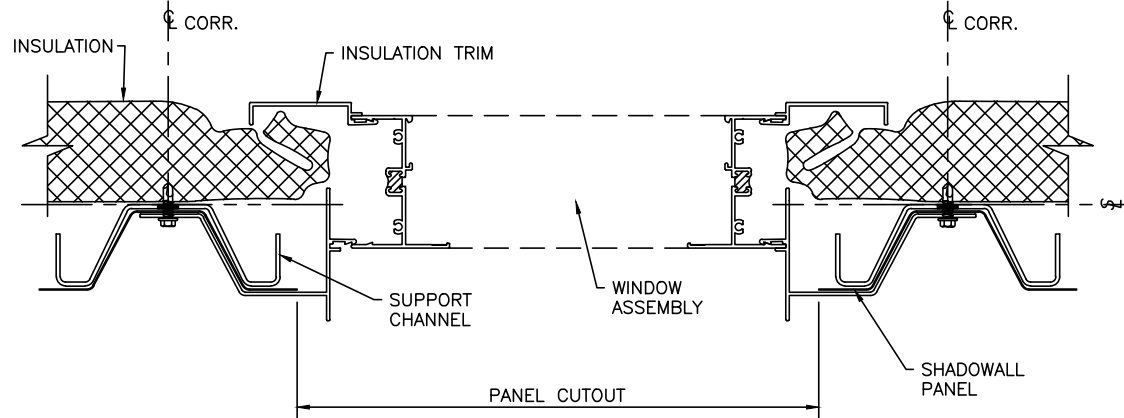
**STEP 2 | INSTALL WINDOW**

PANEL NOTCHES. PULL OUTWARD ON PANEL ABOVE WINDOW AND PUSH FRAME UP AND INTO OPENING

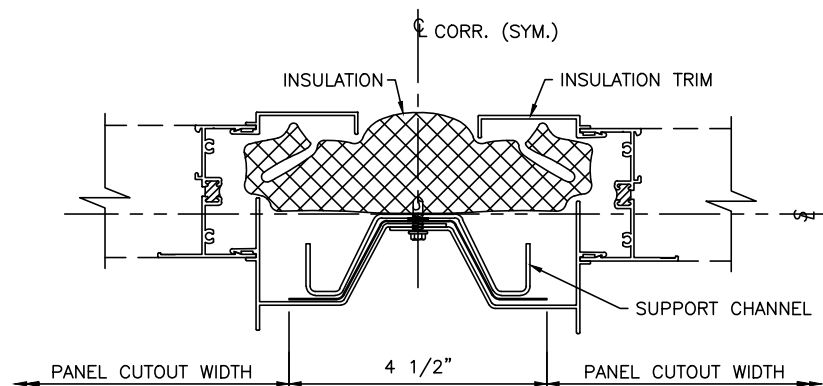
**STEP 2 | INSTALL WINDOW**



**SECTION A**

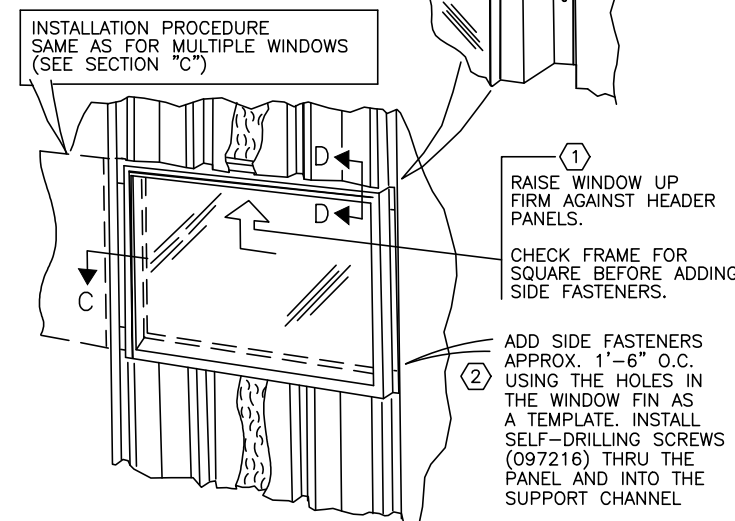


**SECTION B**

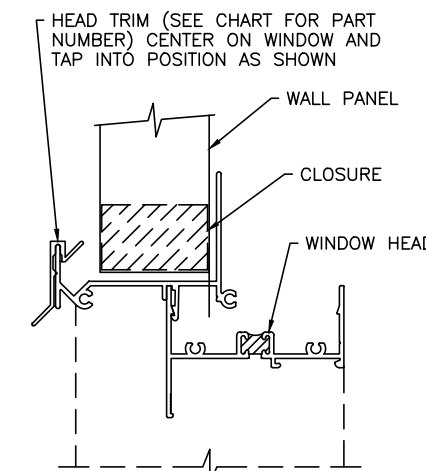


**SECTION C**

3 APPLY CLEAR SILICONE SEALANT (NOT BY B.M.C.) TO CLOSE VOID AT FIN TO PANEL INTERSECTION (TYPICAL BOTH SIDES OF FRAME)



**STEP 3 | POSITION & FASTEN WINDOW**



**SECTION D-D**

**STEP 4 | HEAD TRIM INSTALLATION**

**WINDOW ASSEMBLY PART NUMBERS**

	PROJ. WINDOWS		SLIDE WINDOWS			FIXED WINDOWS				
	2'X6'	4'X4'-6"	3'X1'6"	3'X3'	6'X3'	2'X6'	3'X1'-6"	3'X3'	4'X4'-6"	6'X3'
WITH THERMAL BREAK	590187	590188	590189	590190	590191	590205	590206	590207	590208	590209
HEAD TRIM*	590172	590173	590171	590171	590174	590172	590171	590171	590173	590174

\* ONE PEICE OF HEAD TRIM IS INCLUDED IN EACH WINDOW PACKAGE.

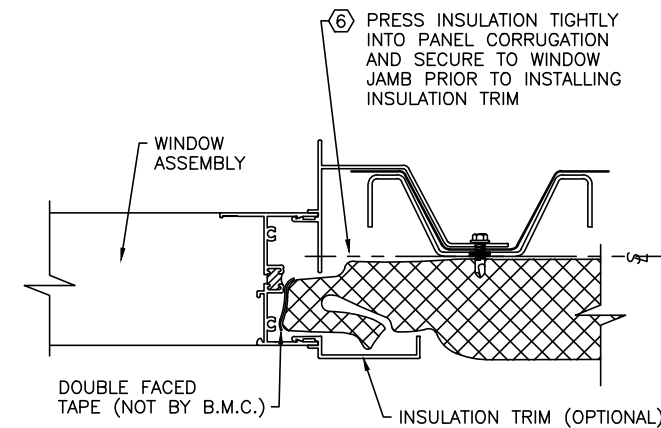
⬡ DENOTES ERECTION SEQUENCE

**SHADOWWALL WINDOW INSTALLATION**

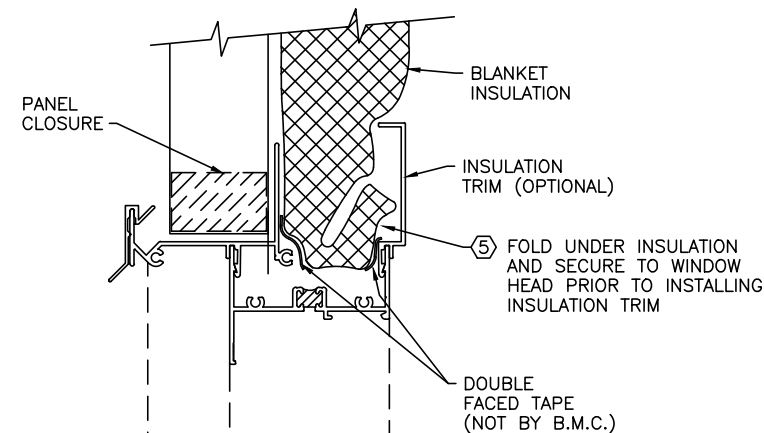
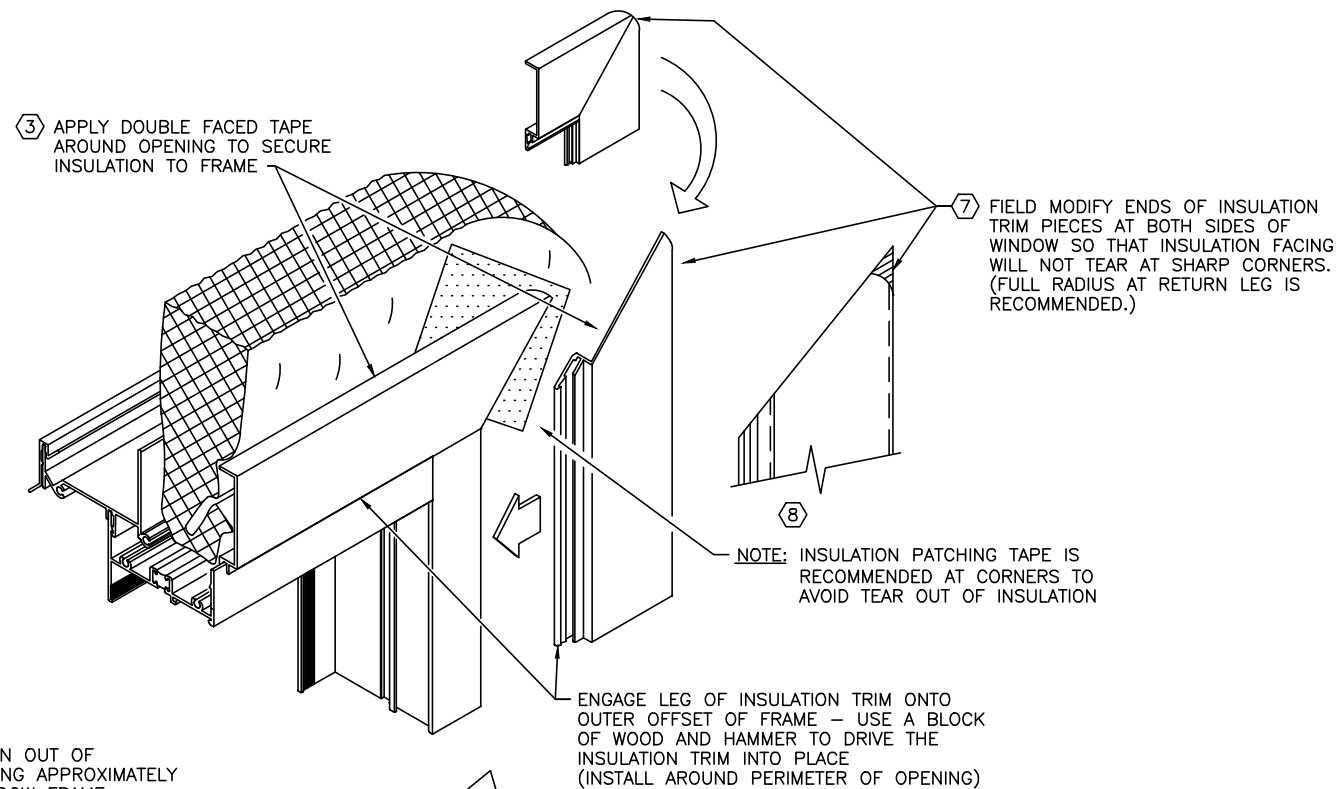
DRAWN BY	CHECKED BY	GROUP NUMBER:	37-028-01
RHE	BSN	B	P-081207
FIRST RELEASE DATE	REVISION DATE		01
01/21/10	01/04/13		

INSULATION TRIM USAGE CHART	
WINDOW SIZE	PACKAGE NUMBER
3'-0" X 1'-6"	590143
2'-0" X 6'-0"	590144
4'-0" X 4'-6"	590145
6'-0" X 3'-0"	590146
3'-0" X 3'-0"	590181

NOTE: INSULATION TRIM PACKAGES ARE OPTIONAL  
EACH PACKAGE CONTAINS (4) PIECES (1 HEAD,  
2 JAMBS AND 1 SILL PIECE)



SECTION AT WINDOW JAMB

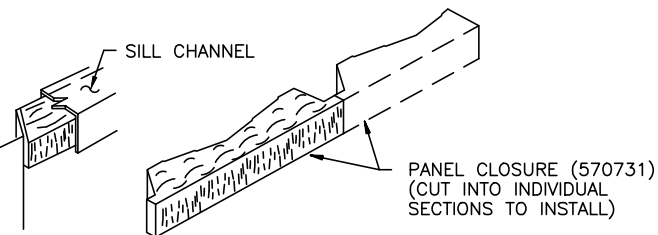
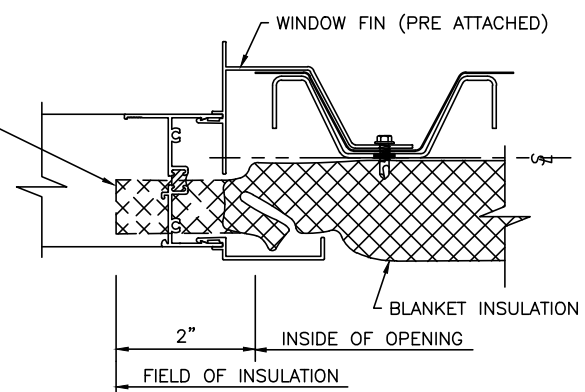
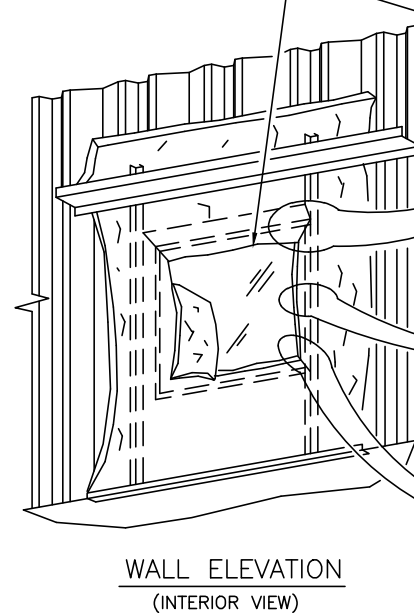


4 CENTER INSULATION RETAINER ON SILL CHANNEL AND DRILL 5/16" Ø HOLES IN SILL CHANNEL USING PUNCHING IN INSULATION RETAINER AS A TEMPLATE

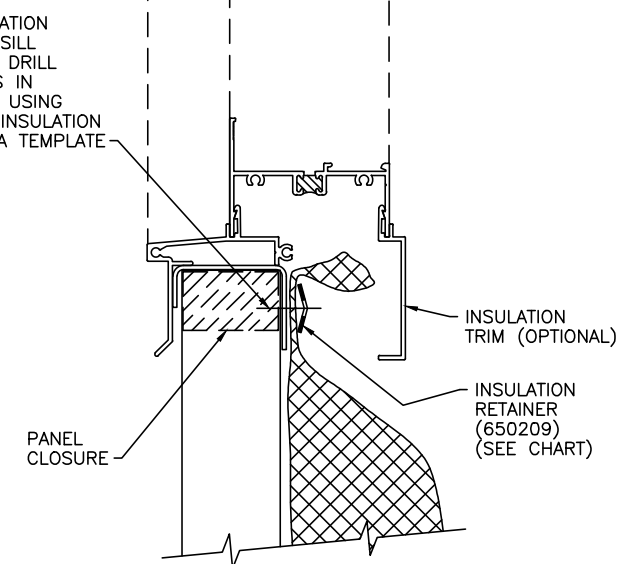
INSULATION RETAINER USAGE CHART	
WINDOW SIZE	INSULATION RETAINER (650209) (3'-2")
3'-0" X 1'-6"	USE 1 PIECE, CUT TO 2'-8"
2'-0" X 6'-0"	USE 1 PIECE, CUT TO 1'-8"
4'-0" X 4'-6"	USE 1 FULL PIECE
6'-0" X 3'-0"	USE 2 PIECE, CUT TO 2'-8"
3'-0" X 3'-0"	USE 1 PIECE, CUT TO 2'-8"

⬡ DENOTES ERECTION SEQUENCE

1 CUT INSULATION OUT OF WINDOW OPENING APPROXIMATELY 2" INSIDE WINDOW FRAME



2 PULL INSULATION DOWN ALONG BOTTOM OF FRAME AND INSTALL CLOSURES UP INTO SILL CHANNEL



VERTICAL SECTION AT WINDOW (HEAD AND SILL)

SHADOWALL WINDOW INSTALLATION INSULATION TRIM AND CLOSURE APPLICATION			
DRAWN BY	CHECKED BY	GROUP NUMBER: 37-028-01	
RHE	BSN	B	P-081208 01
FIRST RELEASE DATE	REVISION DATE		
01/21/10	01/04/13		