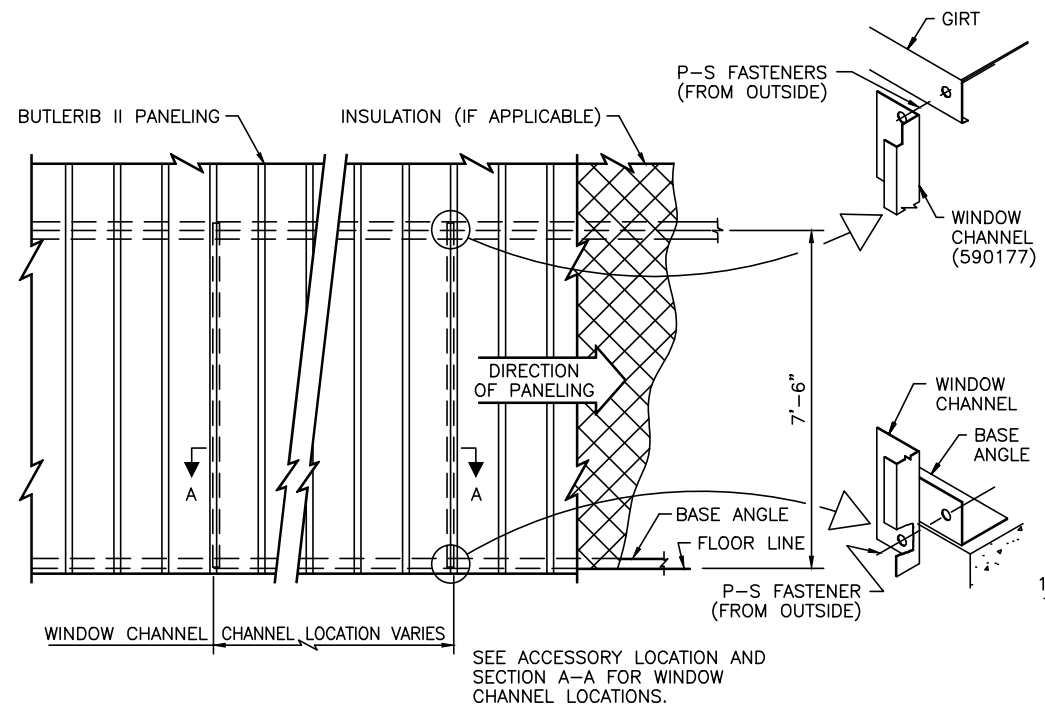
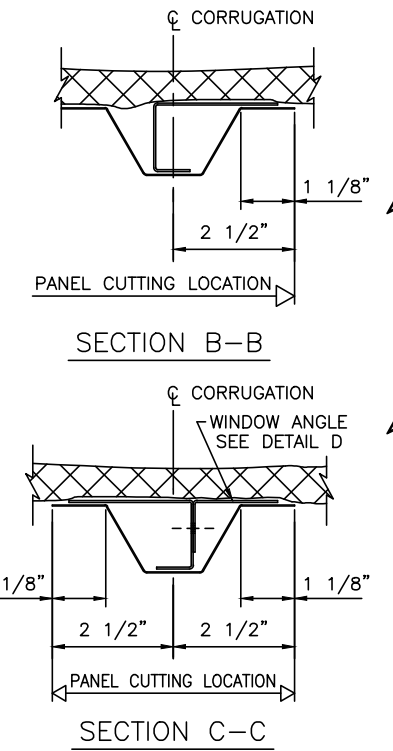


**BUTLERIB II WINDOW PANEL
CUT OUT
INSTALLATION INSTRUCTIONS**

DO NOT REMOVE INSULATION IN "CUTOUT" AREA - SEE DRAWING P-081081

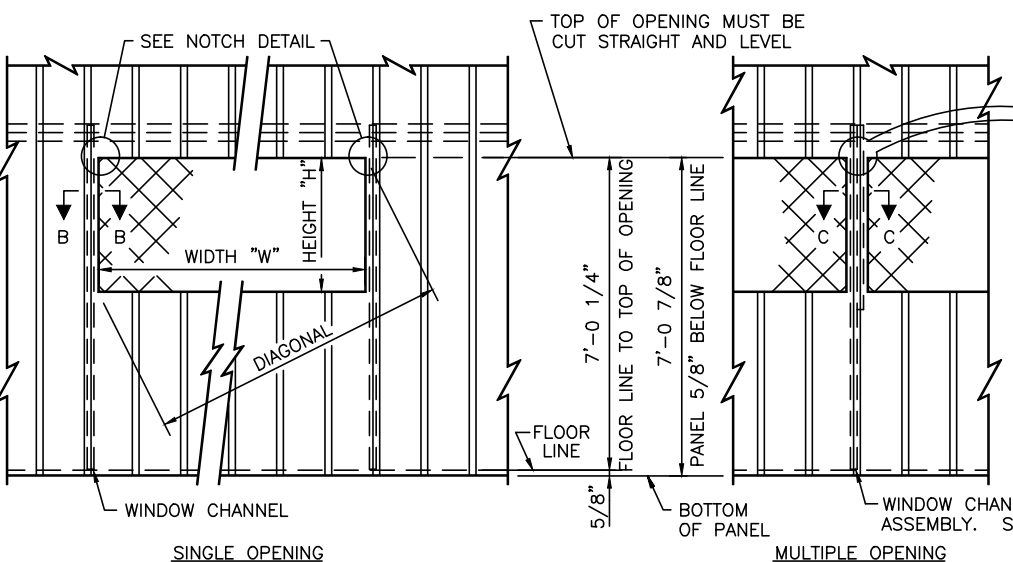


WINDOW CHANNEL INSTALLATION

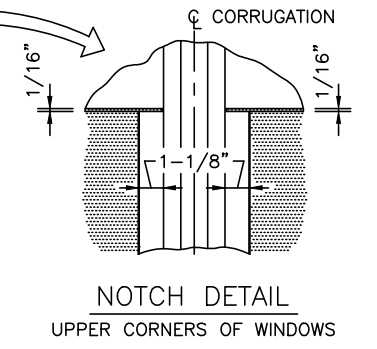


SECTION B-B

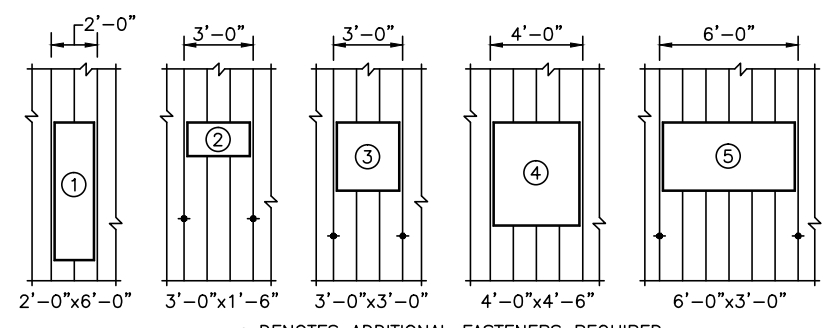
SECTION C-C



PANEL OPENING REQUIREMENTS

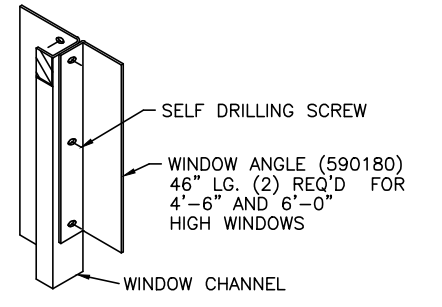


NOTCH DETAIL
UPPER CORNERS OF WINDOWS

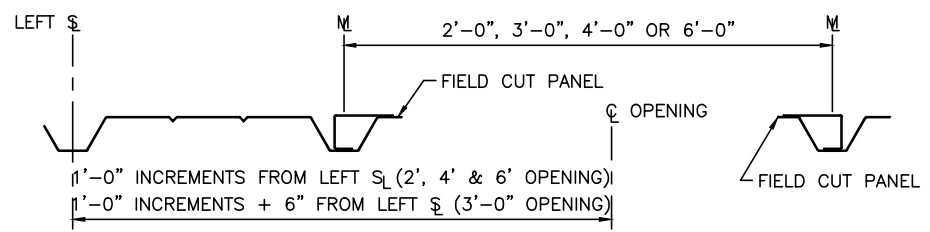


OPENING VARIATIONS

FOR MULTIPLE WINDOW INSTALLATION ATTACH WINDOW ANGLE TO CHANNEL (FLUSH AT TOP AND BACK SIDE) PRIOR TO INSTALLING WINDOW CHANNEL. USE (3) SELF DRILLING SCREWS (097230) PER WINDOW ANGLE.



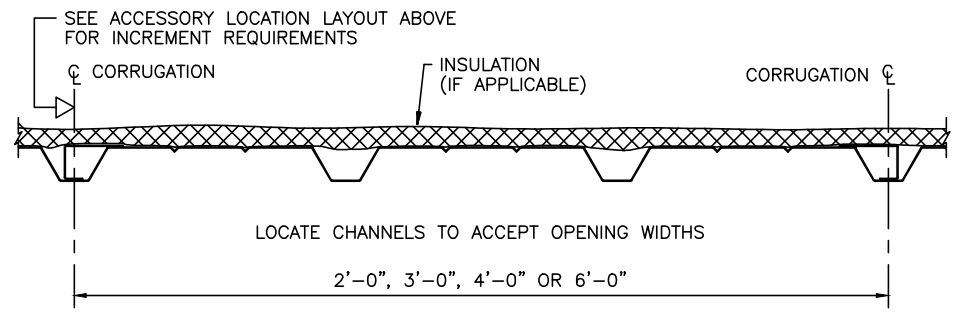
DETAIL D



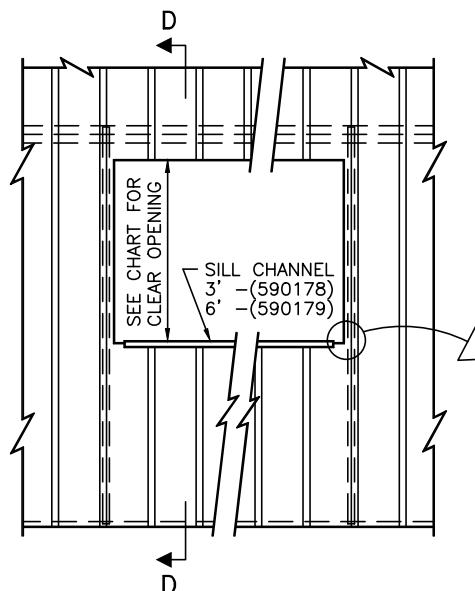
ACCESSORY LOCATION LAYOUT

OPENING NUMBER	OPENING SIZE (NOMINAL) WIDTH HEIGHT	CUTOUT SIZE *		DIAGONAL
		WIDTH "W"	HEIGHT "H"	
①	2'-0"x6'-0"	1'-7"	6'-0 7/8"	6'-3 5/16"
②	3'-0"x1'-6"	2'-7"	1'-6 7/8"	3'-0 5/16"
③	3'-0"x3'-0"	2'-7"	3'-0 7/8"	4'-0 3/16"
④	4'-0"x4'-6"	3'-7"	4'-6 7/8"	5'-9 3/4"
⑤	6'-0"x3'-0"	5'-7"	3'-0 7/8"	6'-4 1/2"

* CUTOUT DEVIATIONS FROM WIDTH AND HEIGHT DIMENSIONS SHOWN SHOULD NOT EXCEED PLUS OR MINUS 1/8".



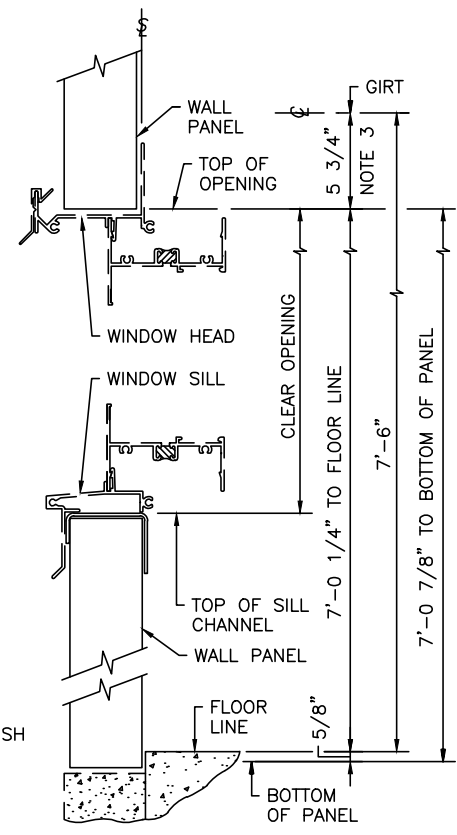
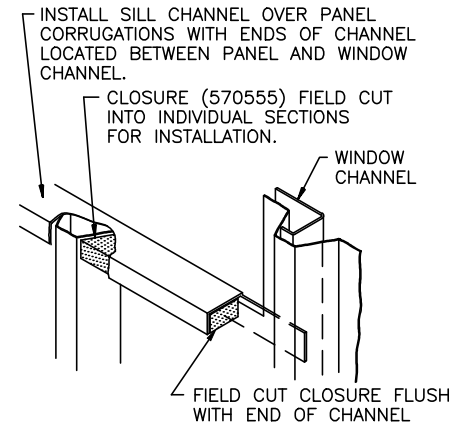
SECTION A-A



SILL CHANNEL INSTALLATION
FOR 2' AND 4' WIDE OPENINGS SILL CHANNEL MUST BE FIELD CUT TO LENGTH SEE DETAIL E.

SIZE	CLEAR OPENING
2' X 6'	6'-0 3/4"
3' X 1'-6"	1'-6 3/4"
3' X 3'	3'-0 3/4"
4' X 4'-6"	4'-6 3/4"
6' X 3'	3'-0 3/4"

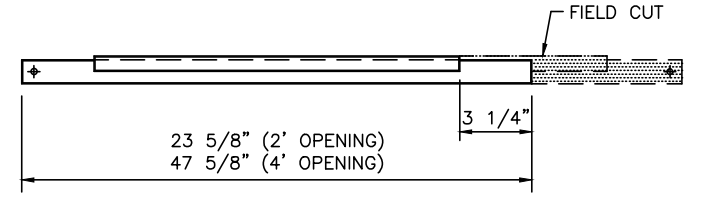
"CLEAR" VERTICAL HEIGHT DIMENSION FOR WINDOW INSTALLATION MUST NOT BE LESS THAN DIMENSIONS IN CHART.



SECTION D-D

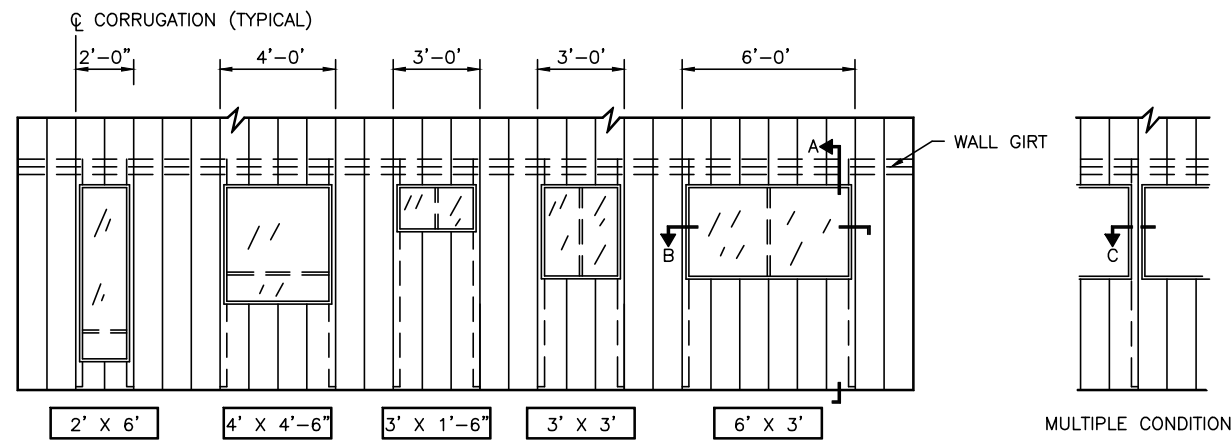
NOTES:

- ACCESSORIES ARE LOCATED BY VIEWING THE WALL FROM THE EXTERIOR OF THE BUILDING AND MEASURING FROM THE LEFT ξ (STRUCTURAL LINE) OR M (PANEL MODULE LINE) TO THE ζ (CENTERLINE) OF THE ACCESSORIES.
- ALLOW AT LEAST 1'-0" BETWEEN BUILDING STRUCTURAL MEMBERS (COLUMN, ENDWALL POST, ETC.) AND EDGE OF WALL ACCESSORY FOR WINDOW CHANNEL INSTALLATION.
- INSTALL PANELING ON WALL AREA, WITH INSULATION IN PLACE AS MAY BE REQUIRED.
ADD WINDOW CHANNELS AT THE PROPER LOCATION TO ACCOMMODATE THE REQUIRED FRAMED OPENING.
WALL MAY BE PANELLED IN ITS ENTIRETY, WITH WINDOW CHANNELS IN PLACE BEFORE CUTTING OPENING.
ALL WINDOW CLEAR OPENINGS ARE LOCATED WITH THE TOP OF OPENING CUTOUT AT 5 3/4" DOWN FROM THE 7'-6" GIRTS LOCATION, REGARDLESS OF WINDOW HEIGHT, TO PROVIDE A UNIFORM APPEARANCE FOR WALL ACCESSORIES.
- IN FIELD CUTTING OPENINGS INTO WALL, IT IS IMPORTANT THAT THE CUTOUT BE MADE AS ACCURATE AS POSSIBLE, WITH A STRAIGHT LEVEL CUT AT THE TOP EXPOSED LOCATION. IT IS SUGGESTED THAT NIBBLERS AND/OR RECIPROCATING SAW BE USED TO MAKE A SMOOTH STRAIGHT CUT.



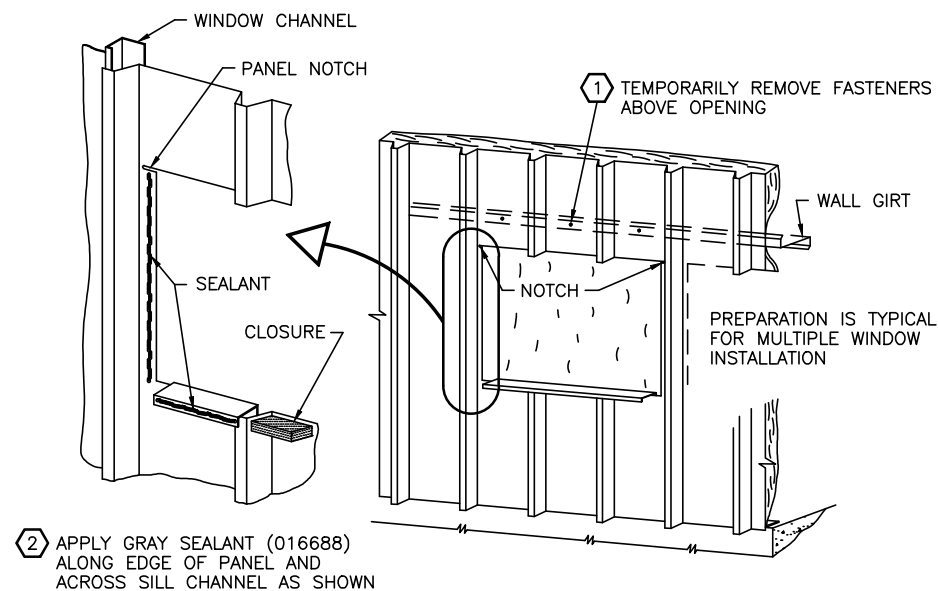
DETAIL - E

BUTLERIB II WINDOW PANEL CUTOUTS			
DRAWN BY	CHECKED BY	GROUP NUMBER: 27-028-01	
FIRST RELEASE DATE	REVISION DATE	B	P-081079 03
01/21/10	01/07/13		

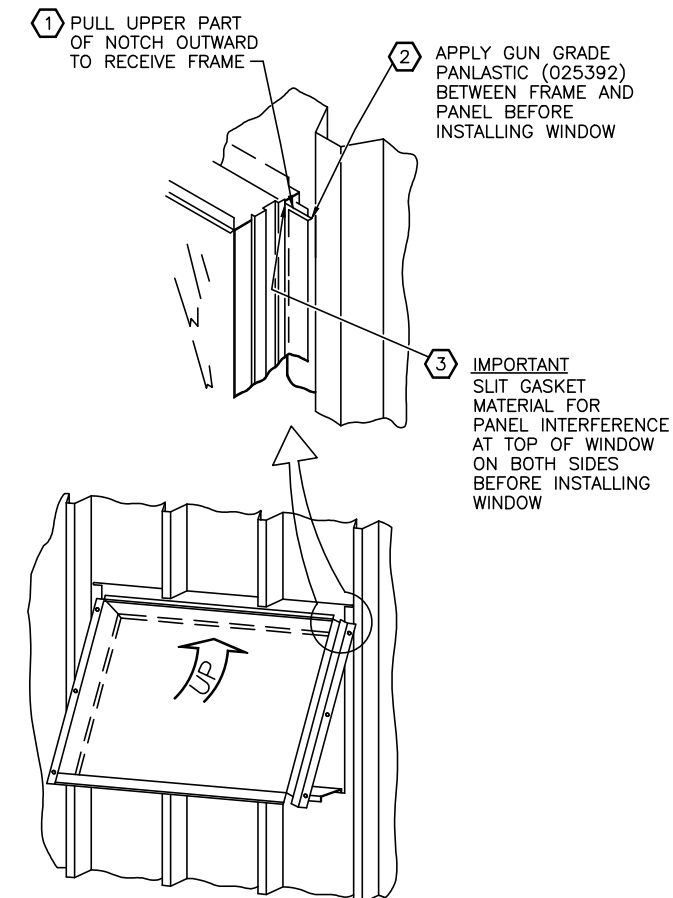


WINDOW VARIATIONS

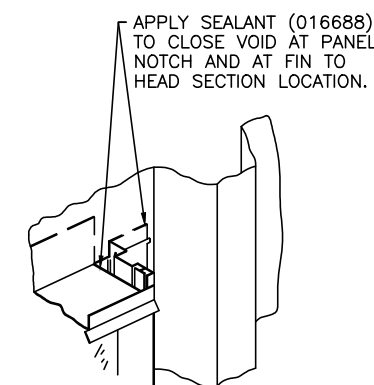
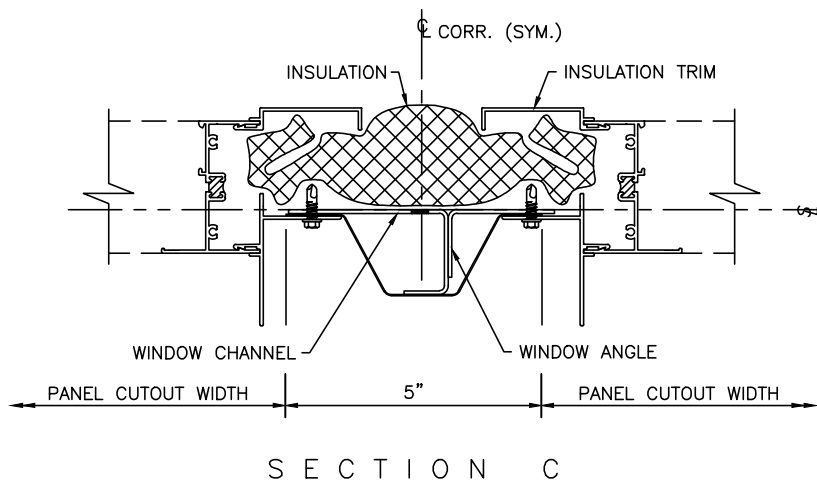
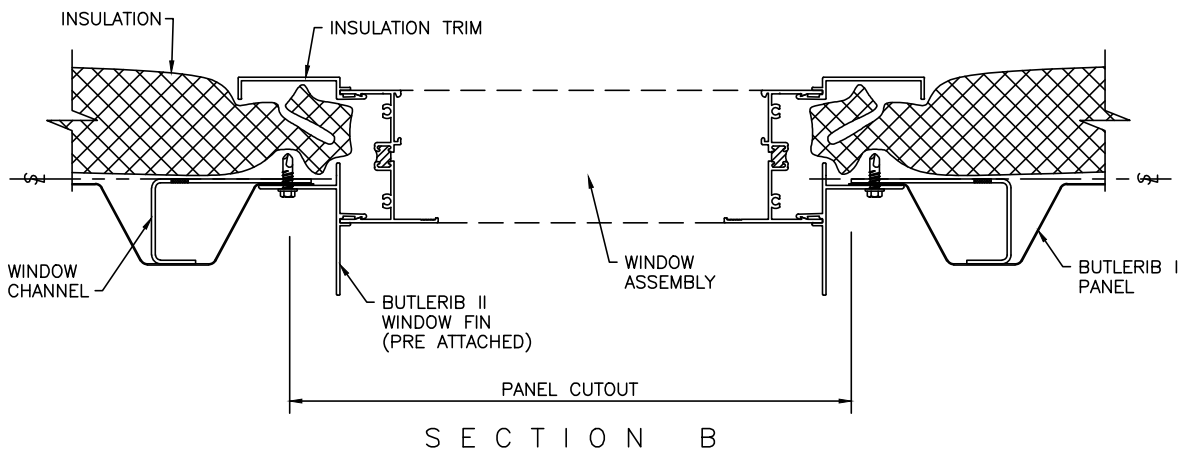
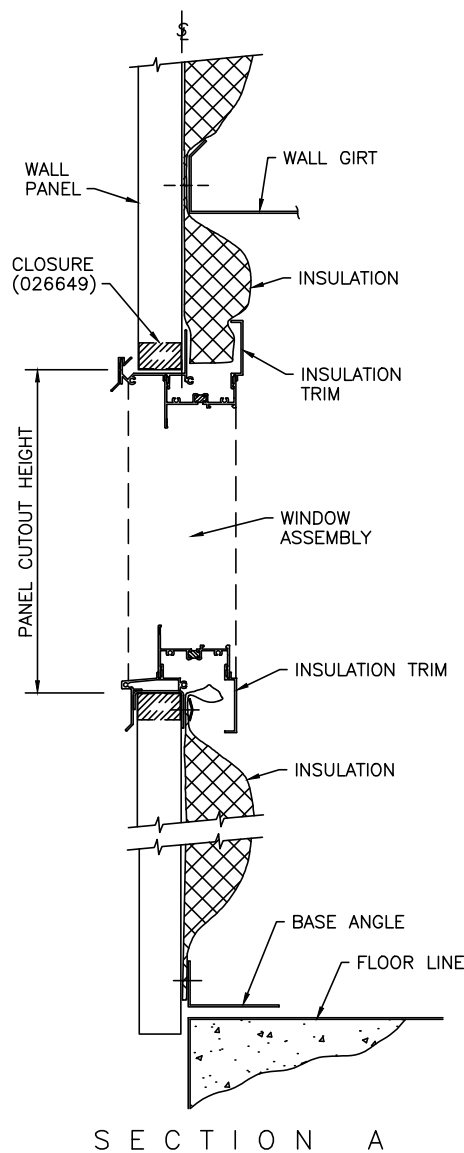
CAUTION: BACK OF WINDOWS PROJECT INTO BUILDING 2" FROM STRUCTURAL LINE. FLUSH COLUMNS SIT 1" FROM STRUCTURAL LINE.



STEP 1 OPENING PREPARATION

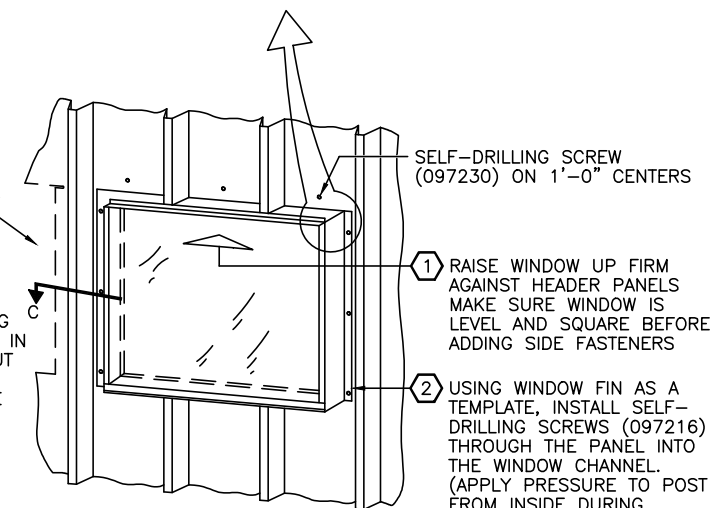


STEP 2 INSTALL WINDOW

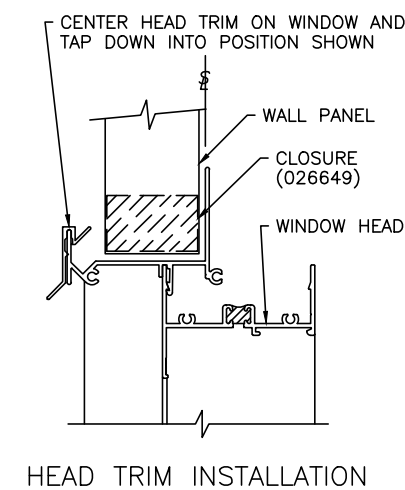


INSTALLATION PROCEDURE IS THE SAME FOR MULTIPLE WINDOWS. (SEE SECTION C)

4 WINDOW INSTALLATION SET WINDOW INTO OPENING WITH TOP OF WINDOW FIN IN PANEL NOTCHES. PULL OUT ON PANEL ABOVE WINDOW AND PUSH WINDOW FRAME UP AND INTO OPENING.



STEP 3 POSITION & FASTEN WINDOW



STEP 4

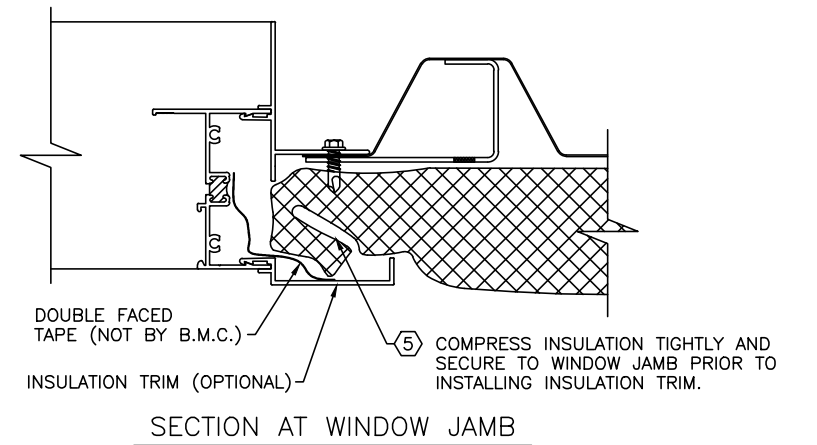
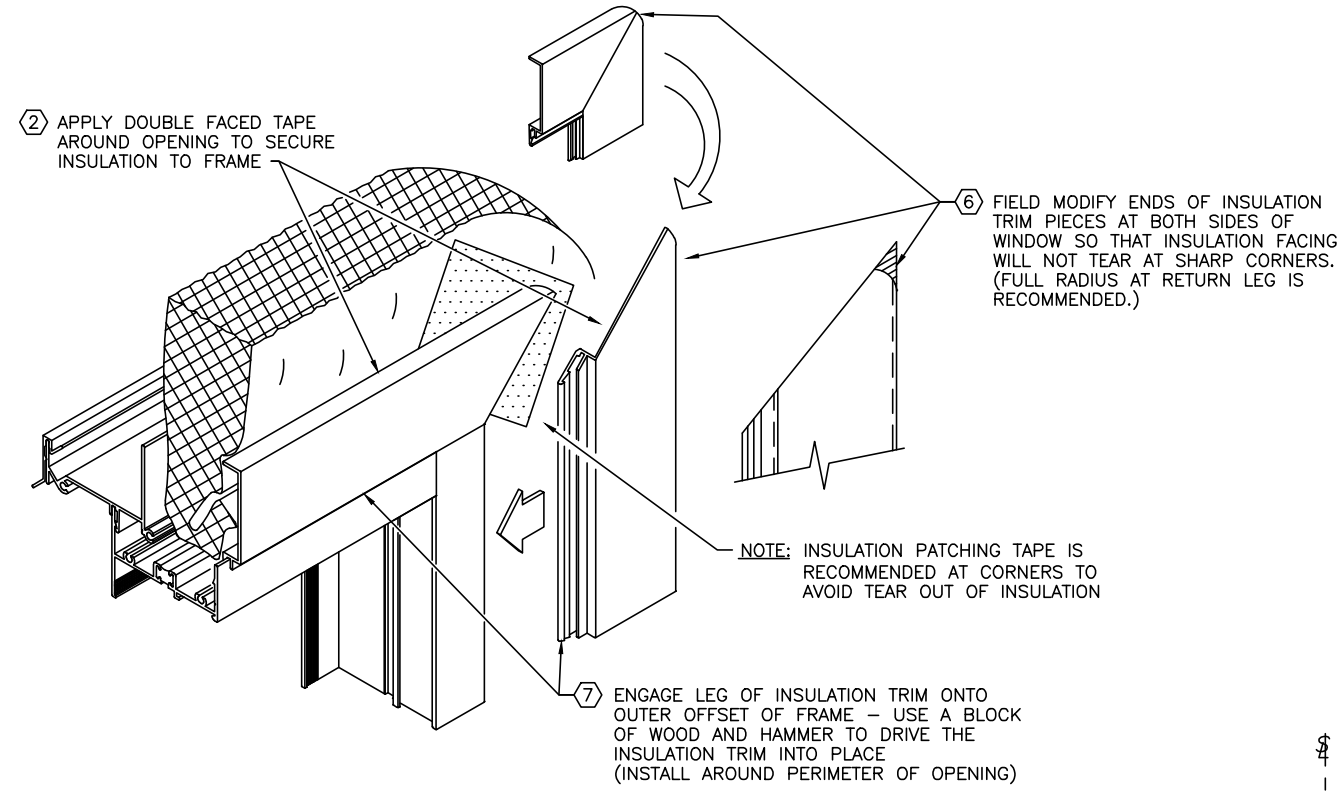
	WINDOW PART NUMBERS									
	PROJECTED WINDOWS			SLIDE WINDOWS			FIXED WINDOWS			
	2' X 6'	4' X 4'-6"	3' X 1'-6"	3' X 3'	6' X 3'	2' X 6'	3' X 1'-6"	4' X 4'-6"	6' X 3'	3' X 3'
WINDOW	590187	590188	590189	590190	590191	590205	590206	590208	590209	590207
HEAD TRIM *	590172	590173	590171	590171	590174	590172	590171	590173	590174	590171

* ONE PIECE OF HEAD TRIM IS INCLUDED IN EACH WINDOW PACKAGE

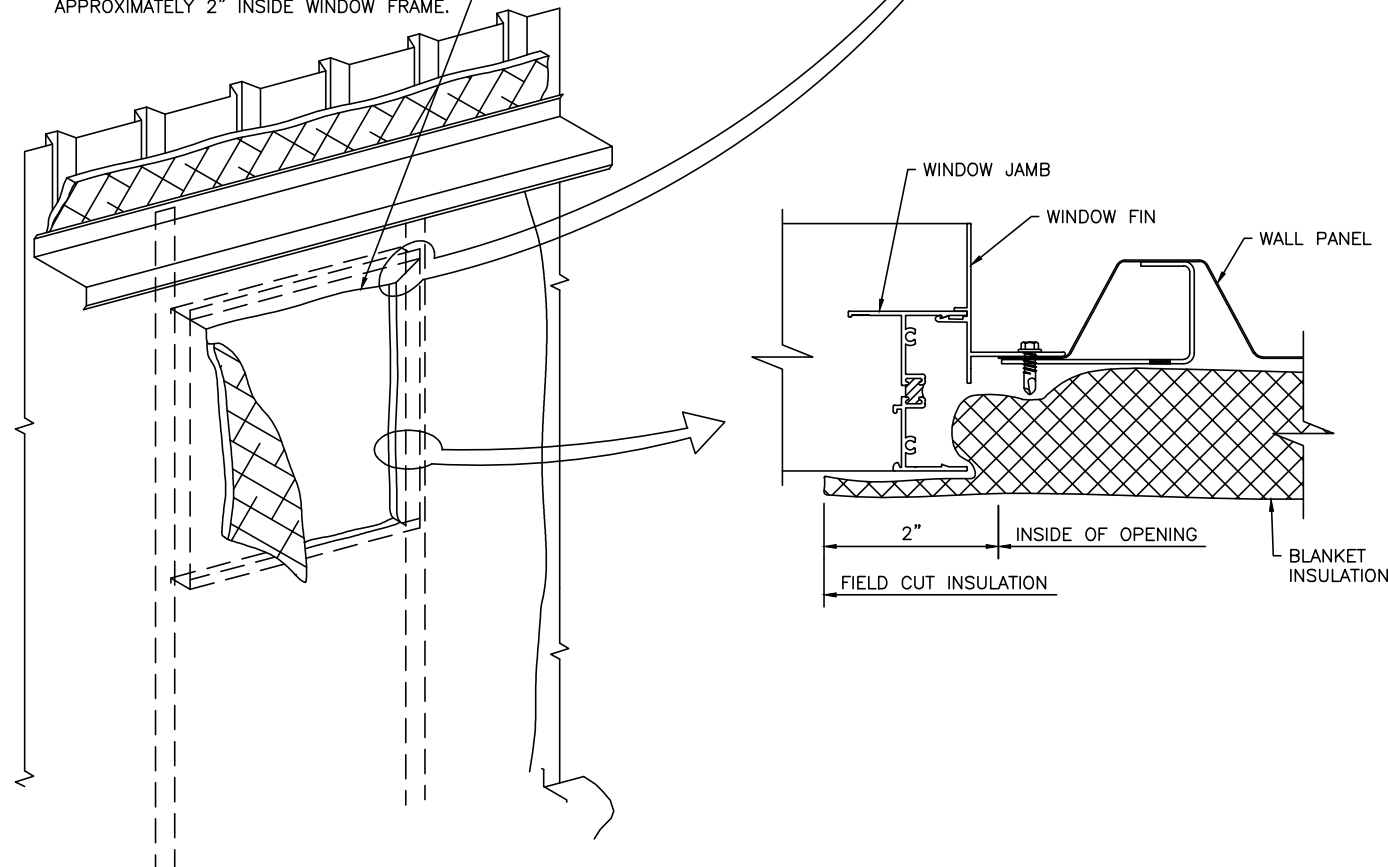
BUTLERIB II WINDOW INSTALLATION			
DRAWN BY	CHECKED BY	GROUP NUMBER: 27-028-01	
FIRST RELEASE DATE	REVISION DATE	B	P-081080 01
01/21/10	01/07/13		

INSULATION TRIM USAGE CHART	
WINDOW SIZE	PACKAGE NUMBER
3'-0" X 1'-6"	590143
2'-0" X 6'-0"	590144
4'-0" X 4'-6"	590145
6'-0" X 3'-0"	590146
3'-0" X 3'-0"	590181

NOTE: INSULATION TRIM PACKAGES ARE OPTIONAL. EACH PACKAGE CONTAINS (4) PIECES (2 JAMS, 1 HEAD AND 1 SILL PIECE).

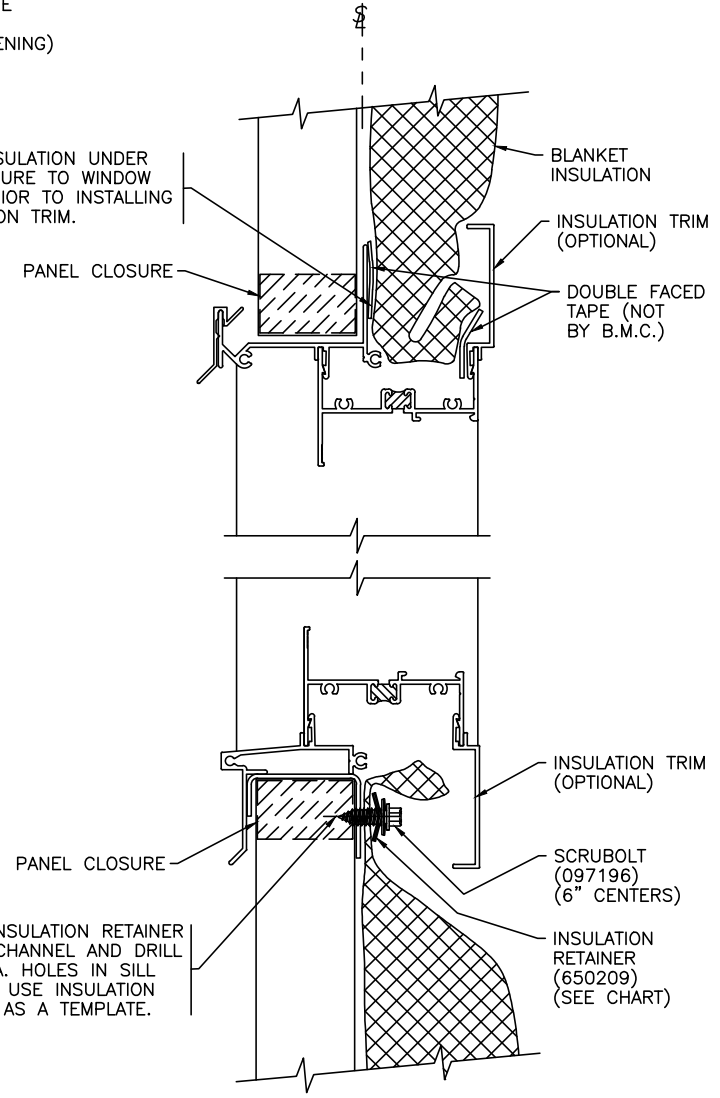


① CUT INSULATION OUT OF WINDOW OPENING APPROXIMATELY 2" INSIDE WINDOW FRAME.



④ FOLD INSULATION UNDER AND SECURE TO WINDOW HEAD PRIOR TO INSTALLING INSULATION TRIM.

③ CENTER INSULATION RETAINER ON SILL CHANNEL AND DRILL 5/16" DIA. HOLES IN SILL CHANNEL. USE INSULATION RETAINER AS A TEMPLATE.



INSULATION RETAINER USAGE CHART	
WINDOW SIZE	RETAINER (650209) 3'-2" LONG
2'-0" X 6'-0"	USE 1 PIECE-CUT TO 1'-8"
3'-0" X 1'-6"	USE 1 PIECE-CUT TO 2'-8"
3'-0" X 3'-0"	USE 1 PIECE-CUT TO 2'-8"
4'-0" X 4'-6"	USE 1 FULL PIECE
6'-0" X 3'-0"	USE 2 PIECES CUT (1) PIECE TO 2'-6"

① DENOTES ERECTION SEQUENCE

VERTICAL SECTION THRU WINDOW HEAD AND SILL

BUTLERIB II WINDOW INSULATION AND CLOSURES			
DRAWN BY	CHECKED BY	GROUP NUMBER: 27-028-01	
FIRST RELEASE DATE	REVISION DATE	B	P-081081 02
01/21/10	01/07/13		