

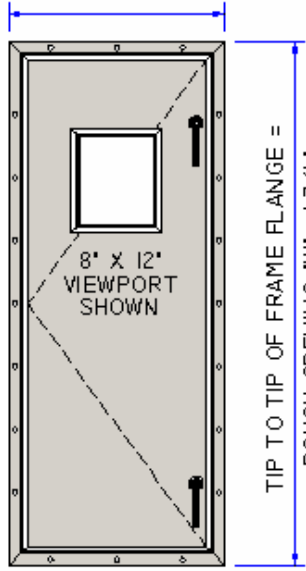
WINTTECH

ACCESS DOORS

AD4200 4" Non-Thermal Submittal Form

Specification of Materials Used

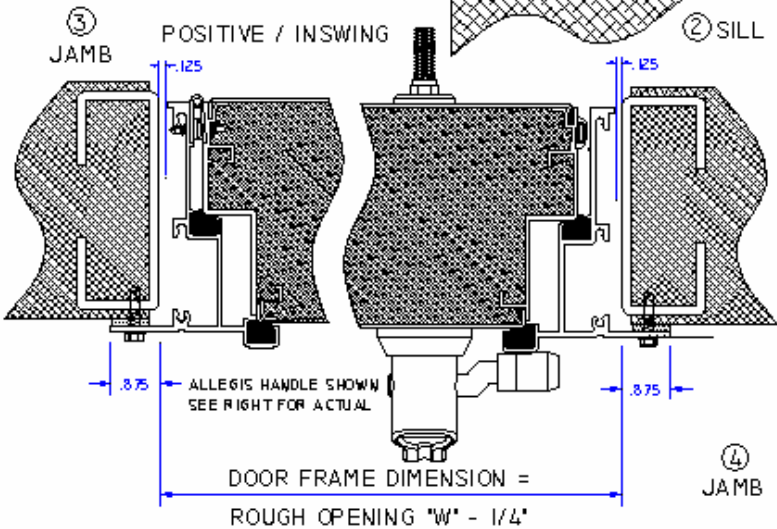
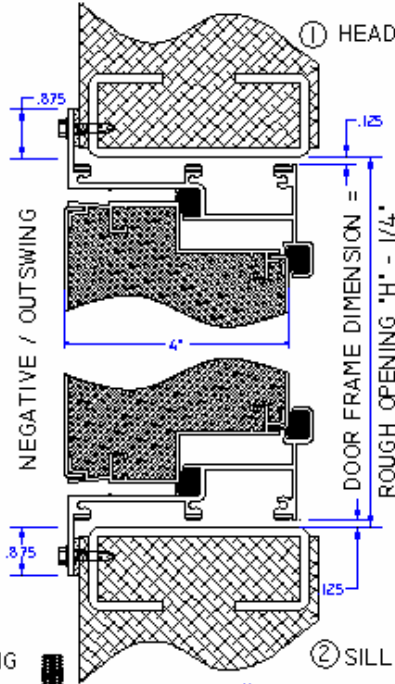
TIP TO TIP OF FRAME FLANGE =
ROUGH OPENING "W" + 1-3/4"



VIEWED FROM EXTERIOR

AD4200

NEGATIVE / OUTSWING
SHOWN AT HEAD AND SILL,
POSITIVE / INSWING SHOWN
AT JAMBS



Note and Special Instructions

- ~ Unless otherwise noted, all doors are as viewed from exterior.
- ~ Unless otherwise noted, all doors are dimensioned 1/4" less than clear or rough opening.
- ~ Hinges are opposite latching hardware, unless a plug door or fixed access panel has been supplied.
- ~ Allegis Handles shown on drawings, refer to Latching Handle section for project specific hardware.
- ~ Negative (Outswing) Head and Sill detailed. Positive (Inswing) Jambs detailed.
- ~ Refer to WinTech Installation Manual for door mounting, maintenance, and cleaning.
- ~ Details are not to scale.

Door Construction – 45° degree mitered corners with screw spline assembly:

- Negative (Outswing)
- Positive (Inswing)

Aluminum Extrusions – Aluminum made of 6063-T5 with minimum wall thickness .094.

Double Gasket Door (2g) – Two (2) 1/2" Ø Extruded Santoprene® Thermoplastic Vulcanizate continuous rods with single seam located at jamb.

Foam Door Insulation – Made from BASF AUTOFROTH® 2 part Expandable Polyurethane Foam. Density of 2.40 lbs/f³, and thermal properties of K = 1.90; R_{Foam Only} = 21.0.

Door Panel Skins:

Interior Skin:

Exterior Skin:

Hinge/s - #304 Stainless Steel Piano Hinge:

- 10" Hinges
- Continuous Hinges
- No Hinges
- (Multiple Hinges)
- (Single Hinge)

Latching Handles:

View Port Glass (if applicable):

- View Port
- No View Port
- 8" x 8"
- 8" x 12"
- 12" x 12" (*Viewing Size*)

Other: _____
Make up: _____

Customer Information:

Project:
Customer:
Engineer:
Contractor: