

# WINTeCH

## ACCESS DOORS

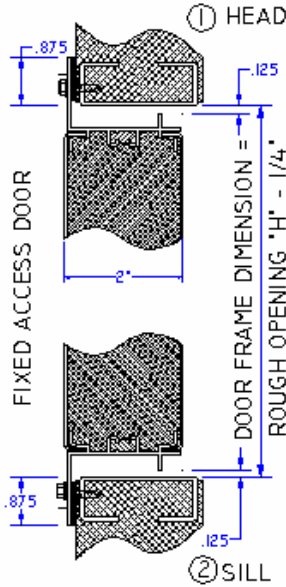
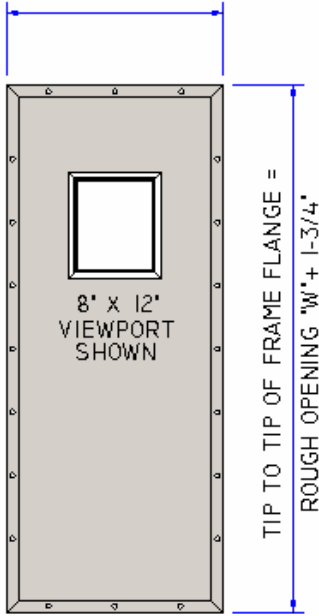
# AD2000T 2" Thermal Fixed Access Door Submittal Form

### Specification of Materials Used

TIP TO TIP OF FRAME FLANGE =  
ROUGH OPENING "W" + 1-3/4"

AD2000T  
FIXED ACCESS DOOR

**Door Construction** – 45° degree mitered corners with screw spline assembly:



**Aluminum Extrusions** – Aluminum made of 6063-T5 with minimum wall thickness .060.

**Thermal Break** – Consists of BASF ELASTOCAST® ISOCYANATE 2 part thermal Pour and Debridge.

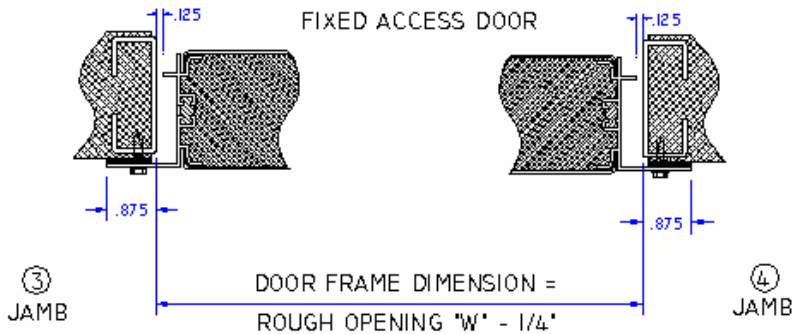
**Foam Door Insulation** – Made from BASF AUTOFROTH® 2 part Expandable Polyurethane Foam. Density of 2.40 lbs/ft<sup>3</sup>, and thermal properties of K = 1.90; R Foam Only = 10.5.

VIEWED FROM EXTERIOR

### Door Panel Skins:

Interior Skin:

Exterior Skin:



### View Port Glass (if applicable):

- View Port
- 8" x 8"     8" x 12"     12" x 12" (*Viewing Size*)
- Other: \_\_\_\_\_
- Make up: \_\_\_\_\_

### Note and Special Instructions

- ~ Unless otherwise noted, all doors are as viewed from exterior.
- ~ Unless otherwise noted, all doors are dimensioned 1/4" less than clear or rough opening.
- ~ Refer to WinTech Installation Manual for door mounting, maintenance, and cleaning.
- ~ Details are not to scale.

### Customer Information:

<b>Project:</b>
<b>Customer:</b>
<b>Engineer:</b>
<b>Contractor:</b>