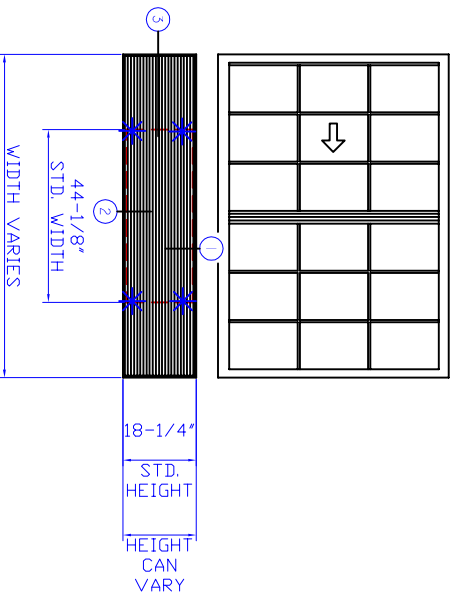
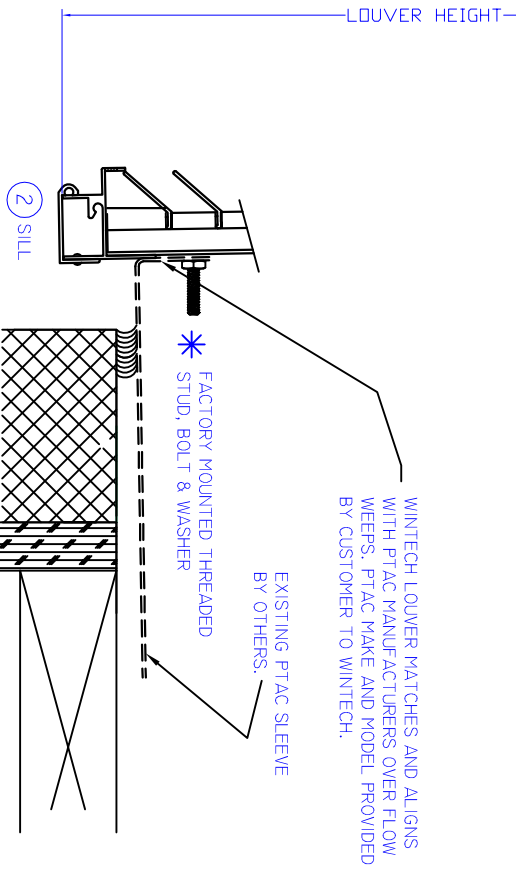
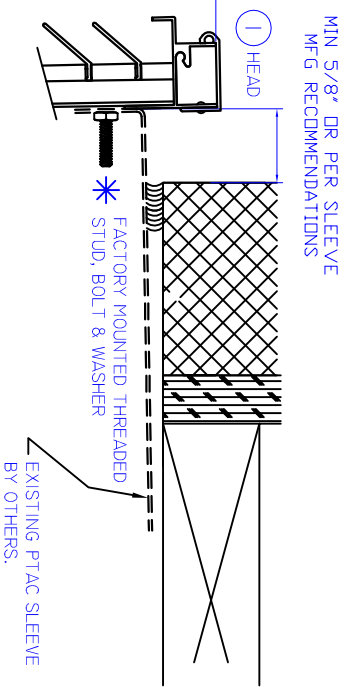
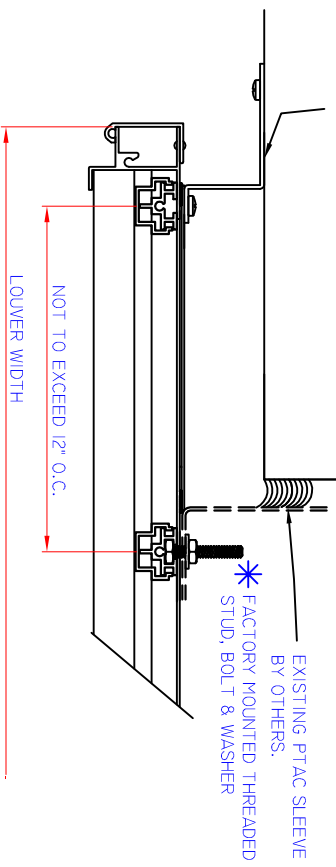


WINTTECH

H210 HANG-ON PTAC LOUVER



LOUVERS > THAN 66" WIDTH SHALL REQUIRE ADDITIONAL ANCHORAGE TO WALL STRUCTURE AT THIS POINT. DUE TO VARYING OFFSET DIMENSIONS AND MULTIPLE SUBSTRATE OPTIONS, FINAL ATTACHMENT AND DESIGN ARE UP TO INSTALLER. ANCHOR CLIPS, ANCHORS, OR ANY MATERIALS OR LABOR ARE NOT PROVIDED BY OR DESIGNED BY WINTTECH. DETAIL PROVIDED IS FOR VISUAL CONCEPT ONLY AND NOT FINAL DESIGN FOR ATTACHMENT.



WINTTECH STANDARD HANG-ON PTAC LOUVER

- STANDARD SIZE: 44-¹/₈" X 18-¹/₄" TO MATCH STANDARD 42" X 16" SLEEVE
- PREPPED PER PTAC MFG - PROVIDE INFO.
- MUST PROVIDE DRAIN INFORMATION - INTERIOR OR EXTERIOR.
- SINGLE SKIN SIDE BLANK OUTS PROVIDED ON SIZES LARGER THAN 42" X 16".
- SIZES LARGER THAN 66" WILL NEED ADDITIONAL ATTACHMENTS (N.B.W.) NOT BY WINTTECH. (SEE DETAIL 3)
- SIZES LARGER THAN 44-¹/₈" X 18-¹/₄", PTAC IS ASSUMED CENTERED HORIZONTALLY UNLESS OTHERWISE NOTED.