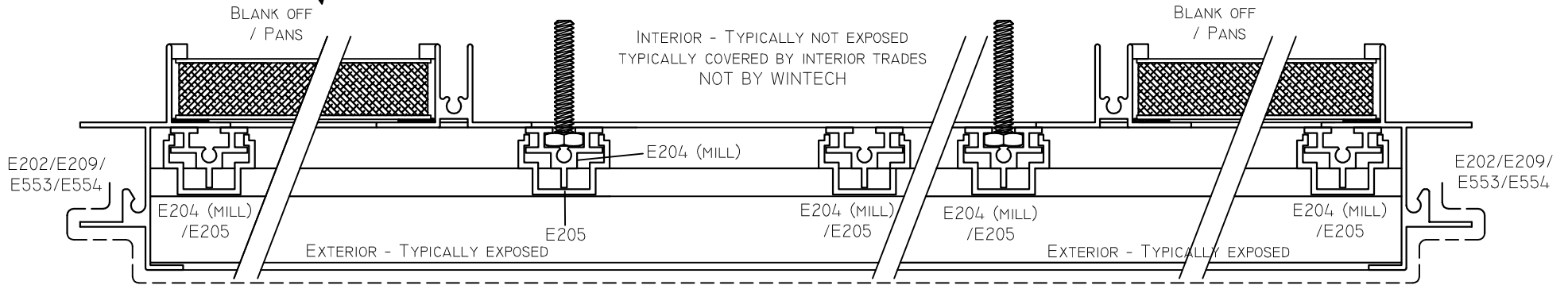


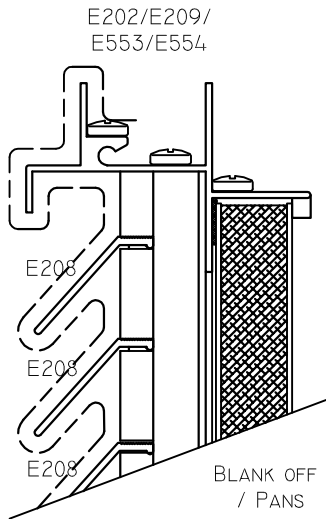
# WİNTECH

## WİNTECH LOUVER FINISH STANDARDS H200 / H210 / H220 / H2001



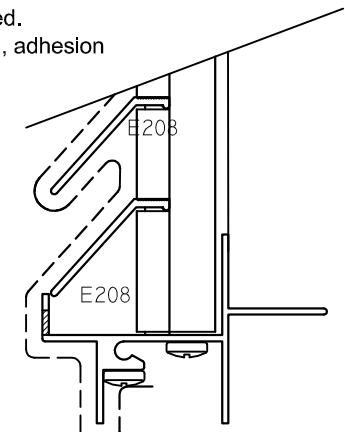
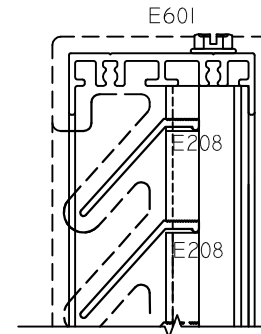
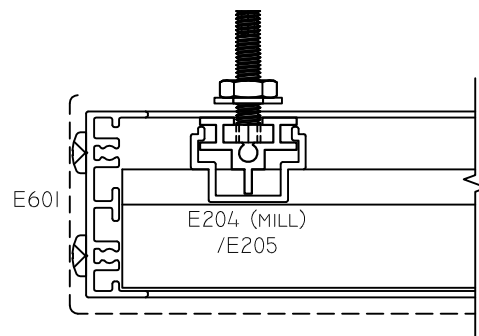
### JOB FINISH GUIDE FOR FRAMES AND BLANK OFFS

- 1) Clear Anodize: Frame Anodized and skins mill finish. E202/E209/E553/E554/E205/E203/E208/E601.- Clear Anodized.
- 2) Colored Anodize (dark, champagne, black): Paint both pans with closest color on hand note: SHADE ONLY no mill, adhesion test and no repaints for flaws. E202/E209/E553/E554/E205/E203/E208/E601 - Colored Anodized.
- 3) Painted Louvers: Pans are painted installed along with louver but SHADE ONLY. E202/E209/E553/E554/E205/E203/E208/E601 - Painted to match..
- 4) E204 Strut Backer is always Mill finish, but may have over spray from paint if job is painted.
- 5) Corner and strut gaskets are black - Assembly screws are mill unless painted from overspray on painted projects.



### SPECIAL NOTE AT QUOTE / ORDER TIME

Typical PTAC application is that the interior of the PTAC unit is framed out and finished by other interior trades Not By WinTech (NBW). If PTAC is not framed out, WinTech must be notified at time of order for interior finishing. Standard finishing follows guidelines above.



E202/E209/  
E553/E554

--- = FINISHED LOCATIONS  
PER GUIDELINES