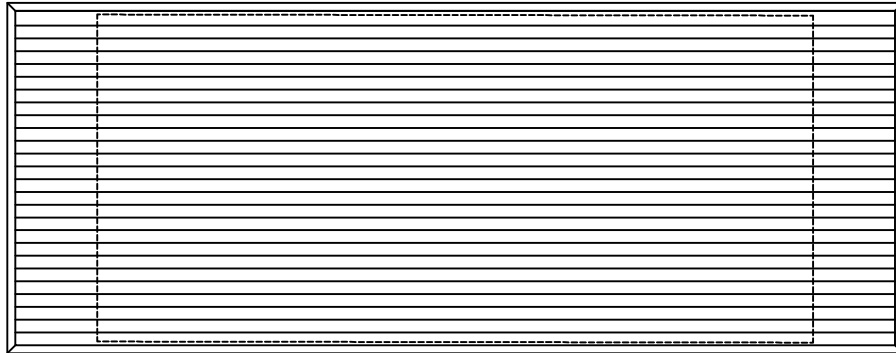




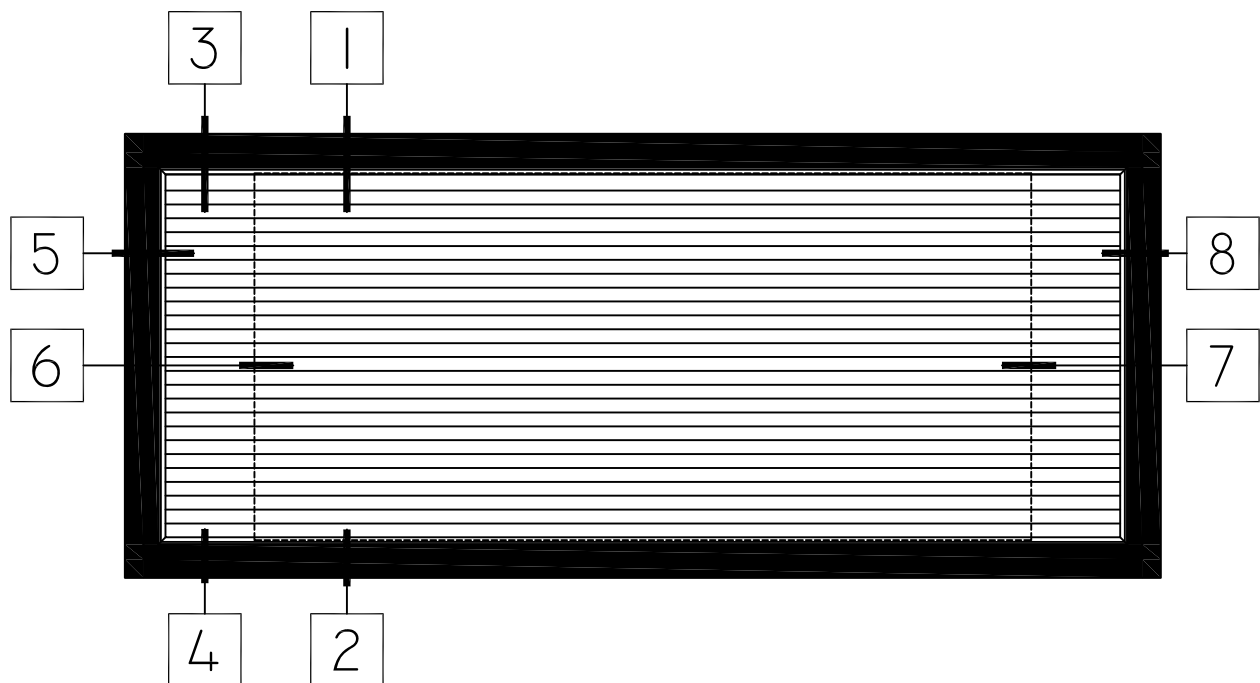
P.O. BOX 480
MONETT, MO 65708-0480

P: 417-235-7821
F: 417-737-7140
www.wintechinc.com

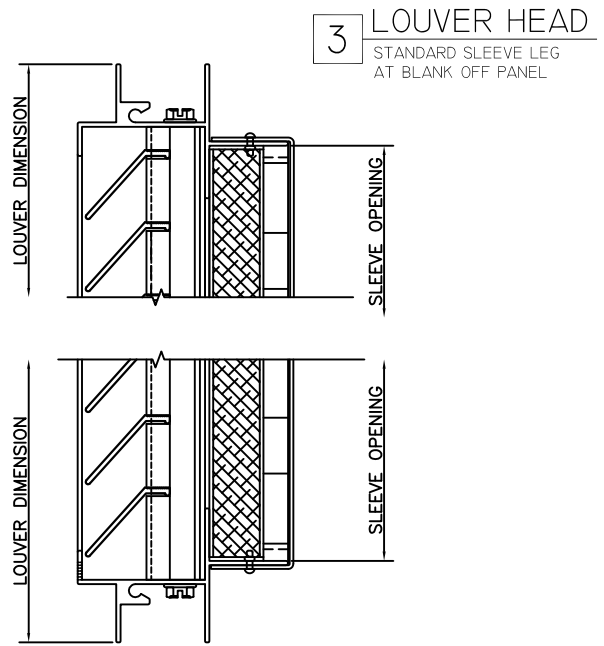
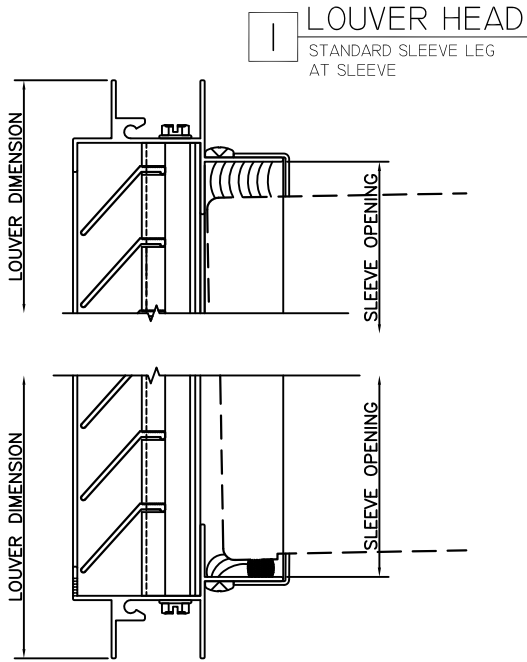


**H200I IMPACT LOUVER (O.G.) PERFORMANCE DATA:
ASTM E330, ASTM 1886, ASTM 1996**

Rating	± 75 DP
Impact Rating	Level D (2 impacts)
Florida Approval #	15029
Free Air %	68%
NFPA 90 Rating	Class C (Class A available)
Structural Performance	112.50 psf
Thermally Broken	No
Frame Depth	1" Glazing Pocket
"R" Value	1.2 of Insulated Panel
Screen Option	Bird/Insect



HALF SCALE DETAILS

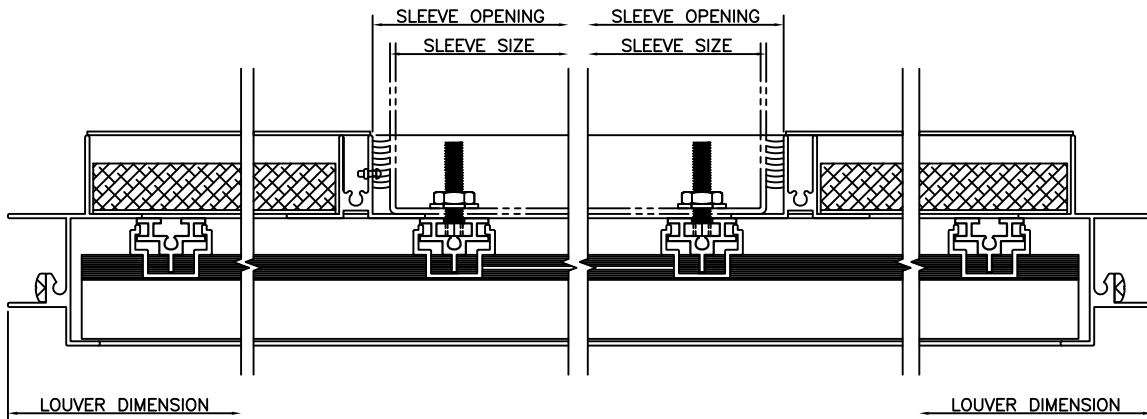


5 LOUVER JAMB
 STANDARD SLEEVE LEG

6 LOUVER STRUT

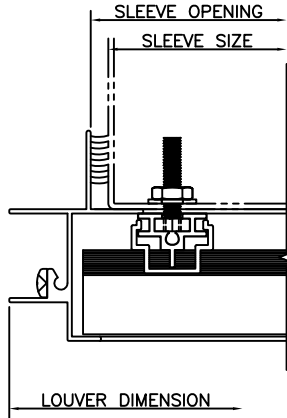
7 LOUVER STRUT

8 LOUVER JAMB
 STANDARD SLEEVE LEG

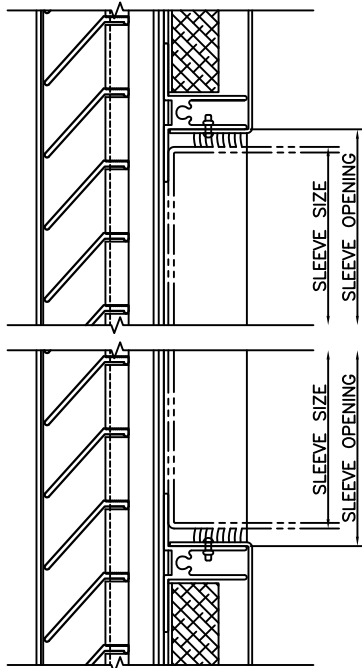
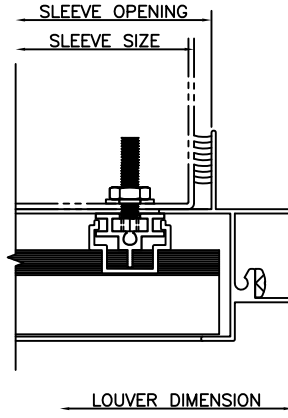


HALF SCALE DETAILS

9 LOUVER JAMB
STANDARD SLEEVE LEG
NO BLANK OFF



10 LOUVER JAMB
STANDARD SLEEVE LEG
NO BLANK OFF



11 LOUVER MTG RAIL
WITH BLANK OFF PANEL ABOVE

12 LOUVER MTG RAIL
WITH BLANK OFF PANEL BELOW

HALF SCALE DETAILS