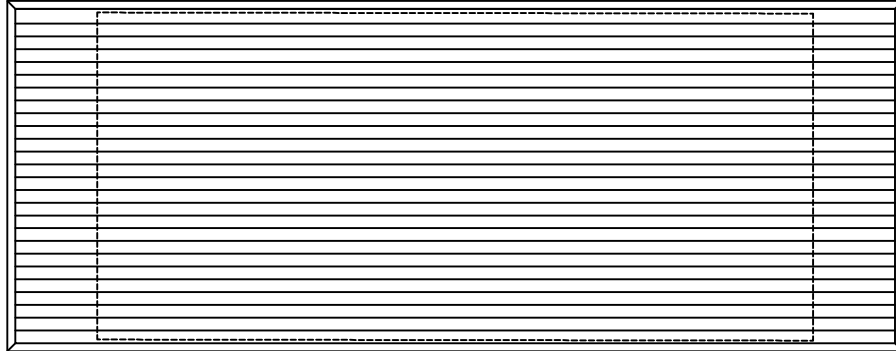




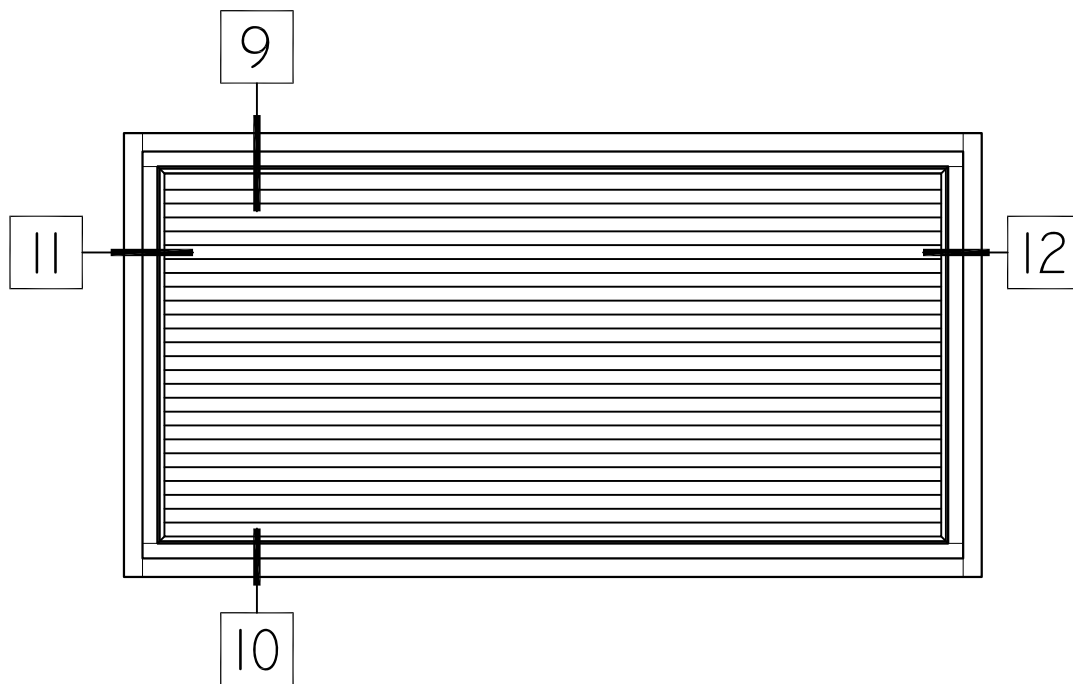
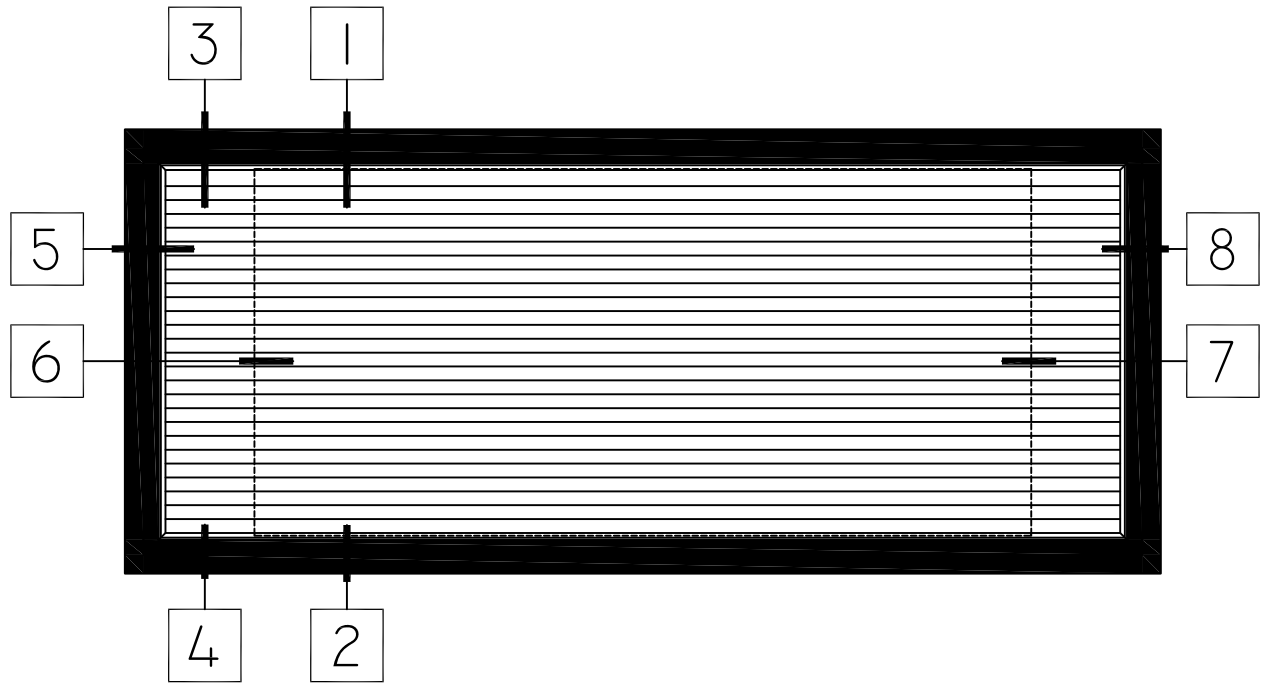
P.O. BOX 480  
MONETT, MO 65708-0480

P: 417-235-7821  
F: 417-737-7140  
www.wintechinc.com



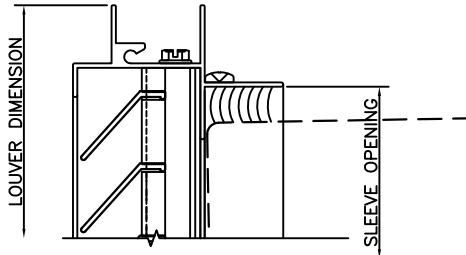
## H200 / H220 LOUVER (O.G.) PERFORMANCE DATA: ASTM E330 & TAS 202

<b>Rating</b>	<b>± 75 DP</b>
<b>Free Air %</b>	<b>68%</b>
<b>NFPA 90 Rating</b>	<b>Class C (Class A available)</b>
<b>Structural Performance</b>	<b>112.0 psf</b>
<b>Thermally Broken</b>	<b>No</b>
<b>Frame Depth</b>	<b>1" Glazing Pocket</b>
<b>"R" Value</b>	<b>1.2 of Insulated Panel</b>
<b>Screen Option</b>	<b>Bird/Insect</b>

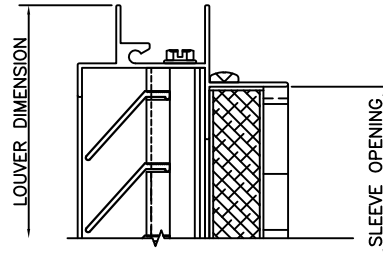


HALF SCALE DETAILS

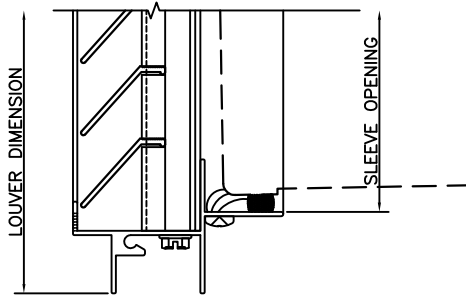
1 LOUVER HEAD  
 STANDARD SLEEVE LEG



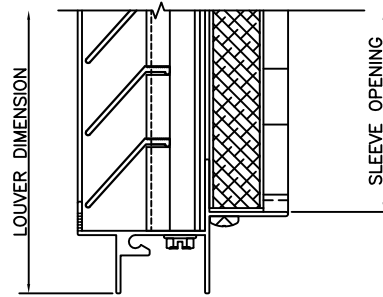
3 LOUVER HEAD  
 STANDARD SLEEVE LEG



2 LOUVER SILL  
 STANDARD SLEEVE LEG



4 LOUVER SILL  
 STANDARD SLEEVE LEG

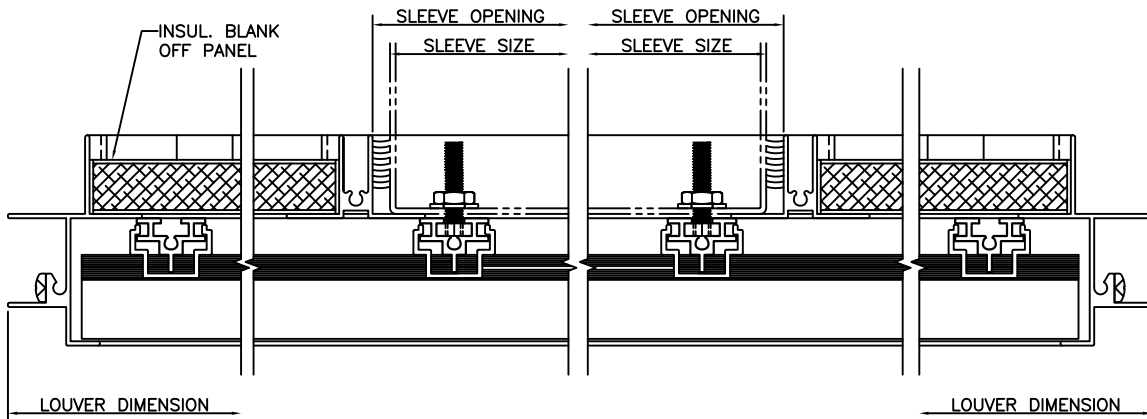


5 LOUVER JAMB  
 STANDARD SLEEVE LEG

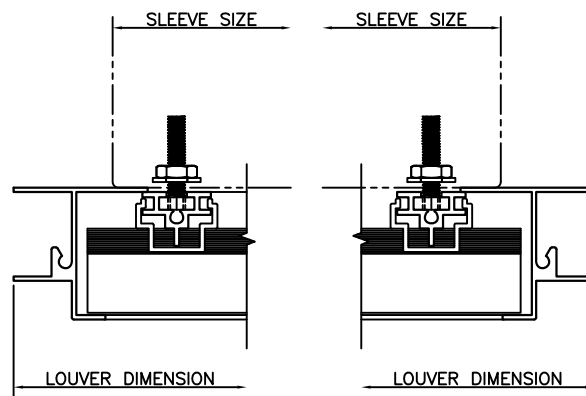
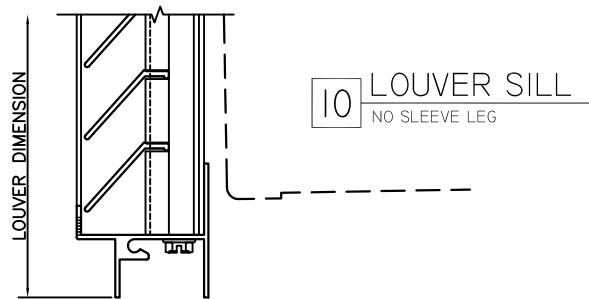
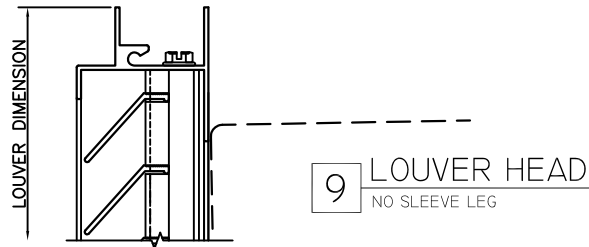
6 LOUVER STRUT  
 STANDARD SLEEVE LEG

7 LOUVER STRUT  
 STANDARD SLEEVE LEG

8 LOUVER JAMB  
 STANDARD SLEEVE LEG



HALF SCALE DETAILS



HALF SCALE DETAILS