

**3250 FRONT SET FIXED PERFORMANCE DATA:
AAMA/WDMA/CSA 101/I.S.2/A440-08
AAMA/WDMA/CSA 101/I.S.2/A440-11**

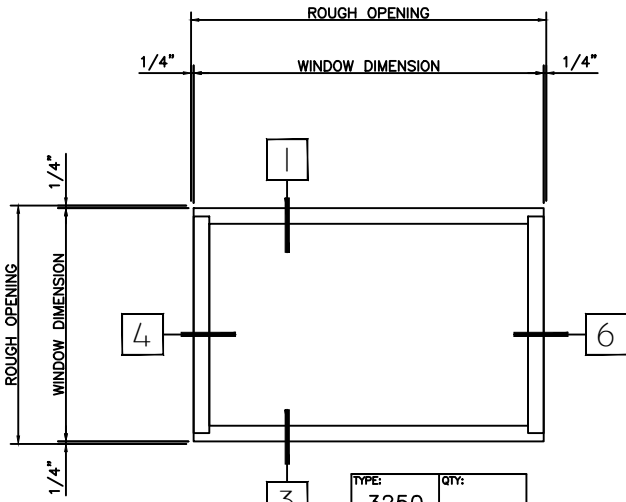
Rating	*CW-PG50-FW
Air Infiltration	<0.01 cfm/ft @ 1.57 psf
Water Resistance	**0 leakage at 7.5 lb
Structural Performance	+/- 75.19 psf
Thermally Broken	Yes
Frame Depth	3-1/4"
Infill Options	Maximum 1"
*Optional Performance	CW-PG65-HS
** Optional Water	0 leakage at 10.0 lb

WINTTECH

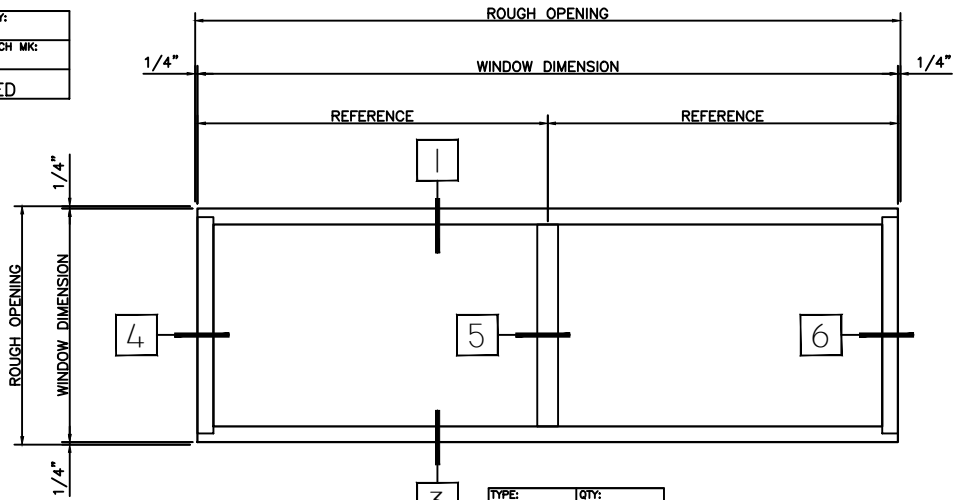
P.O. BOX 480
MONETT, MO 65708-0480

P: 417-235-7821
F: 417-737-7140
www.wintechinc.com

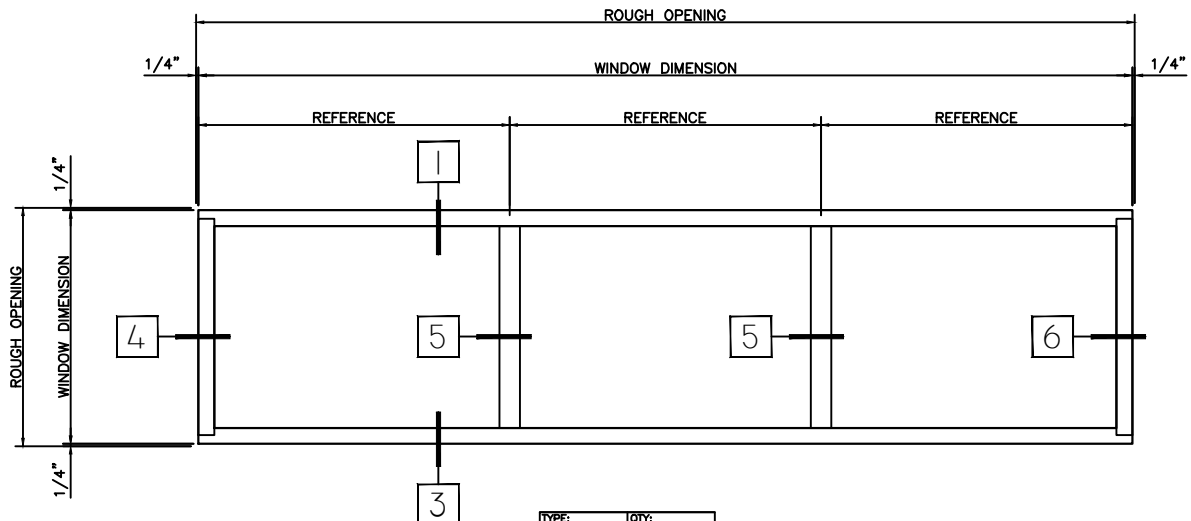
3250 FIXED (FRONT SET)



TYPE:	QTY:
3250	
ARCH MK:	
PRODUCT:	FIXED



TYPE:	QTY:
3250	
ARCH MK:	
PRODUCT:	FIXED-FIXED



TYPE:	QTY:
3250	
ARCH MK:	
PRODUCT:	FXD-FXD-FXD

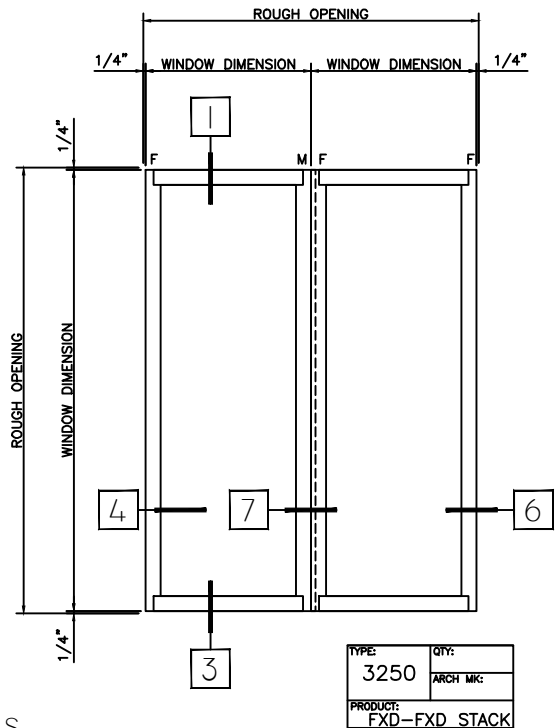
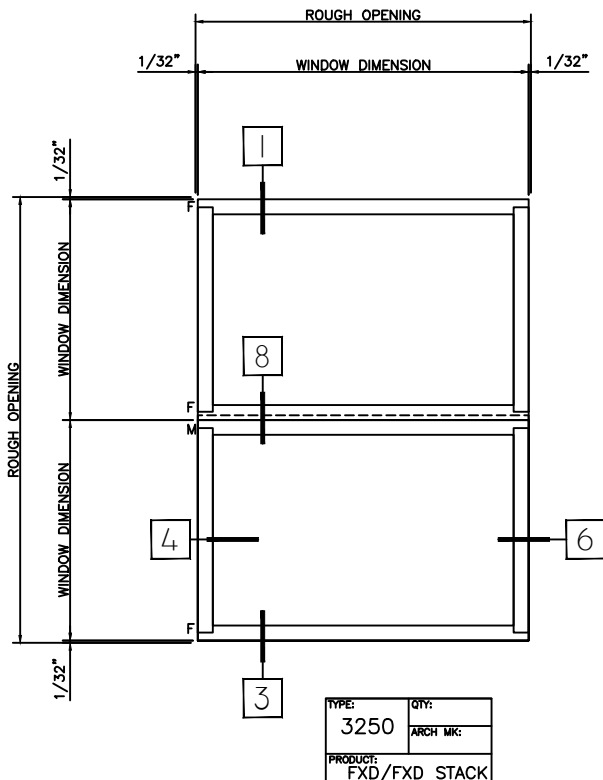
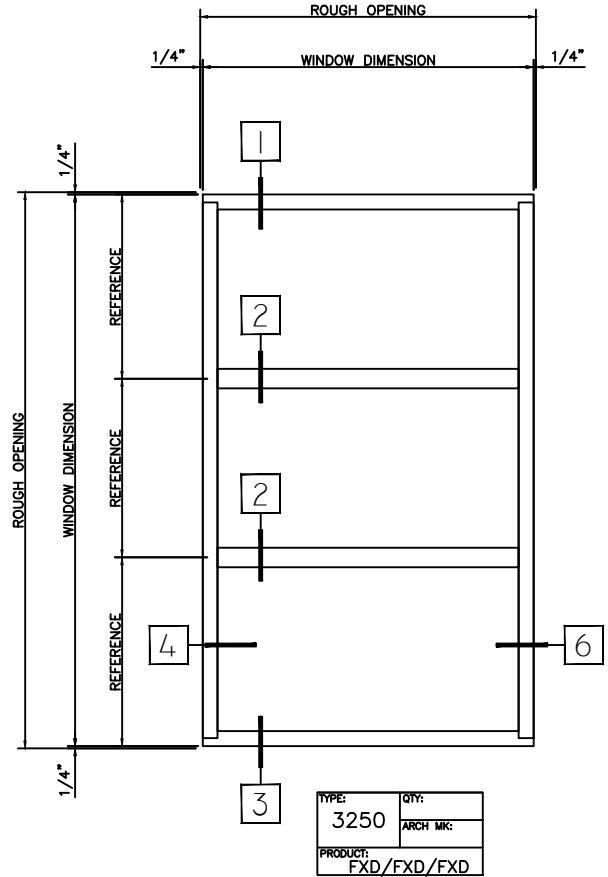
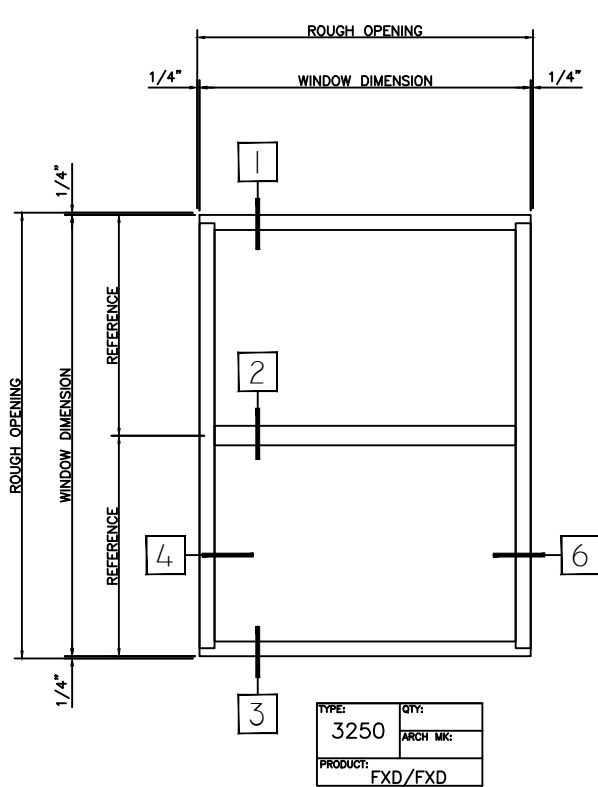
HALF SCALE DETAILS

WINTeCH

P.O. BOX 480
MONETT, MO 65708-0480

P: 417-235-7821
F: 417-737-7140
www.wintechinc.com

3250 FIXED (FRONT SET)



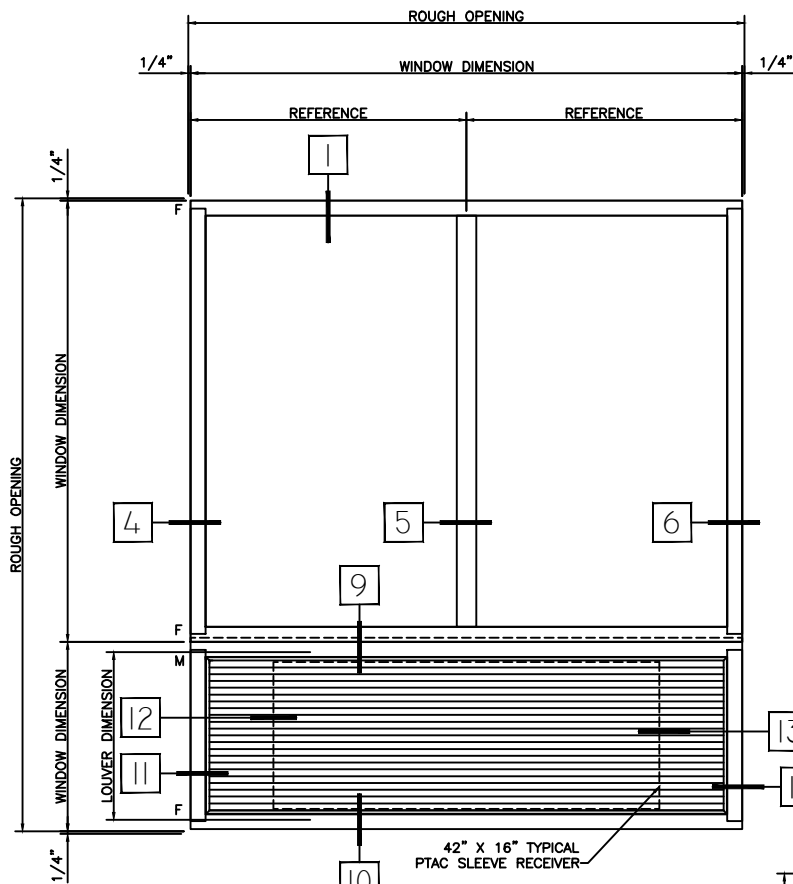
HALF SCALE DETAILS

WINTech

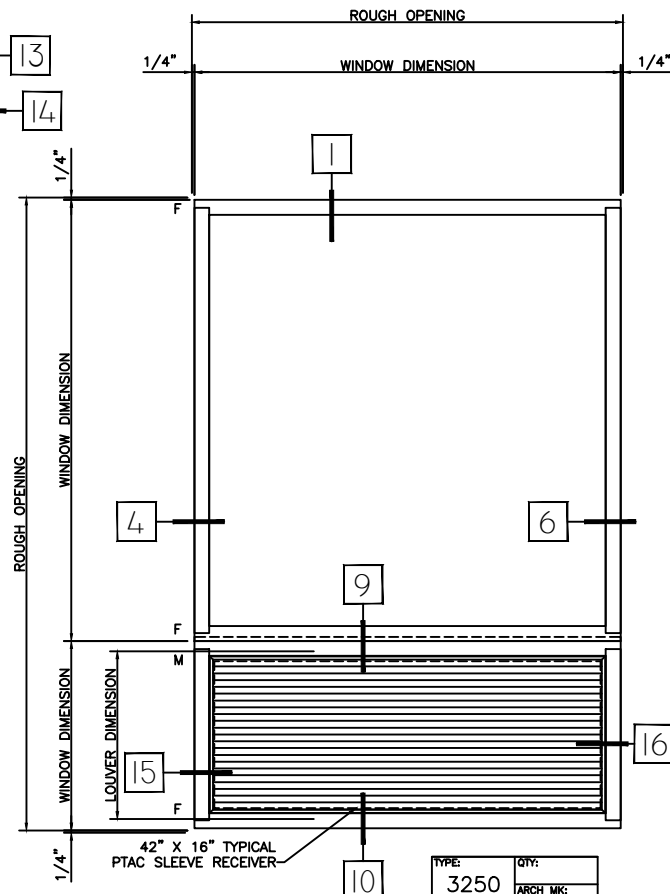
3250 FIXED (FRONT SET)

P.O. BOX 480
MONETT, MO 65708-0480

P: 417-235-7821
F: 417-737-7140
www.wintechinc.com



TYPE:	QTY:
3250	
PRODUCT:	ARCH MK:
FXD-FXD	
FXD PTAC LOUVER	



TYPE:	QTY:
3250	
PRODUCT:	ARCH MK:
FXD	
FXD PTAC LOUVER	

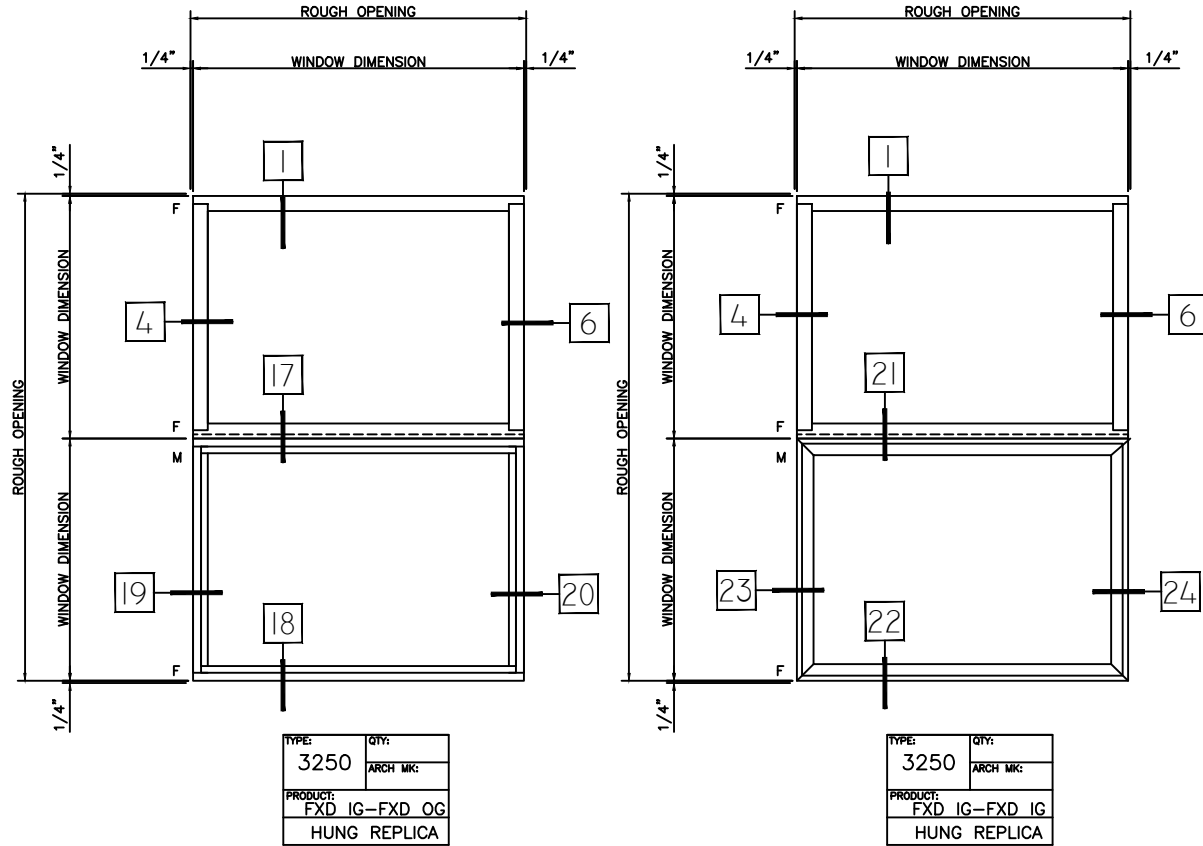
HALF SCALE DETAILS

WINTeCH

P.O. BOX 480
MONETT, MO 65708-0480

P: 417-235-7821
F: 417-737-7140
www.wintechinc.com

3250 FIXED (FRONT SET)



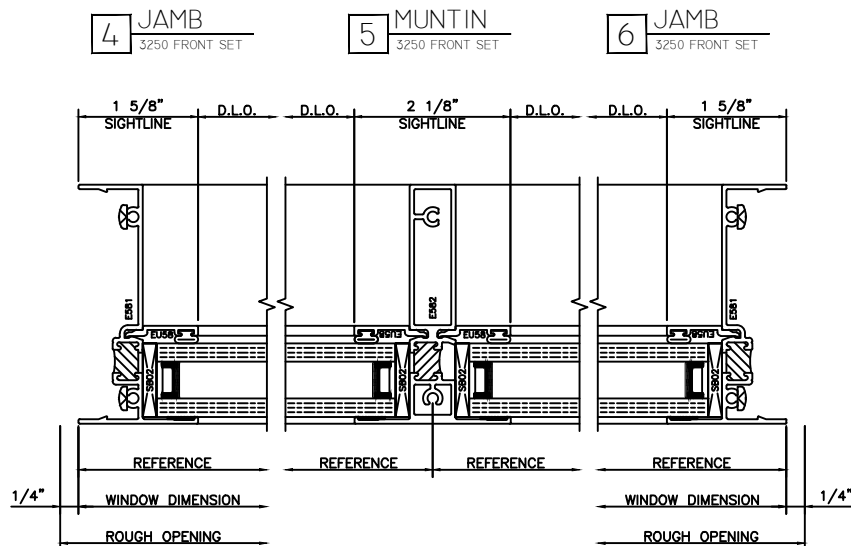
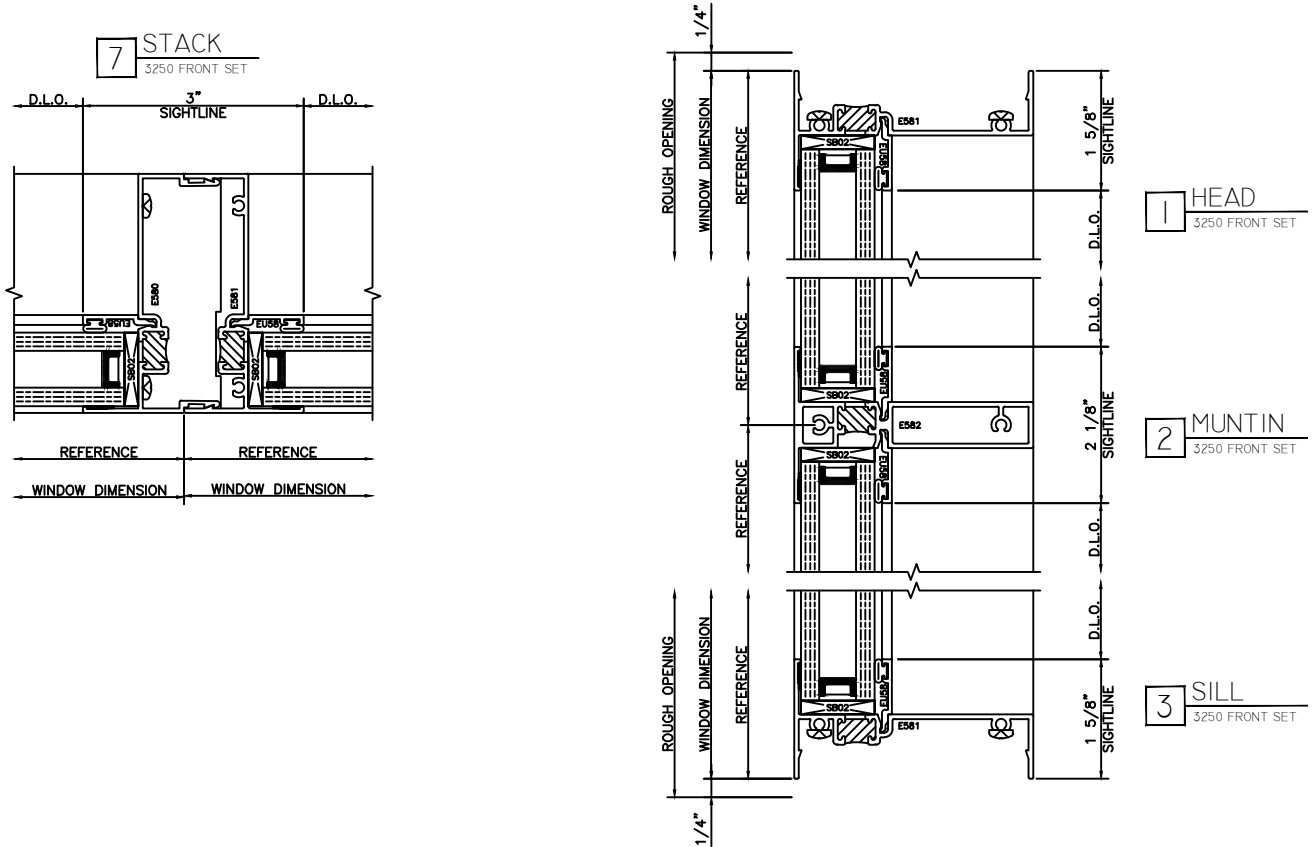
HALF SCALE DETAILS

WINTeCH

P.O. BOX 480
MONETT, MO 65708-0480

P: 417-235-7821
F: 417-737-7140
www.wintechinc.com

3250 FIXED (FRONT SET)



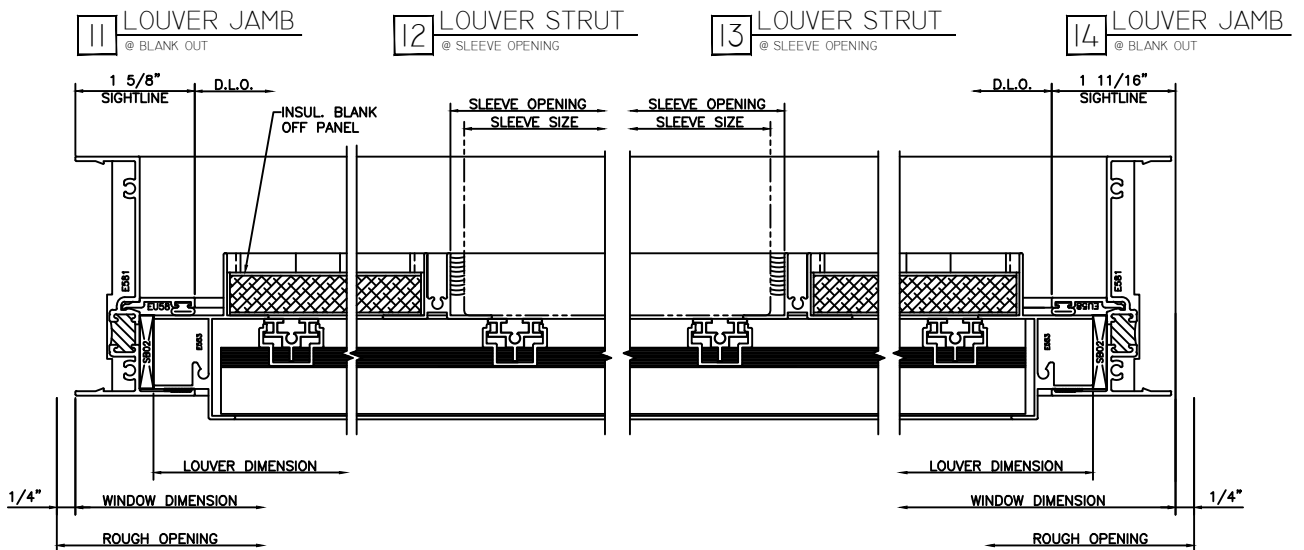
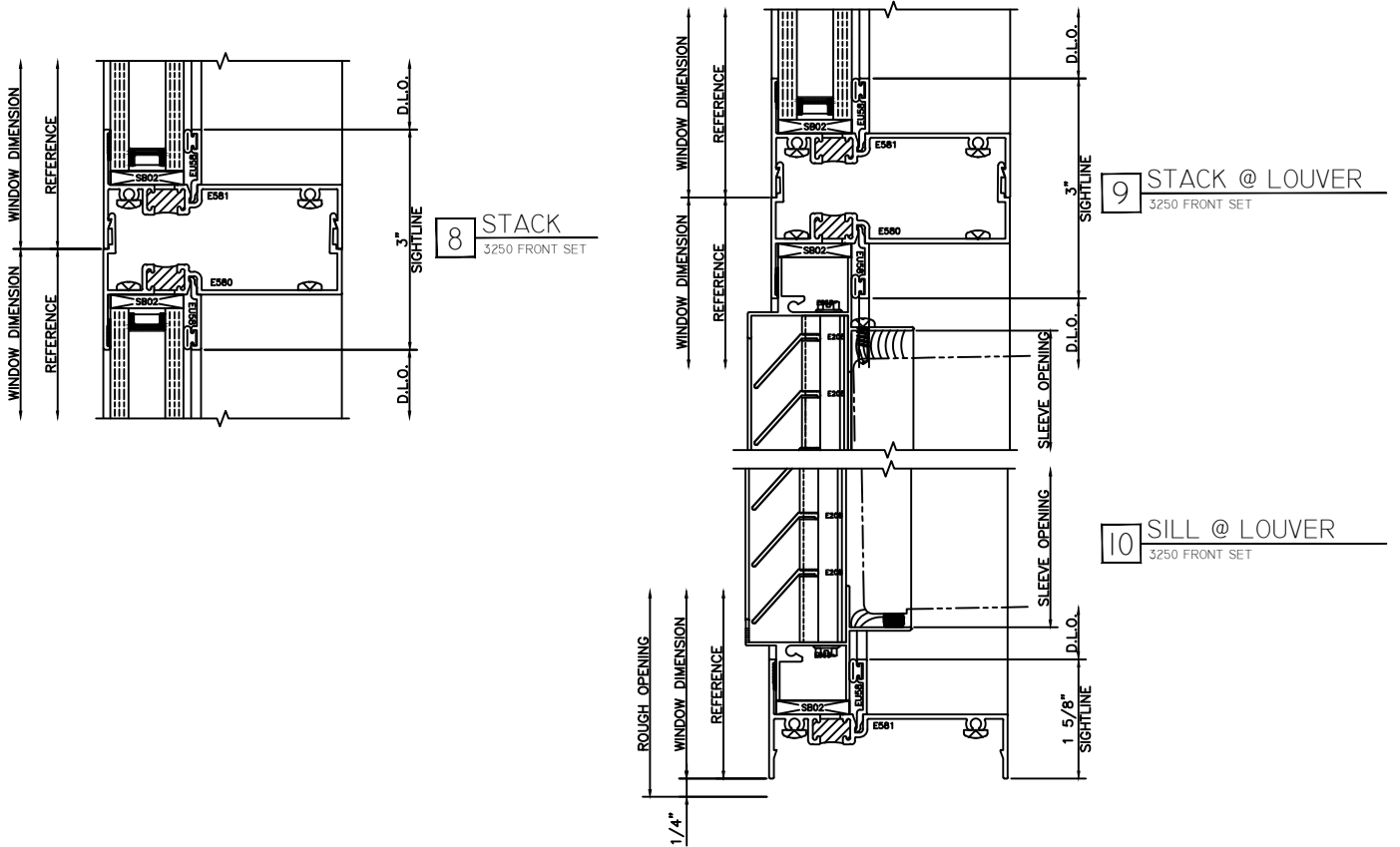
HALF SCALE DETAILS

WINTeCH

P.O. BOX 480
MONETT, MO 65708-0480

P: 417-235-7821
F: 417-737-7140
www.wintechinc.com

3250 FIXED (FRONT SET)



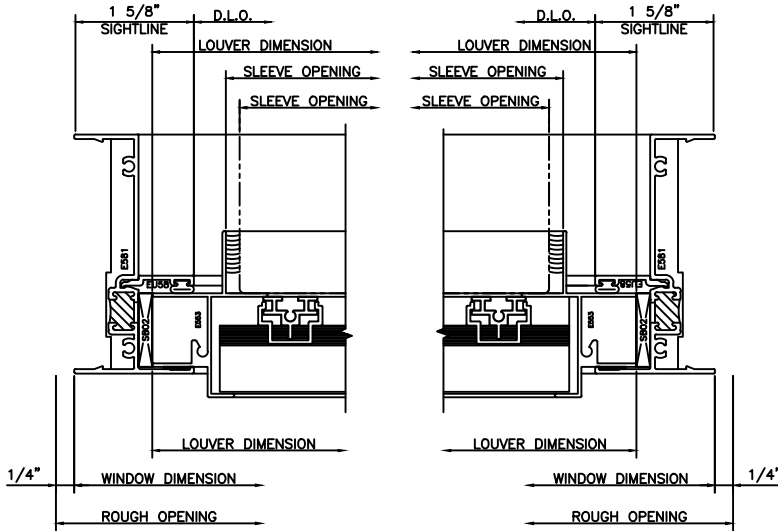
HALF SCALE DETAILS

WINTeCH

P.O. BOX 480
MONETT, MO 65708-0480

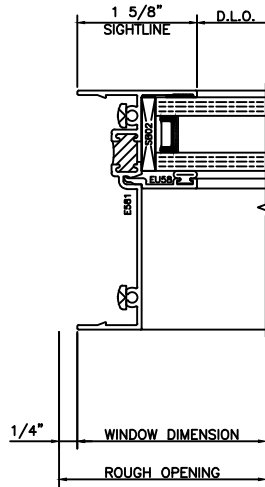
P: 417-235-7821
F: 417-737-7140
www.wintechinc.com

15 LOUVER JAMB
3250 FRONT SET @ SLEEVE OPENING

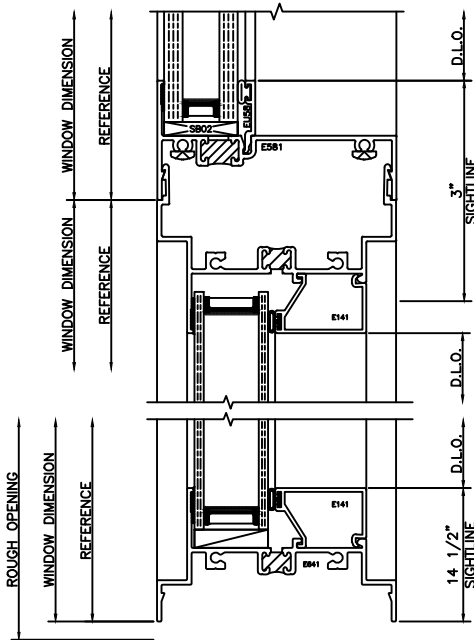
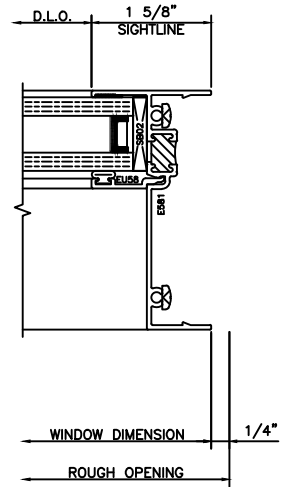


16 LOUVER JAMB
3250 FRONT SET @ SLEEVE OPENING

19 JAMB
3250 FRONT SET
OG HUNG REPLICA

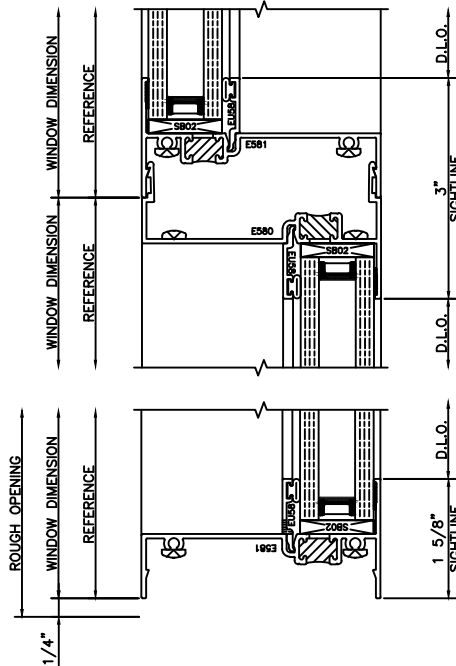


20 JAMB
3250 FRONT SET
OG HUNG REPLICA



21 STACK
3250 FRONT SET
IG/IG HUNG REPLICA

22 FIXED SILL
IG/IG HUNG REPLICA



17 STACK
3250 FRONT SET
IG/OG HUNG REPLICA

18 SILL
3250 FRONT SET
OG HUNG REPLICA

HALF SCALE DETAILS

WINTech

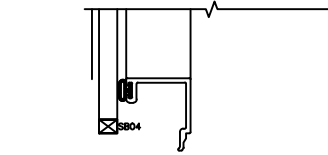
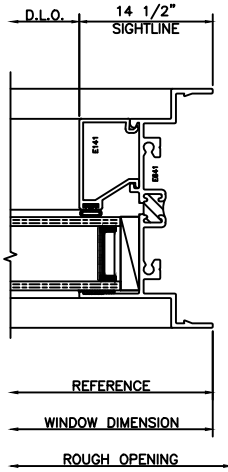
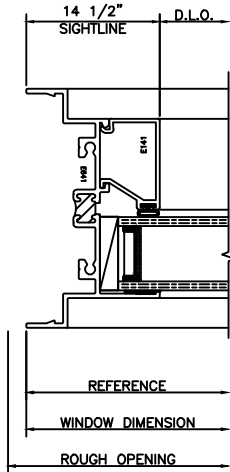
P.O. BOX 480
MONETT, MO 65708-0480

P: 417-235-7821
F: 417-737-7140
www.wintechinc.com

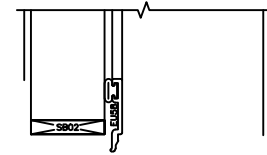
3250 FIXED (FRONT SET)

23 JAMB
3220 IG FIXED
@ HUNG REPLICA

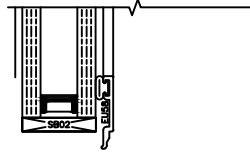
24 JAMB
3220 IG FIXED
@ HUNG REPLICA



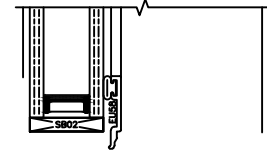
G7 1/4" NOM. GLAZING



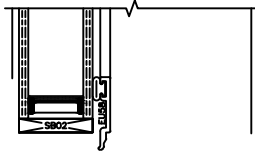
G8 1" INFILL BY OTHERS



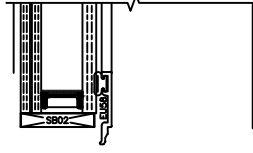
G9 1" INSUL. UNIT
1/4" - 1/2" A.S. - 1/4"



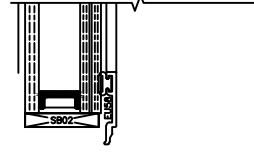
G10 1" INSUL. UNIT
3/16" - 5/8" A.S. - 3/16"



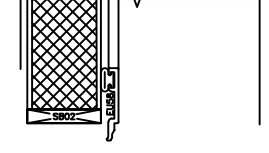
G11 1" INSUL. UNIT
1/8" - 3/4" A.S. - 1/8"



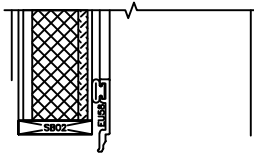
L3 1" INSUL. UNIT
1/4" LAMI-(1/8"-0.030 INNERLAYER-1/8")
-1/2" A.S.-3/16"



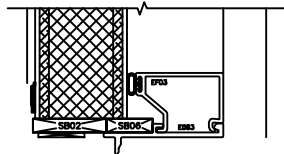
L4 1" INSUL. UNIT
3/16"-1/2" A.S.-1/4" LAMI-
(1/8"-0.030 INNERLAYER-1/8")



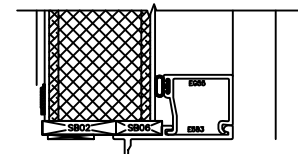
P3 1" NOM. INSUL. PANEL
TYPICAL 3 PLY STYLE
MAKE UP TO BE SPECIFIED



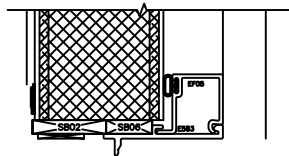
P4 1" NOM. INSUL. PANEL
TYPICAL 5 PLY STYLE
MAKE UP TO BE SPECIFIED



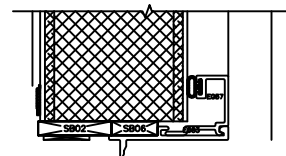
P5 1 1/4" NOM. INSUL. PANEL
TYPICAL 5 PLY STYLE
MAKE UP TO BE SPECIFIED



P6 1 1/2" NOM. INSUL. PANEL
TYPICAL 5 PLY STYLE
MAKE UP TO BE SPECIFIED



P7 1 3/4" NOM. INSUL. PANEL
TYPICAL 5 PLY STYLE
MAKE UP TO BE SPECIFIED



P8 2" NOM. INSUL. PANEL
TYPICAL 5 PLY STYLE
MAKE UP TO BE SPECIFIED

HALF SCALE DETAILS