

**3220 CENTER SET PROJECT OUT PERFORMANCE DATA:  
AAMA/WDMA/CSA 101/I.S.2/A440-08  
AAMA/WDMA/CSA 101/I.S.2/A440-11**

<b>Rating</b>	<b>CW-PG60-AP</b>
<b>Air Infiltration</b>	<b>&lt;0.15 cfm/ft @ 1.57 psf</b>
<b>Water Resistance</b>	<b>**0 leakage at 12.0 lb</b>
<b>Structural Performance</b>	<b>+/- 90.00 psf</b>
<b>Thermally Broken</b>	<b>Yes</b>
<b>Frame Depth</b>	<b>3-1/4"</b>
<b>Infill Options</b>	<b>Maximum 1"</b>

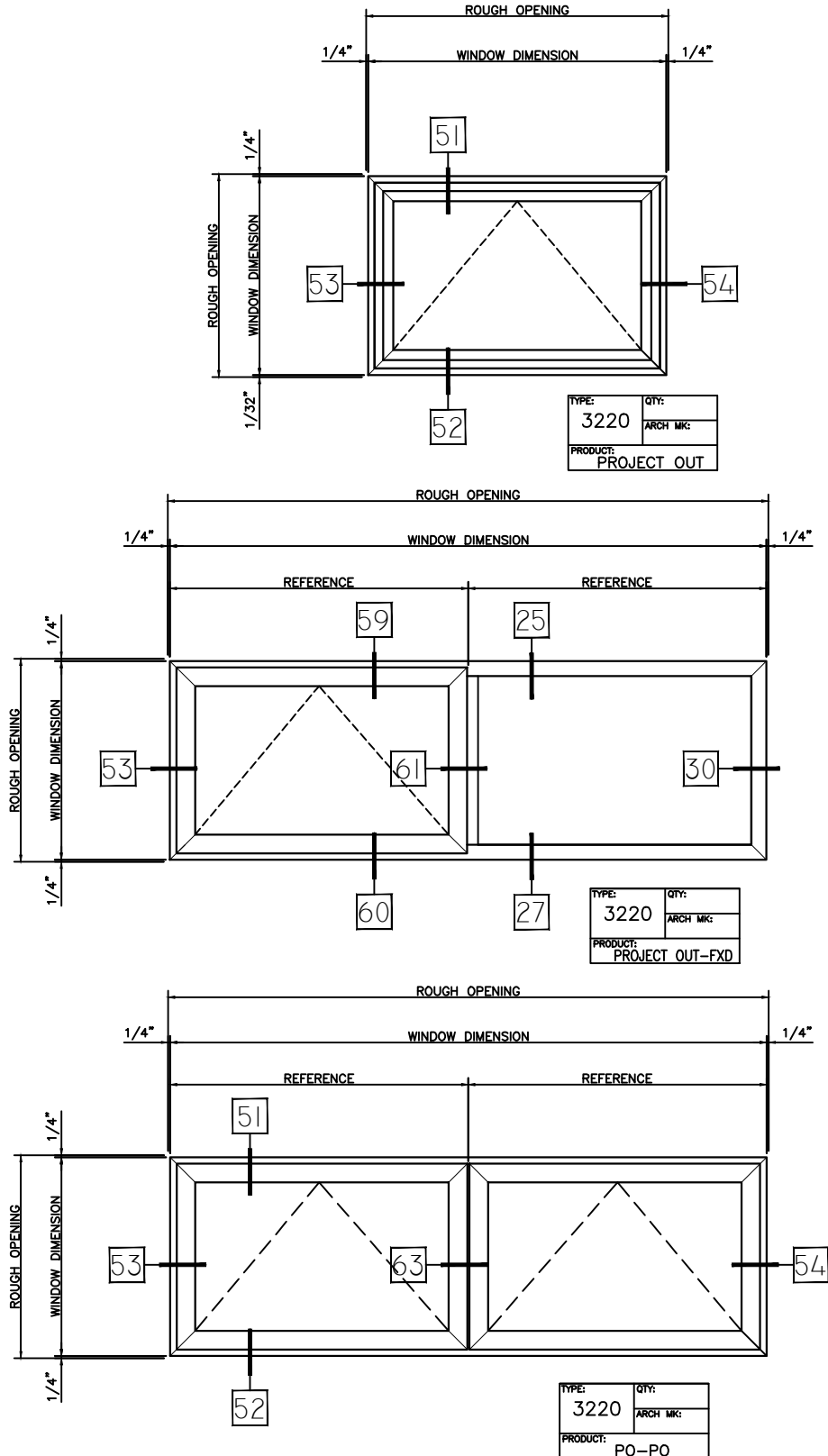
**\*\* Optional Water                    0 leakage at 15.0 lb**

# WINTech

P.O. BOX 480  
MONETT, MO 65708-0480

P: 417-235-7821  
F: 417-737-7140  
www.wintechinc.com

## 3220 PROJECT OUT (CENTER SET)



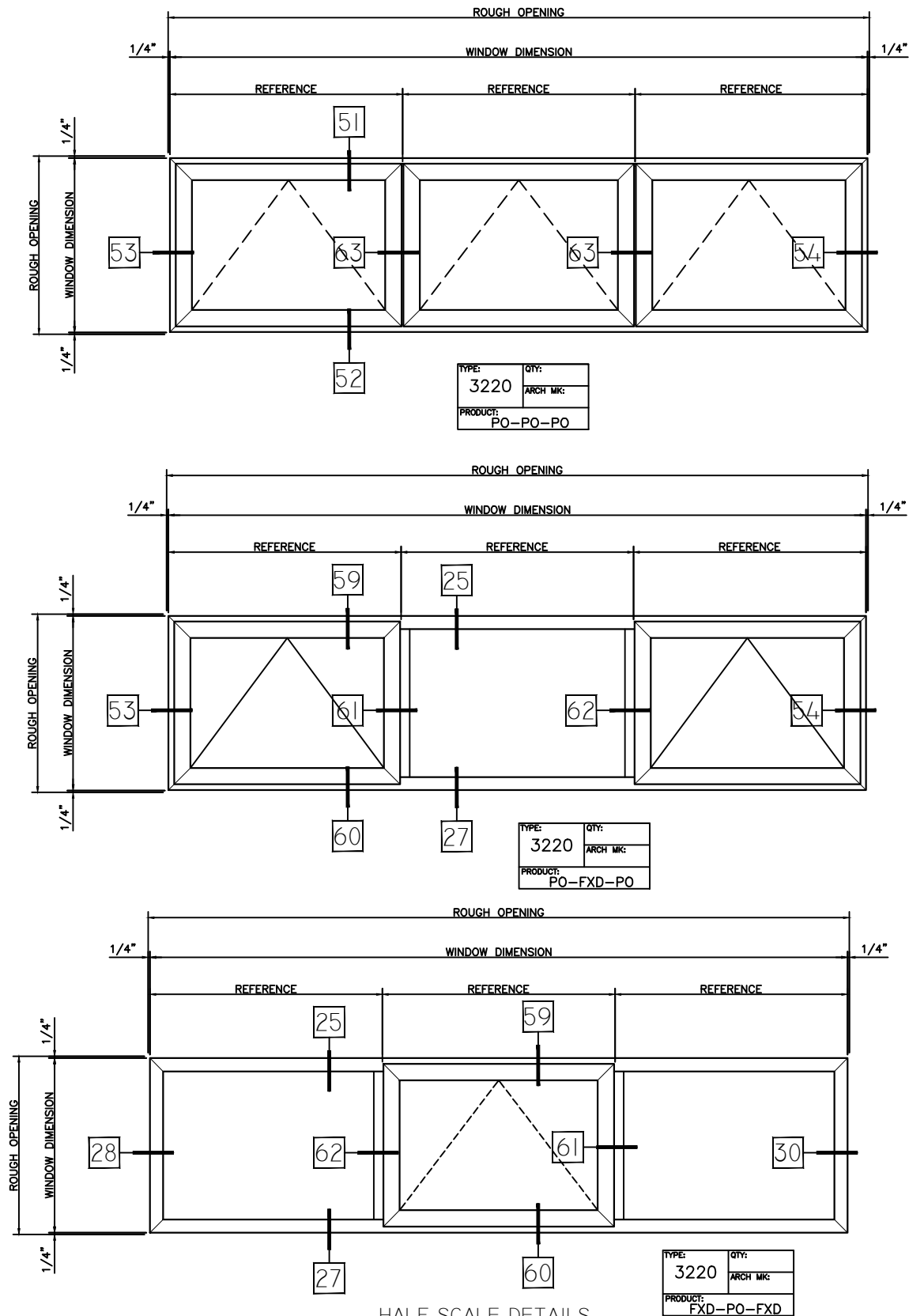
HALF SCALE DETAILS

# WINTech

P.O. BOX 480  
MONETT, MO 65708-0480

P: 417-235-7821  
F: 417-737-7140  
www.wintechinc.com

## 3220 PROJECT OUT (CENTER SET)



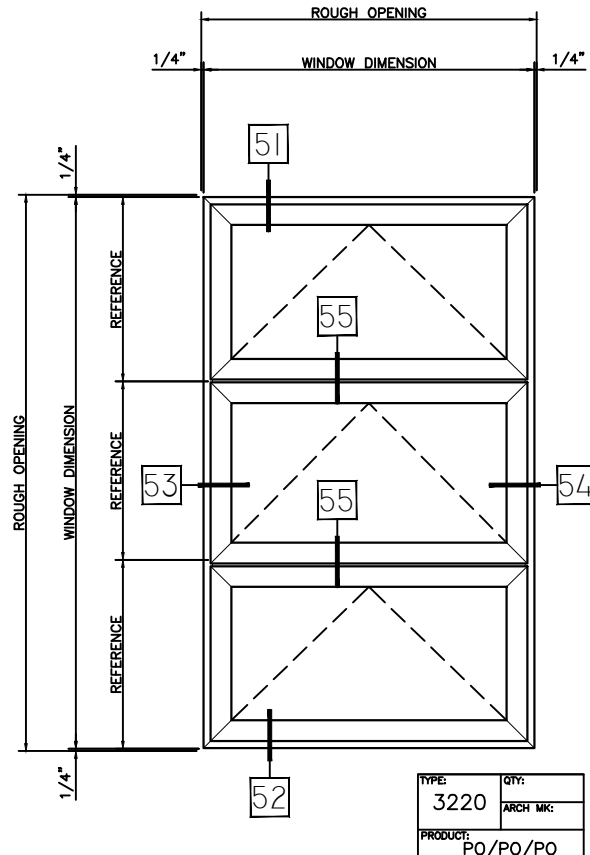
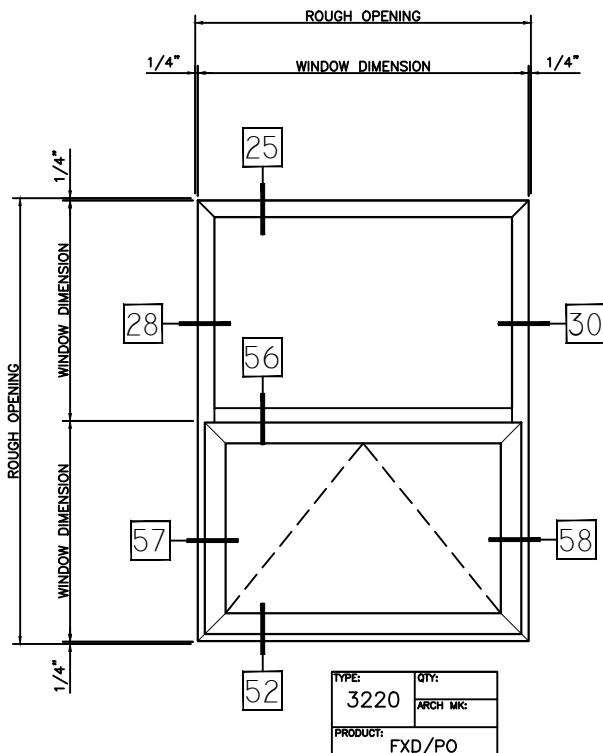
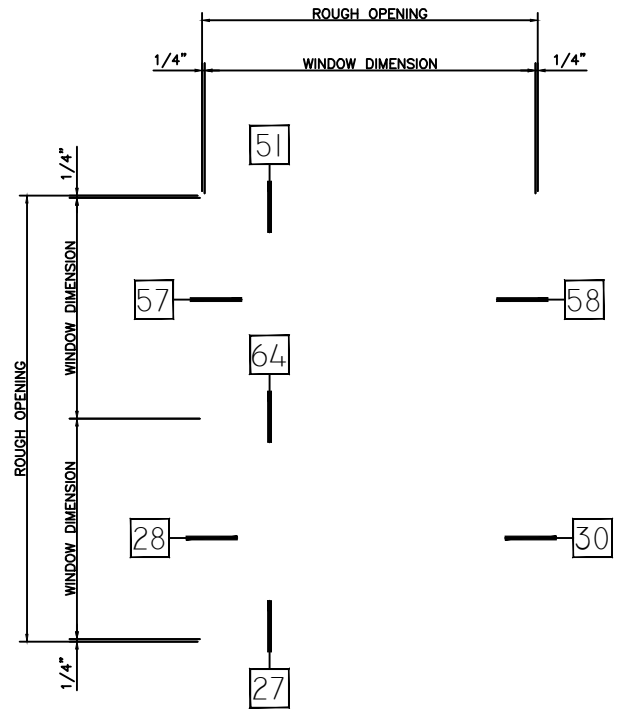
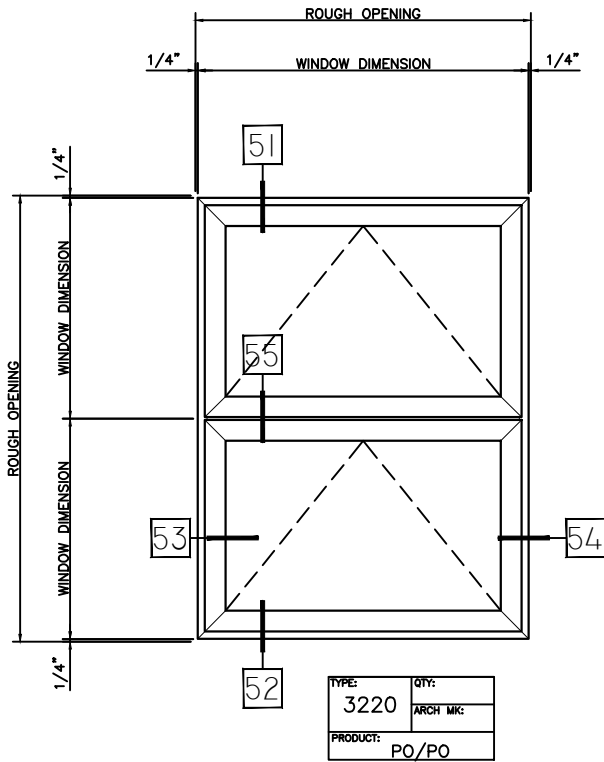
HALF SCALE DETAILS

# WINTeCH

P.O. BOX 480  
MONETT, MO 65708-0480

P: 417-235-7821  
F: 417-737-7140  
www.wintechinc.com

## 3220 PROJECT OUT (CENTER SET)



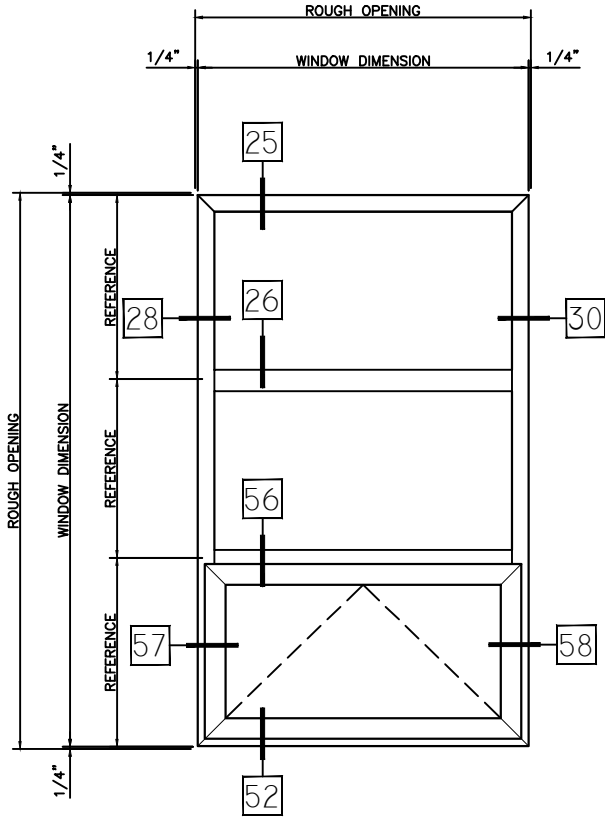
HALF SCALE DETAILS

# WINTeCH

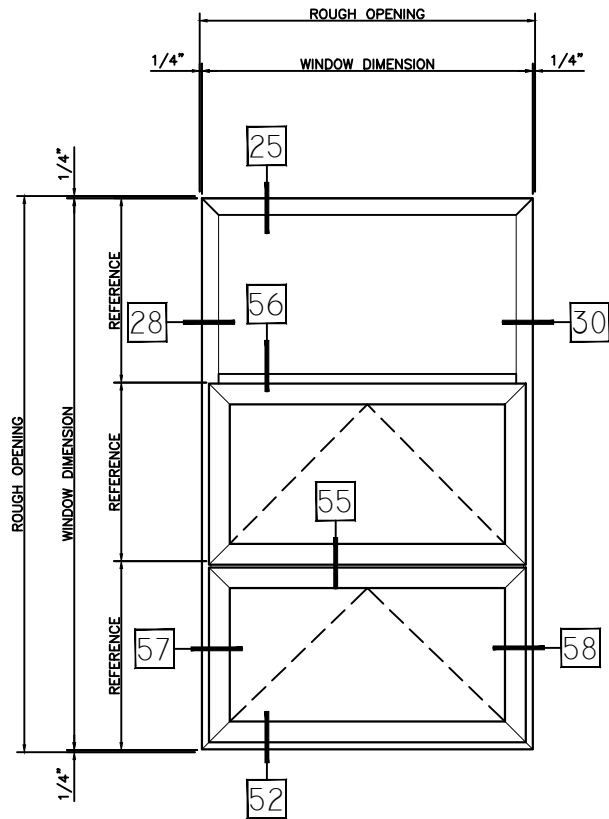
P.O. BOX 480  
 MONETT, MO 65708-0480

P: 417-235-7821  
 F: 417-737-7140  
 www.wintechinc.com

## 3220 PROJECT OUT (CENTER SET)



TYPE:	QTY:
3220	
ARCH MK:	
PRODUCT:	
FXD/FXD/PO	



TYPE:	QTY:
3220	
ARCH MK:	
PRODUCT:	
FXD/PO/PO	

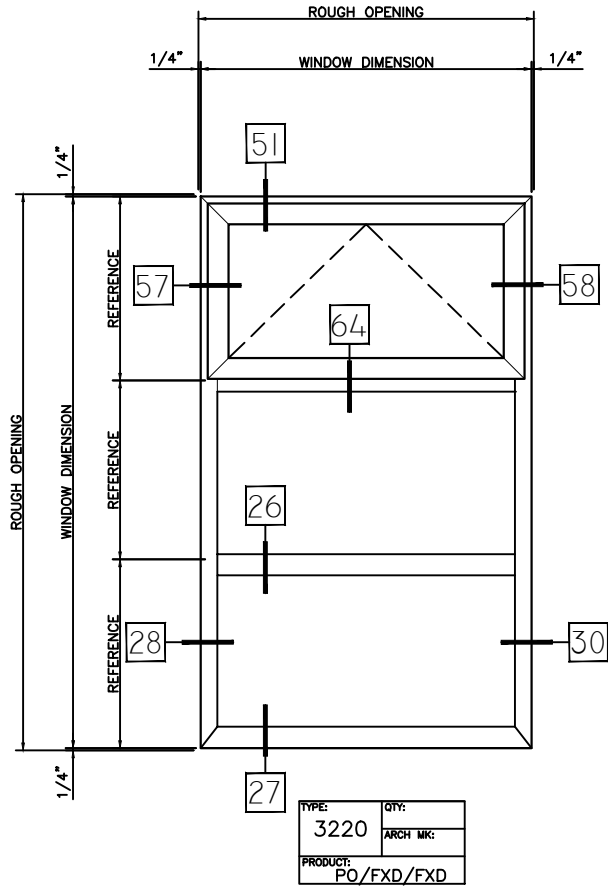
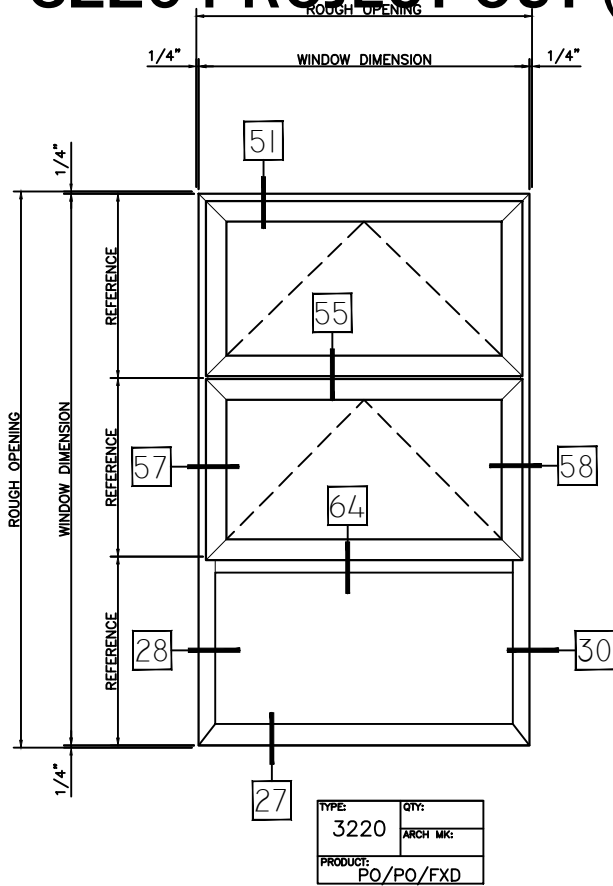
HALF SCALE DETAILS

# WINTECH

P.O. BOX 480  
MONETT, MO 65708-0480

P: 417-235-7821  
F: 417-737-7140  
www.wintechinc.com

## 3220 PROJECT OUT (CENTER SET)



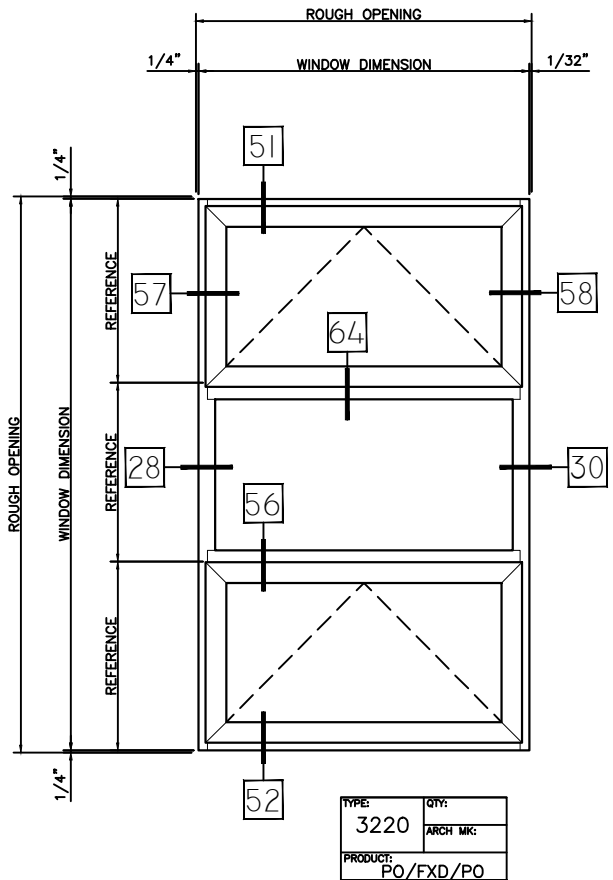
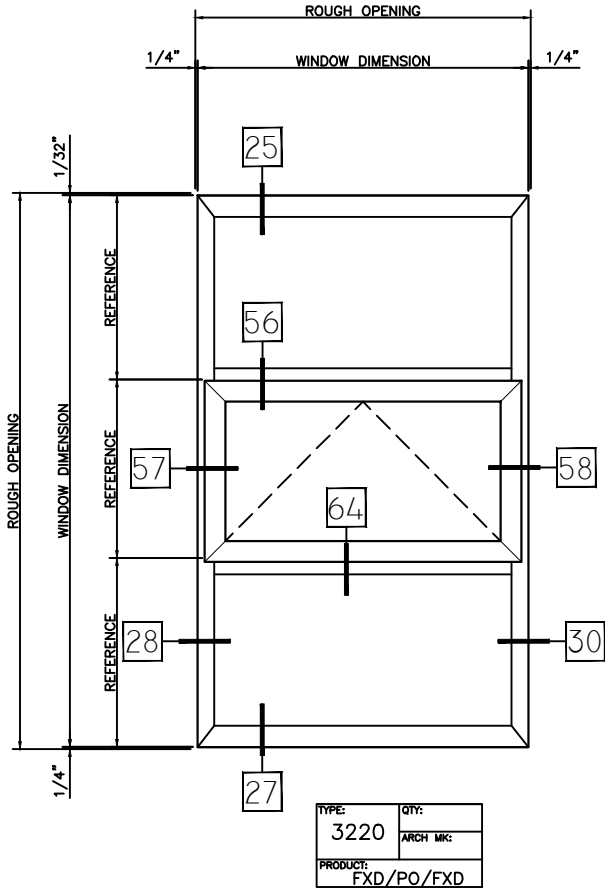
HALF SCALE DETAILS

# WINTeCH

P.O. BOX 480  
MONETT, MO 65708-0480

P: 417-235-7821  
F: 417-737-7140  
www.wintechinc.com

## 3220 PROJECT OUT (CENTER SET)



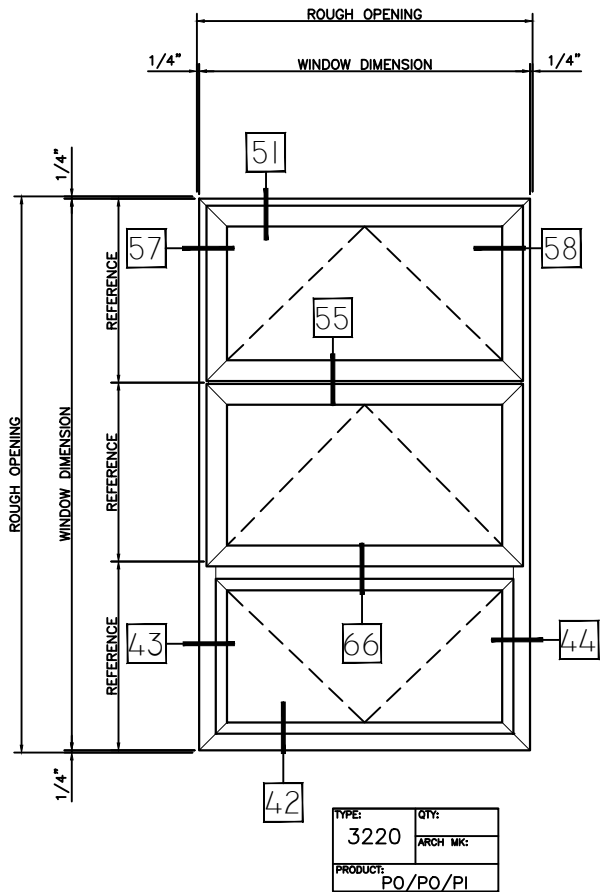
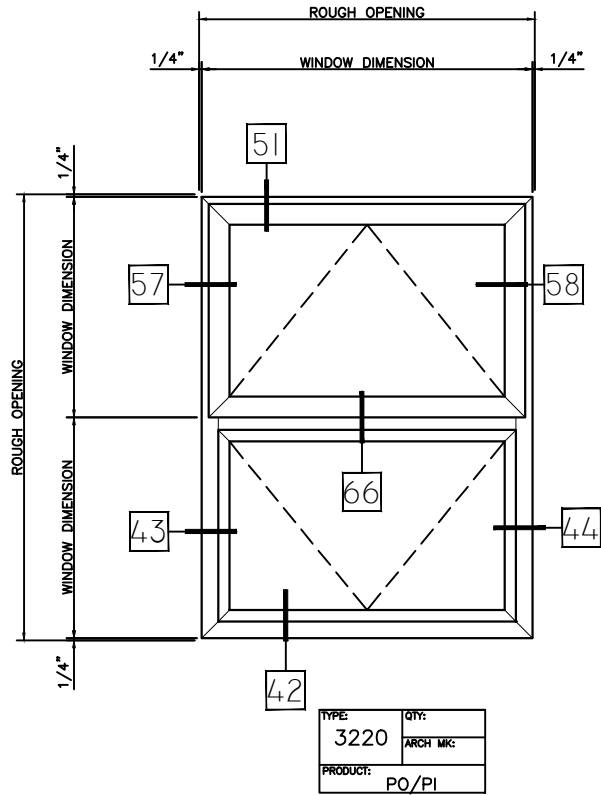
HALF SCALE DETAILS

# WINTech

P.O. BOX 480  
 MONETT, MO 65708-0480

P: 417-235-7821  
 F: 417-737-7140  
 www.wintechinc.com

## 3220 PROJECT OUT (CENTER SET)



HALF SCALE DETAILS

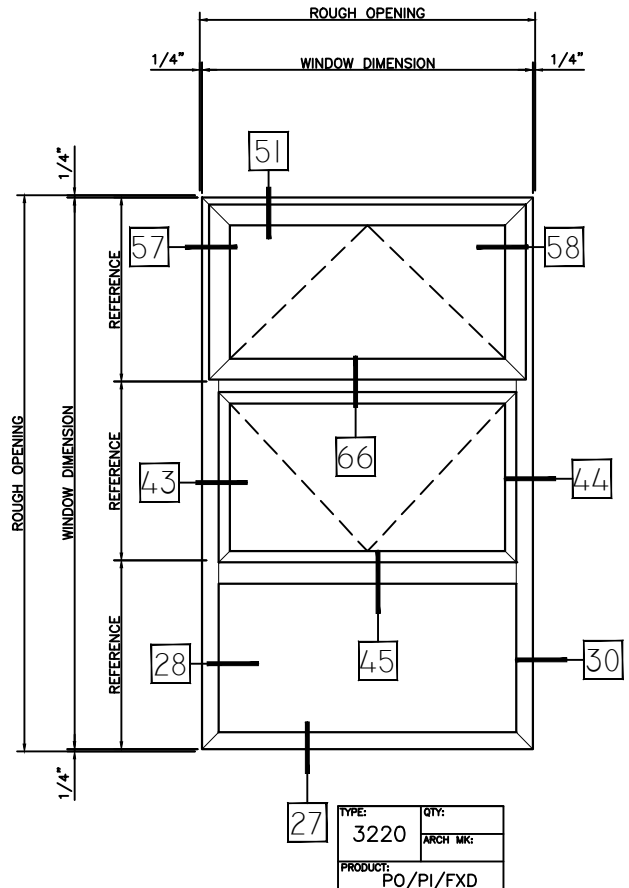
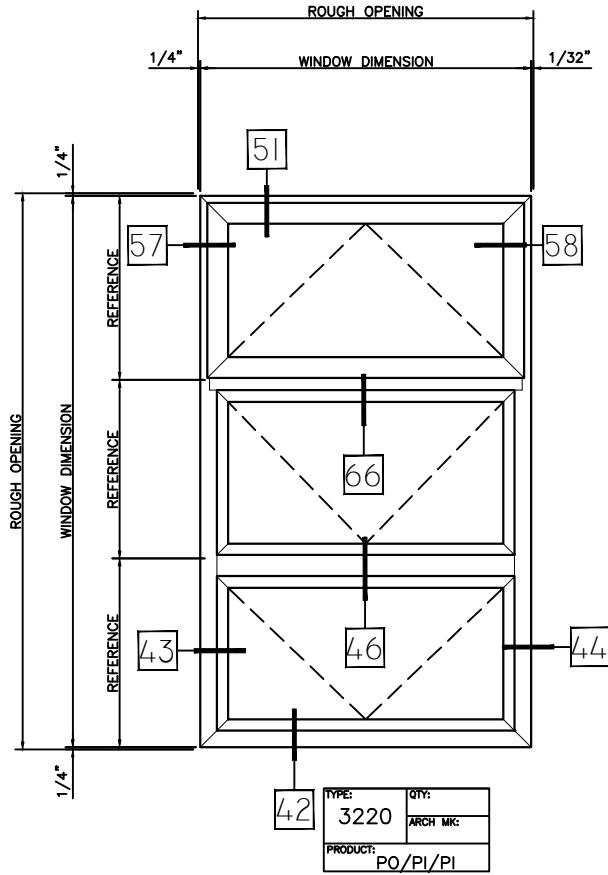


# WINTeCH

P.O. BOX 480  
MONETT, MO 65708-0480

P: 417-235-7821  
F: 417-737-7140  
www.wintechinc.com

## 3220 PROJECT OUT (CENTER SET)



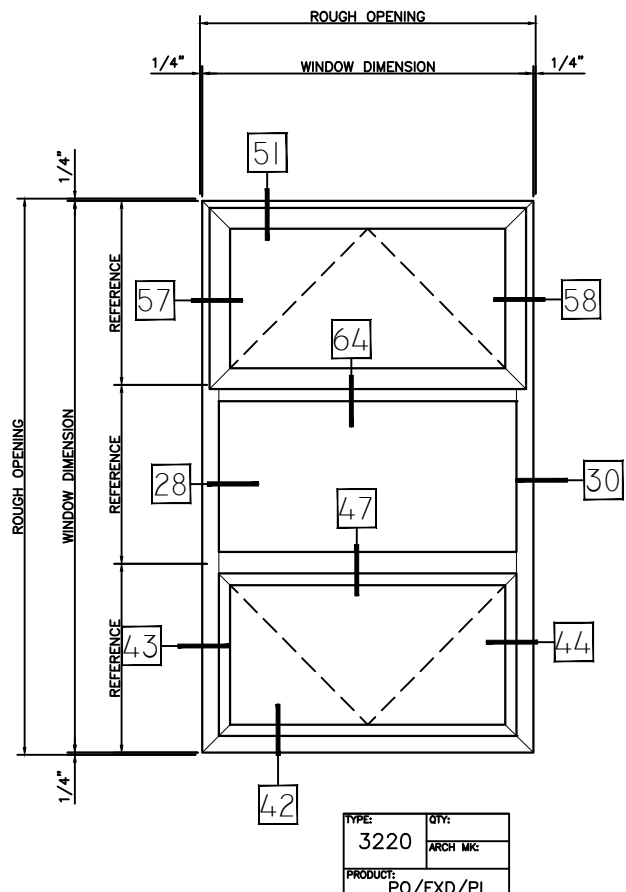
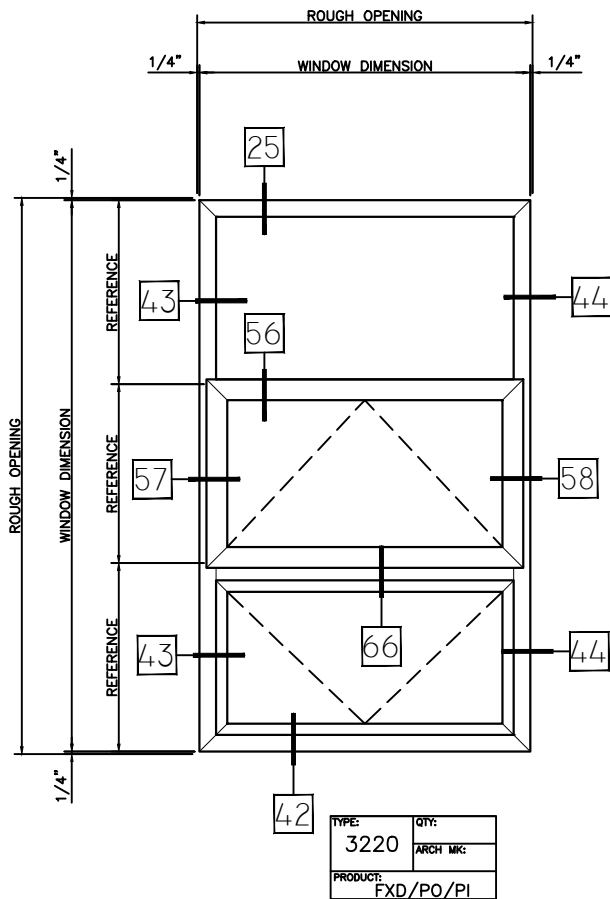
HALF SCALE DETAILS

# WINTeCH

P.O. BOX 480  
MONETT, MO 65708-0480

P: 417-235-7821  
F: 417-737-7140  
www.wintechinc.com

## 3220 PROJECT OUT (CENTER SET)



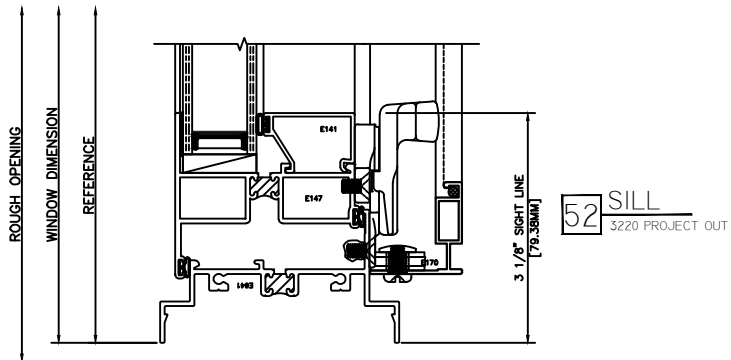
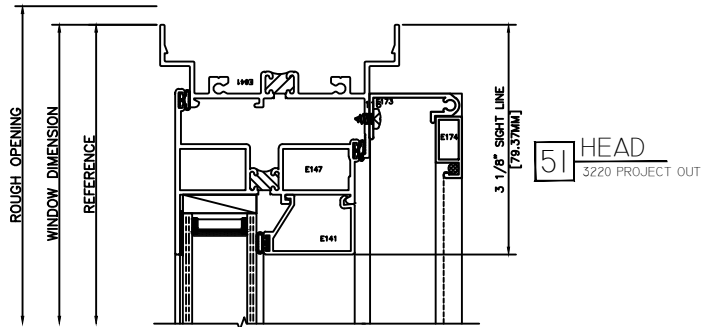
HALF SCALE DETAILS

# WINTeCH

P.O. BOX 480  
MONETT, MO 65708-0480

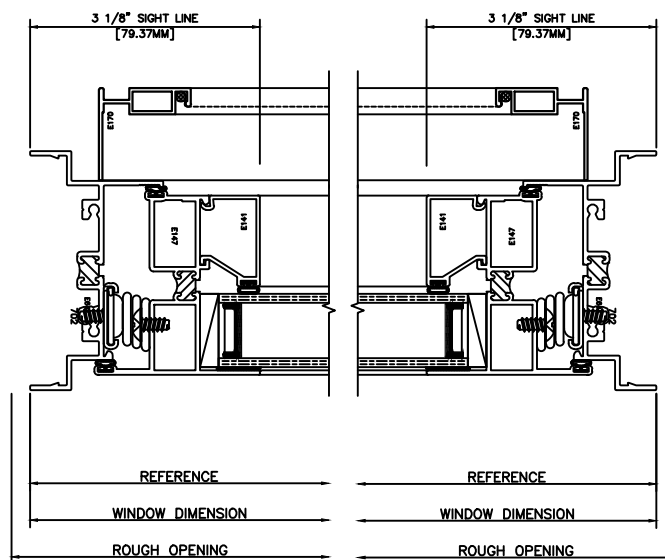
P: 417-235-7821  
F: 417-737-7140  
www.wintechinc.com

## 3220 PROJECT OUT (CENTER SET)



53 JAMB  
3220 PROJECT OUT

54 JAMB  
3220 PROJECT OUT



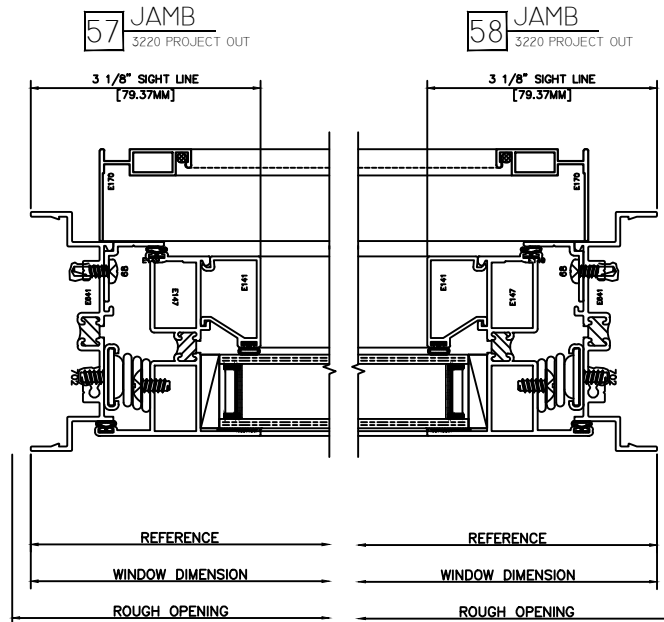
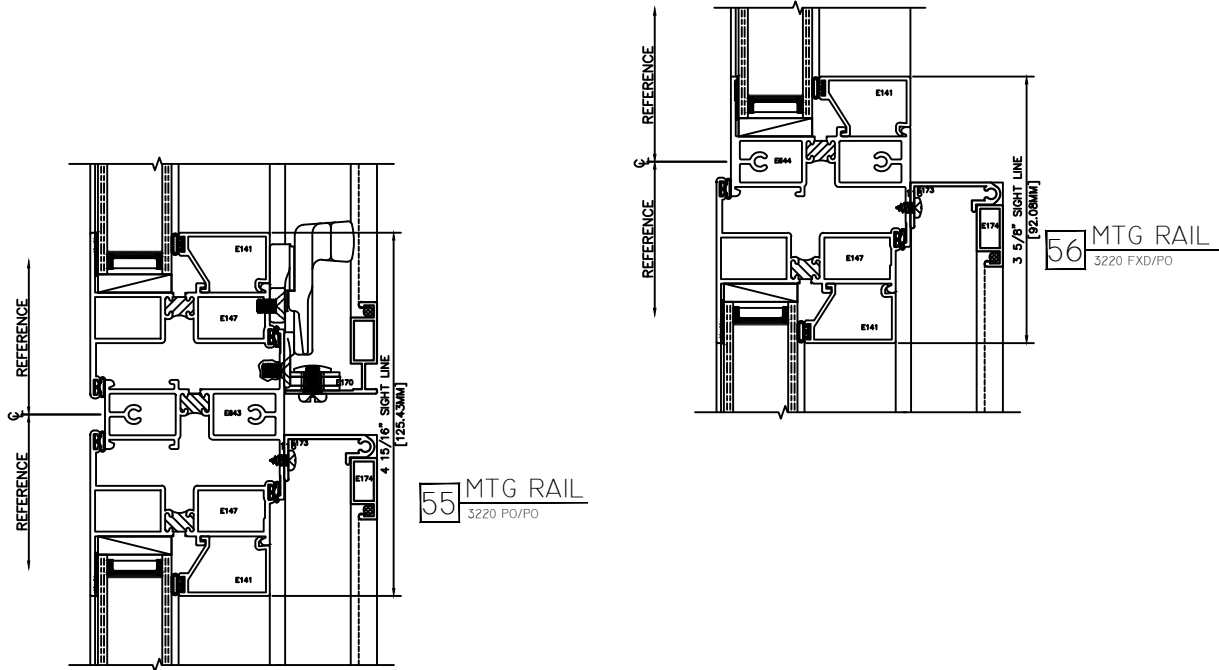
HALF SCALE DETAILS

# WINTech

P.O. BOX 480  
 MONETT, MO 65708-0480

P: 417-235-7821  
 F: 417-737-7140  
 www.wintechinc.com

## 3220 PROJECT OUT (CENTER SET)



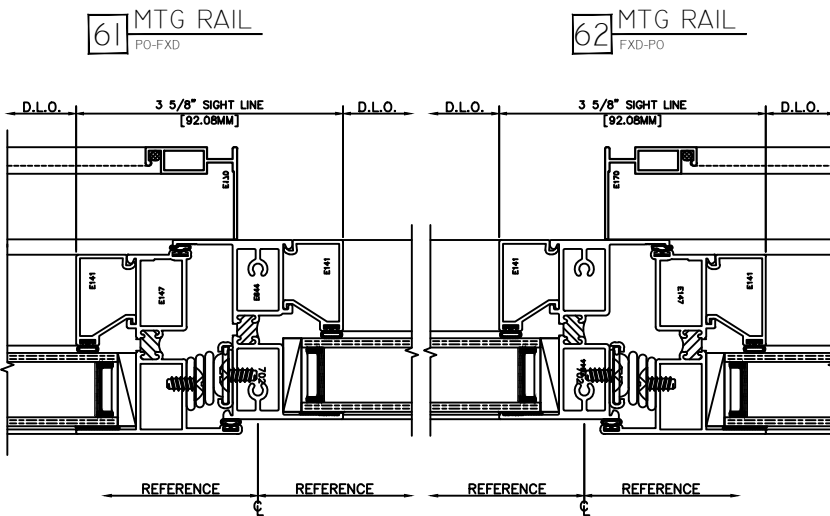
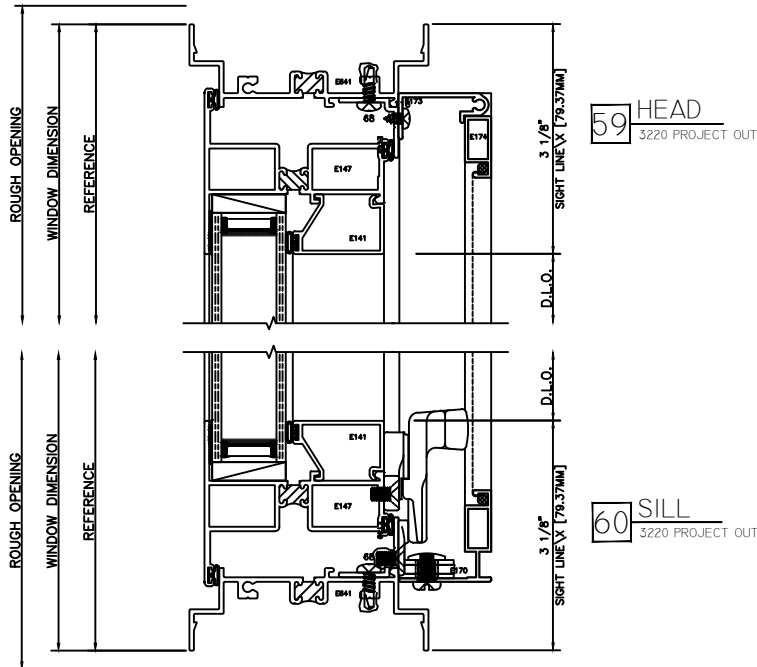
HALF SCALE DETAILS

# WINTech

P.O. BOX 480  
 MONETT, MO 65708-0480

P: 417-235-7821  
 F: 417-737-7140  
 www.wintechinc.com

## 3220 PROJECT OUT (CENTER SET)



HALF SCALE DETAILS

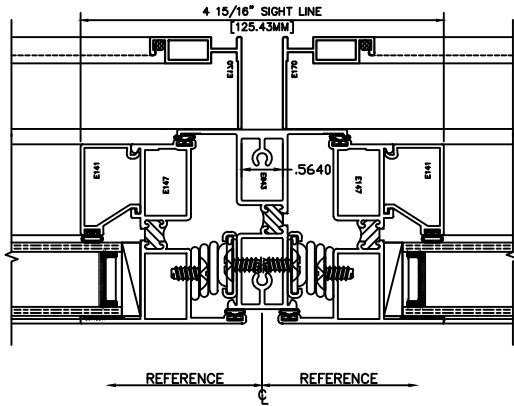
# WINTech

P.O. BOX 480  
MONETT, MO 65708-0480

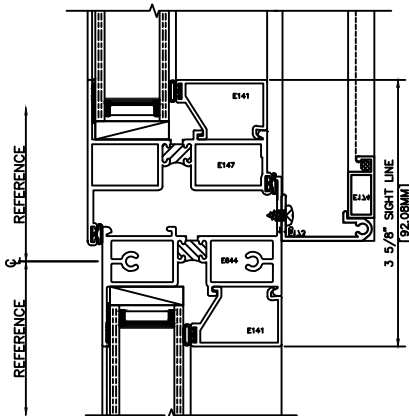
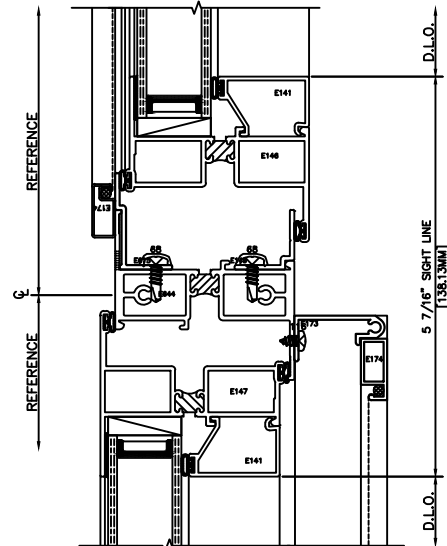
P: 417-235-7821  
F: 417-737-7140  
www.wintechinc.com

## 3220 PROJECT OUT (CENTER SET)

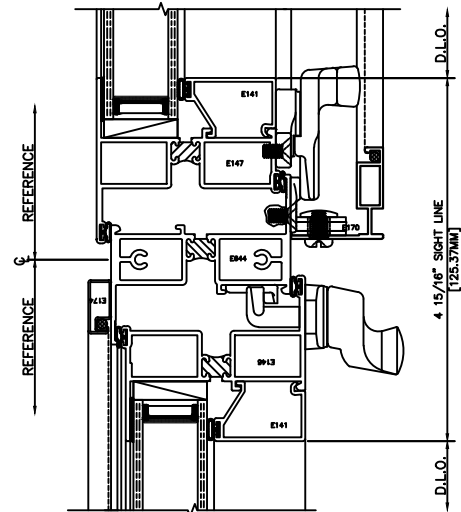
63 MTG RAIL  
PO/PO



65 MTG RAIL  
3220 PROJ IN/PROJ OUT



64 MTG RAIL  
PO/FXD



66 MTG RAIL  
3220 PROJ OUT/PROJ IN

HALF SCALE DETAILS