

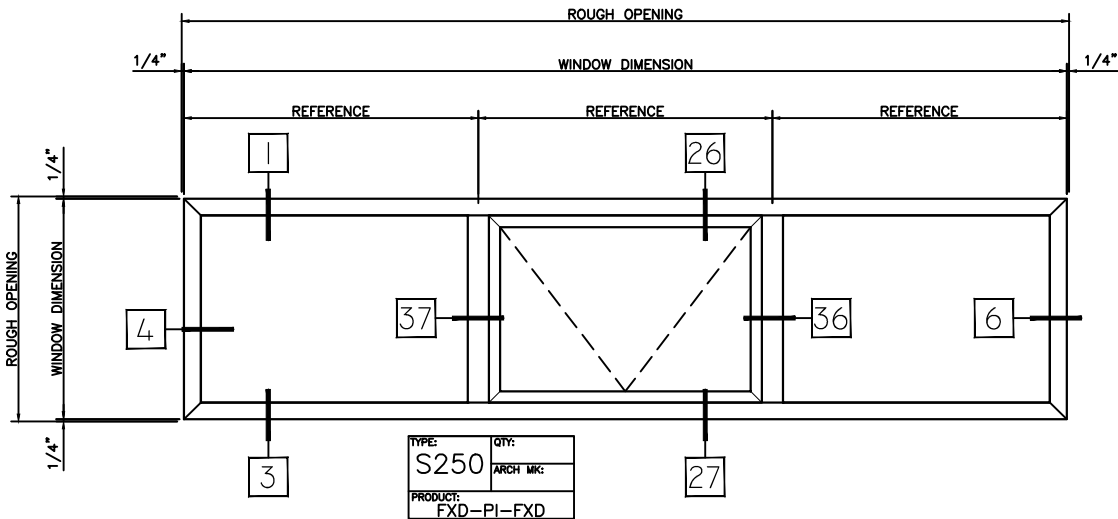
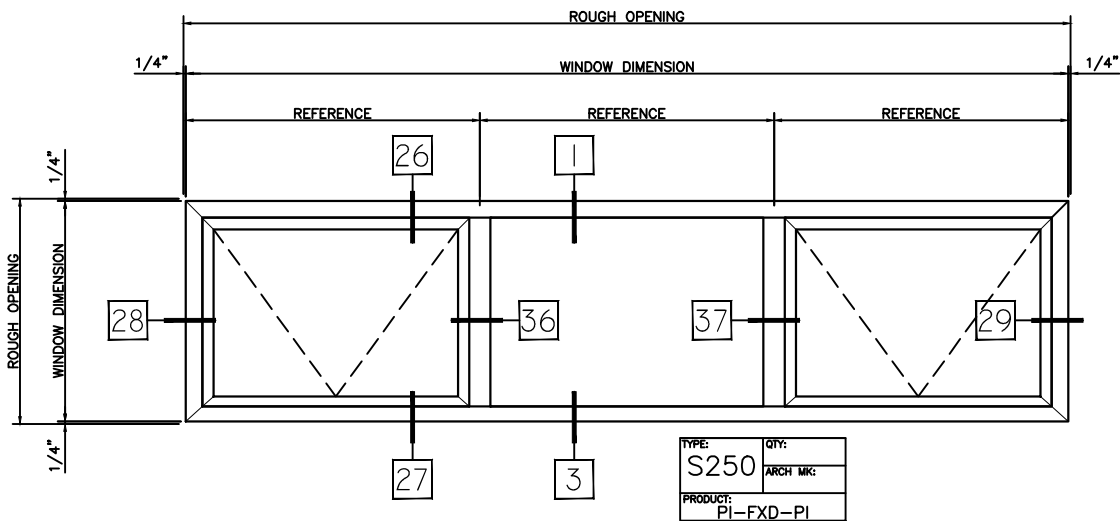
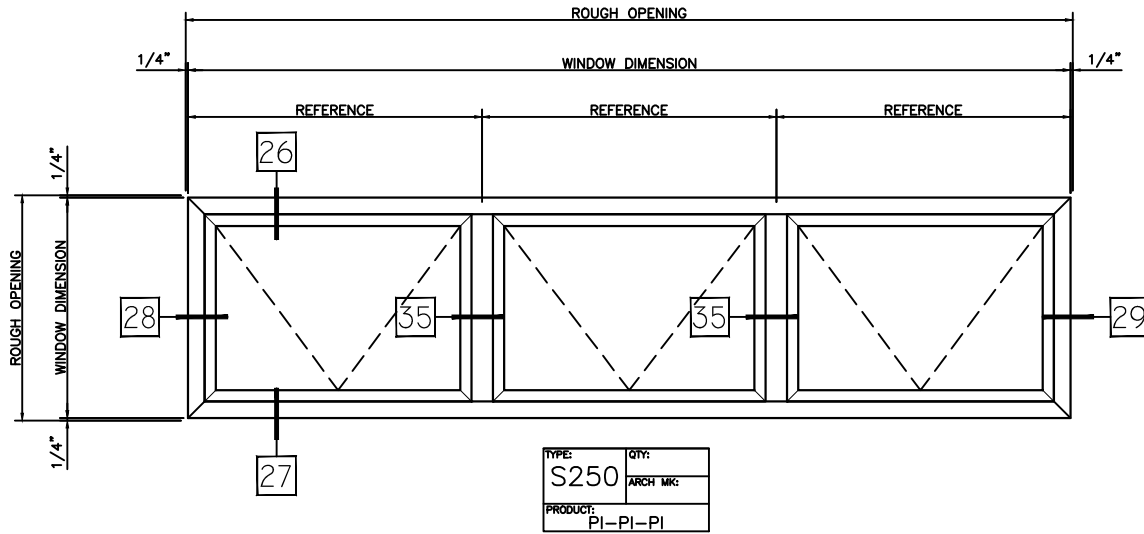
**S251 PROJECT IN PERFORMANCE DATA:
AAMA/WDMA/CSA 101/I.S.2/A440-08
AAMA/WDMA/CSA 101/I.S.2/A440-11**

Rating	CW-PG60-AP
Air Infiltration	<0.01 cfm/ft @ 1.57 psf
Water Resistance	0 leakage at 12.0 lb
Structural Performance	+/- 90.00 psf
Thermally Broken	Yes
Frame Depth	2-1/2"
Infill Options	Maximum 1"

WINTECH

P.O. BOX 480
MONETT, MO 65708-0480

P: 417-235-7821
F: 417-737-7140
www.wintechinc.com

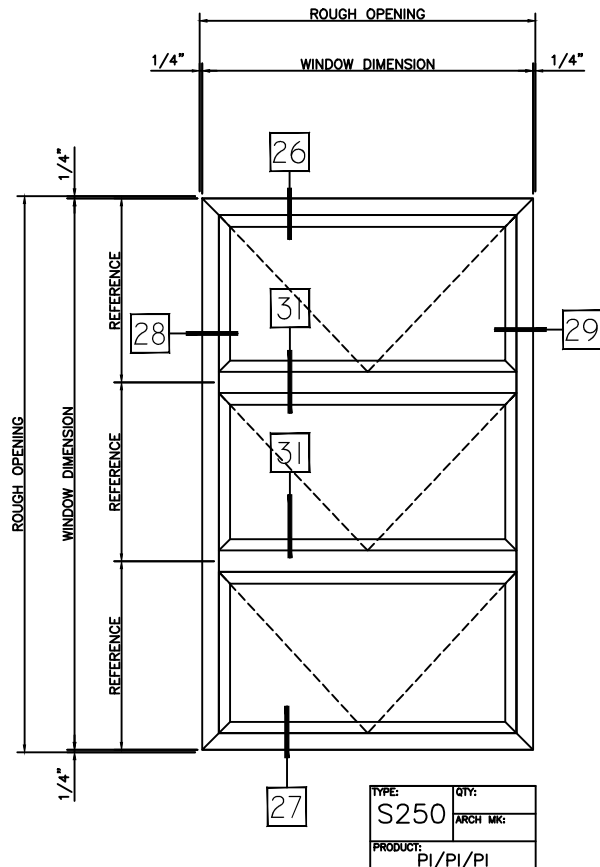
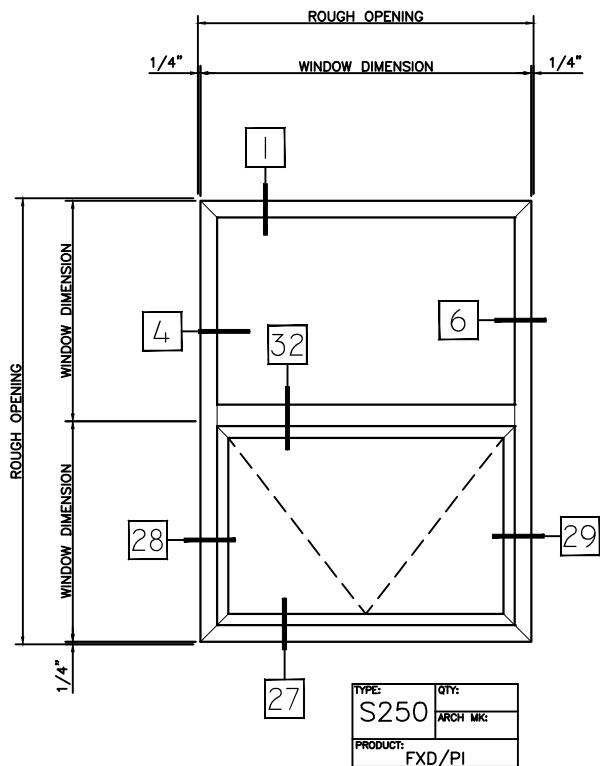
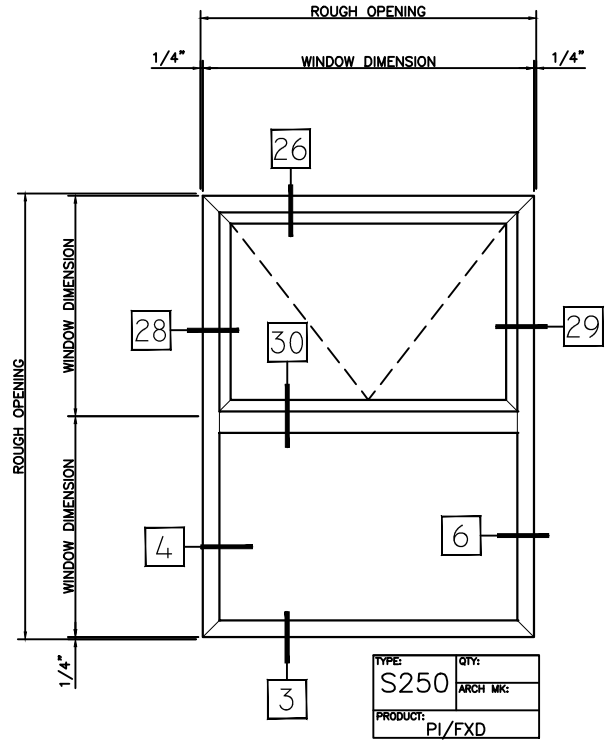
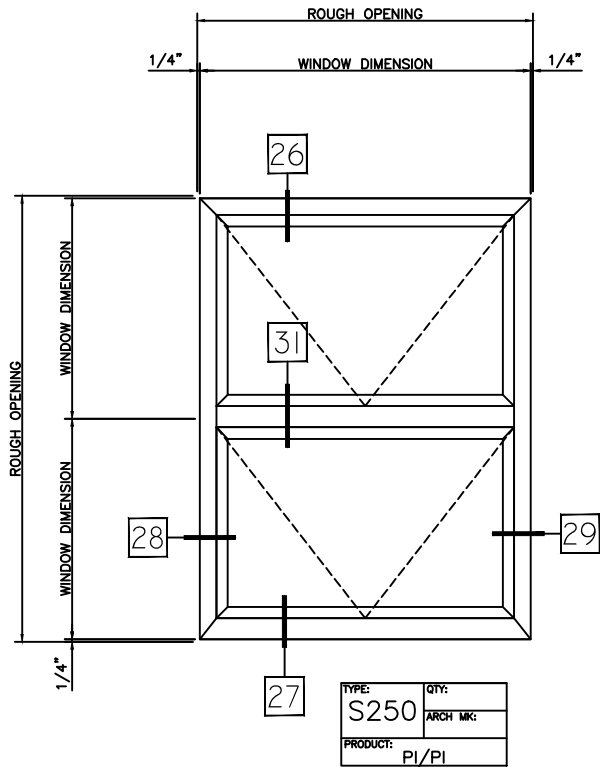


HALF SCALE DETAILS

WINTeCH

P.O. BOX 480
MONETT, MO 65708-0480

P: 417-235-7821
F: 417-737-7140
www.wintechinc.com

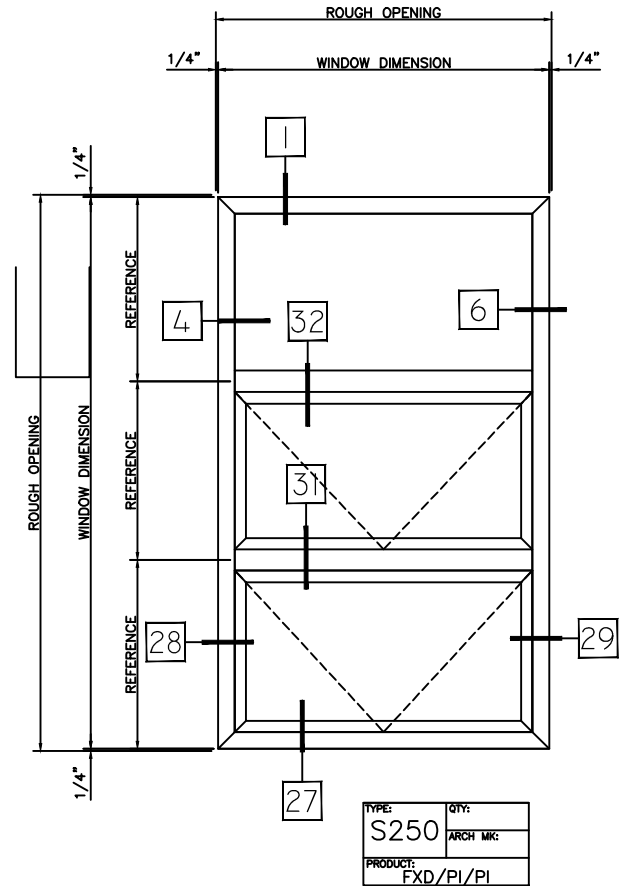
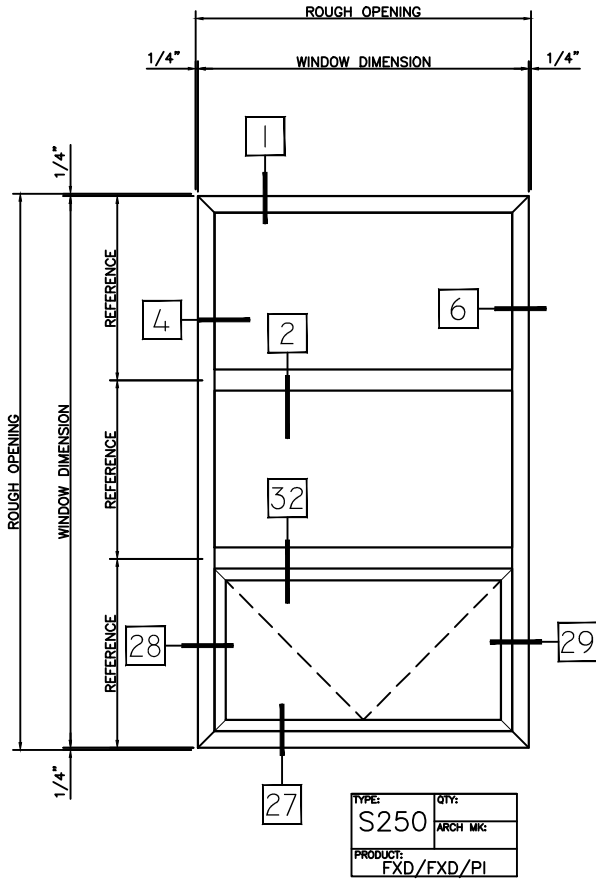


HALF SCALE DETAILS

WINTECH

P.O. BOX 480
 MONETT, MO 65708-0480

P: 417-235-7821
 F: 417-737-7140
 www.wintechinc.com

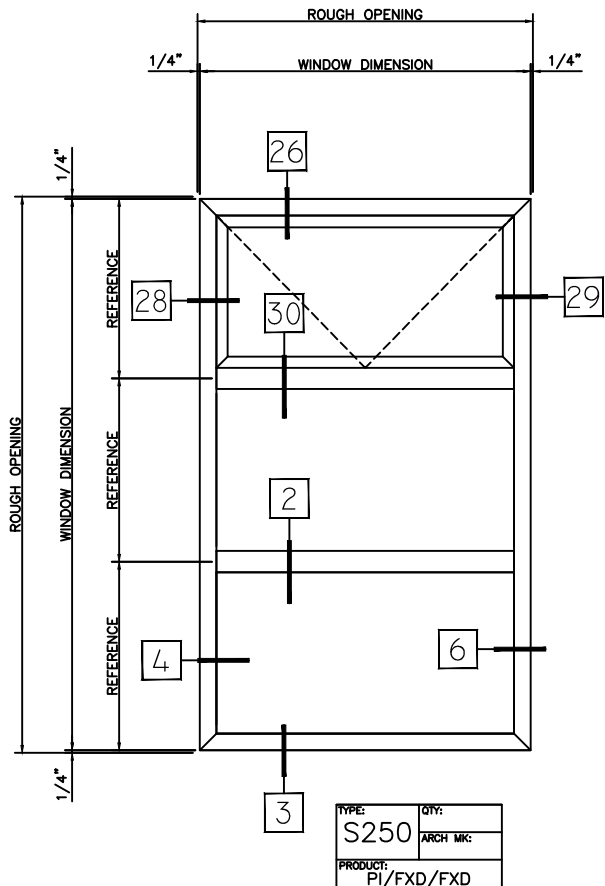
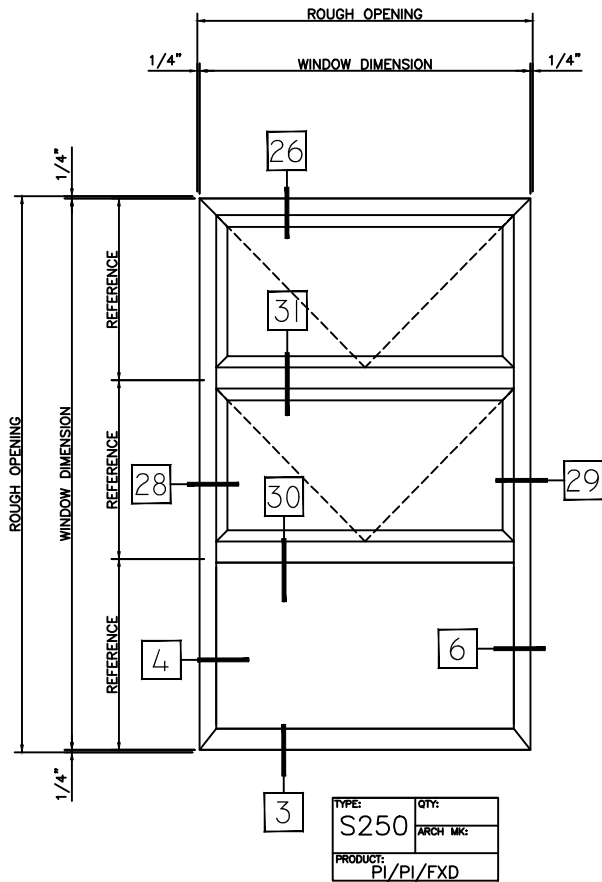


HALF SCALE DETAILS

WINTeCH

P.O. BOX 480
 MONETT, MO 65708-0480

P: 417-235-7821
 F: 417-737-7140
 www.wintechinc.com

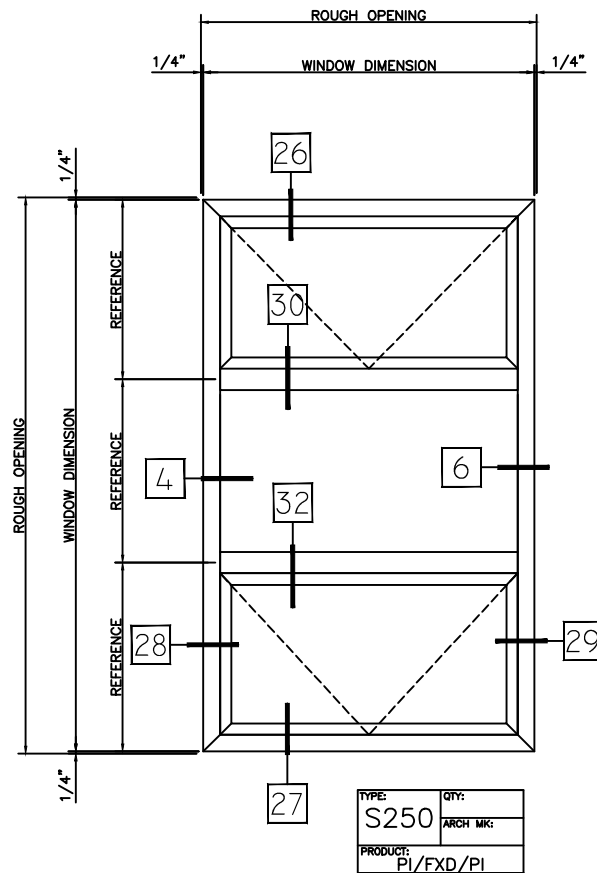
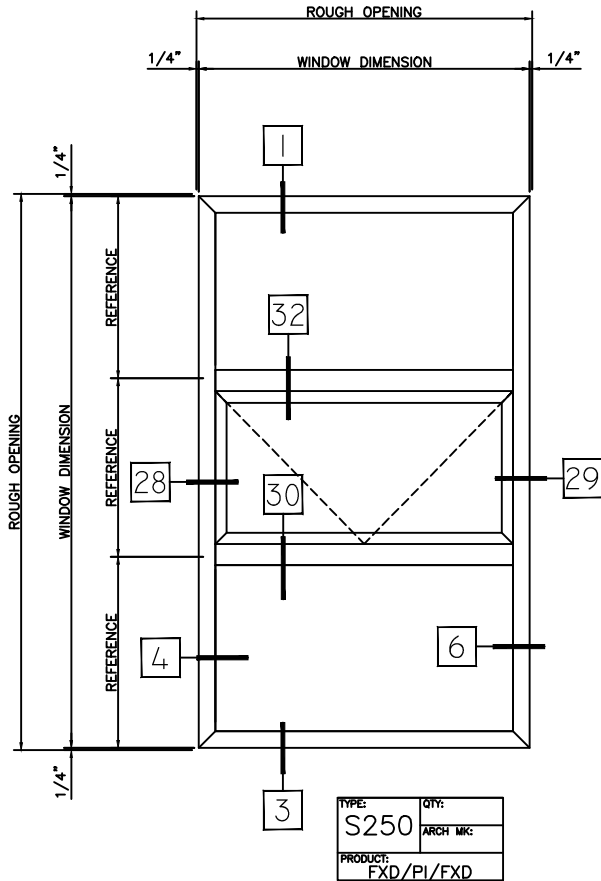


HALF SCALE DETAILS

WINTECH

P.O. BOX 480
MONETT, MO 65708-0480

P: 417-235-7821
F: 417-737-7140
www.wintechinc.com

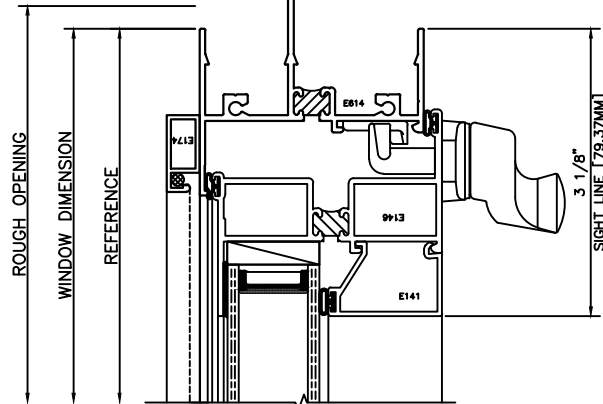


HALF SCALE DETAILS

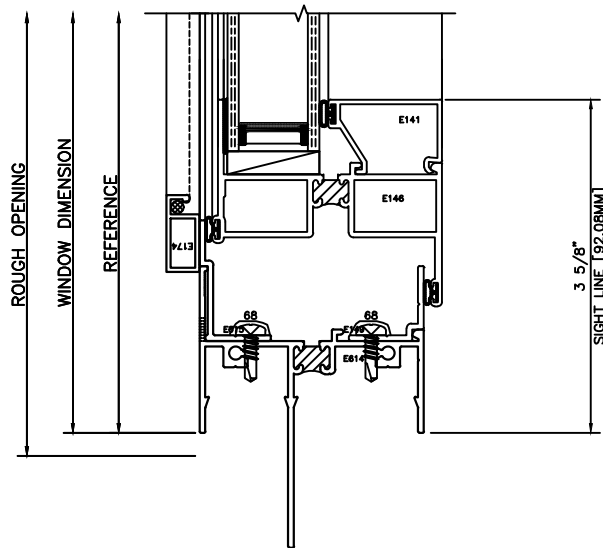
WINTECH

P.O. BOX 480
 MONETT, MO 65708-0480

P: 417-235-7821
 F: 417-737-7140
 www.wintechinc.com

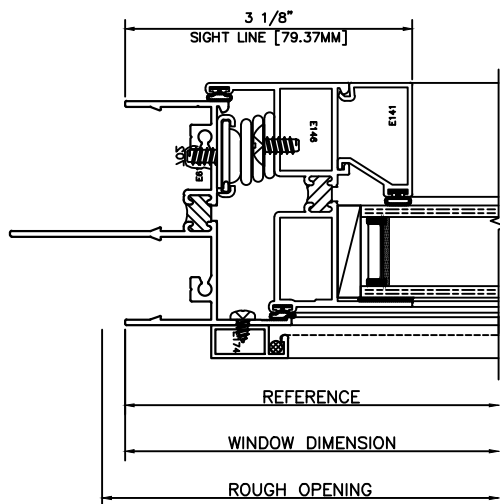


26 HEAD
 PROJECT IN

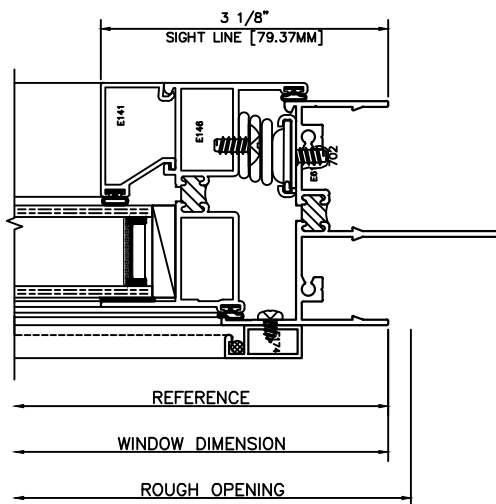


27 SILL
 PROJECT IN

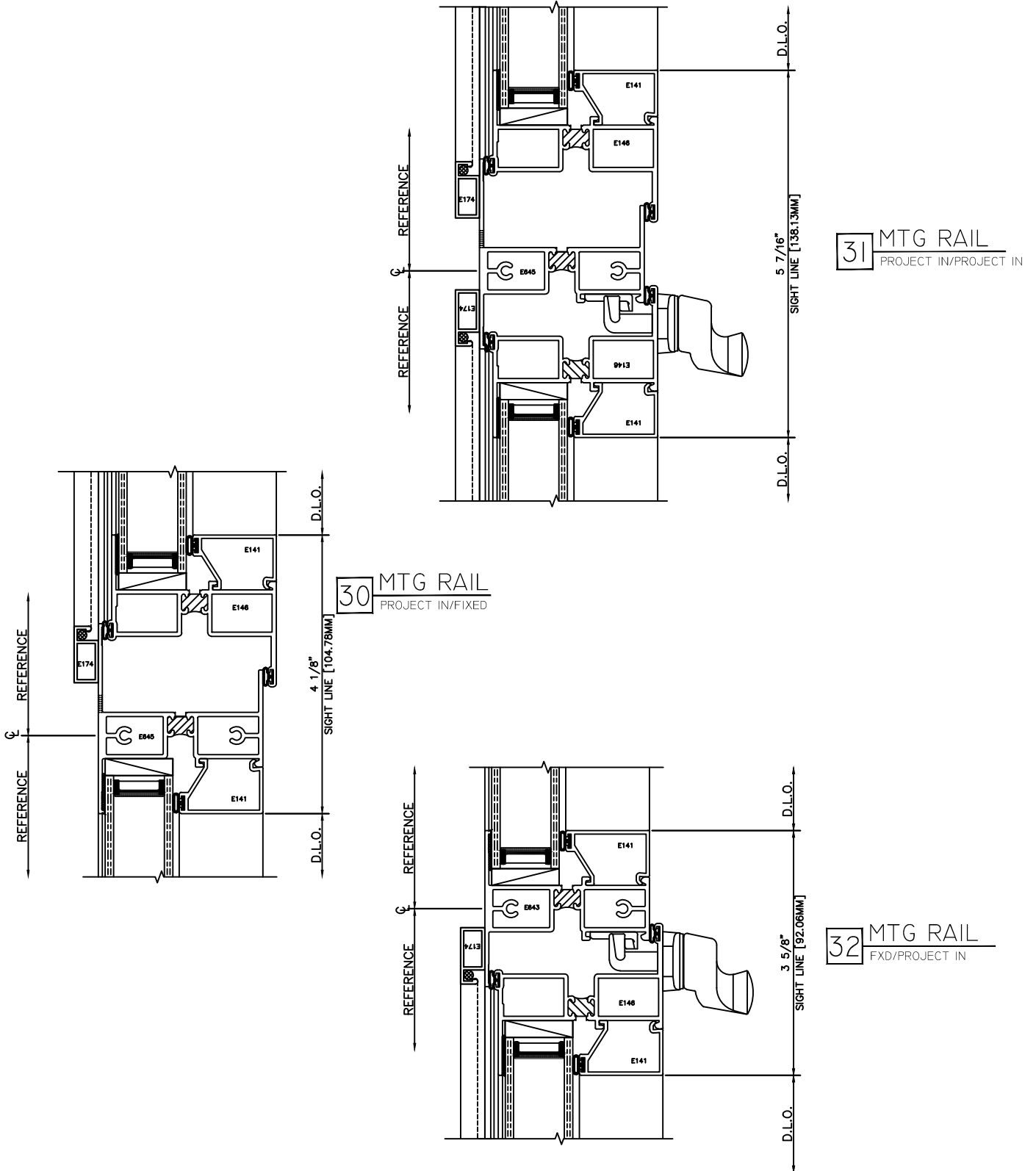
28 JAMB
 PROJECT IN



29 JAMB
 PROJECT IN



HALF SCALE DETAILS



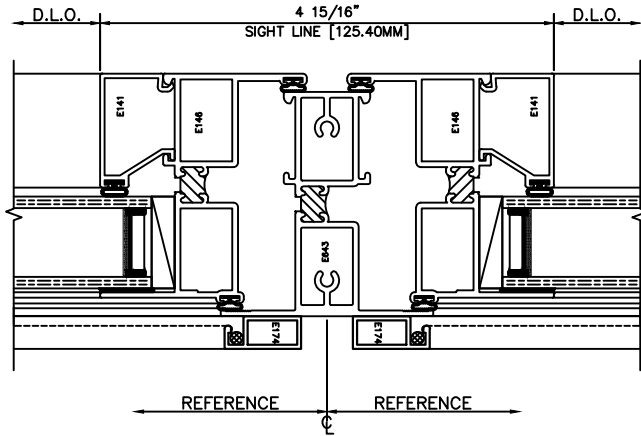
HALF SCALE DETAILS

WINTECH

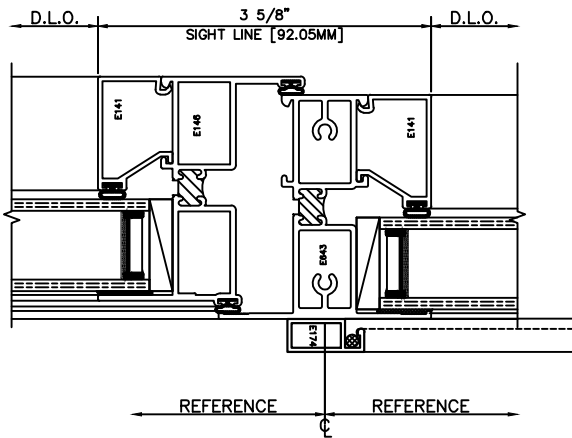
P.O. BOX 480
MONETT, MO 65708-0480

P: 417-235-7821
F: 417-737-7140
www.wintechinc.com

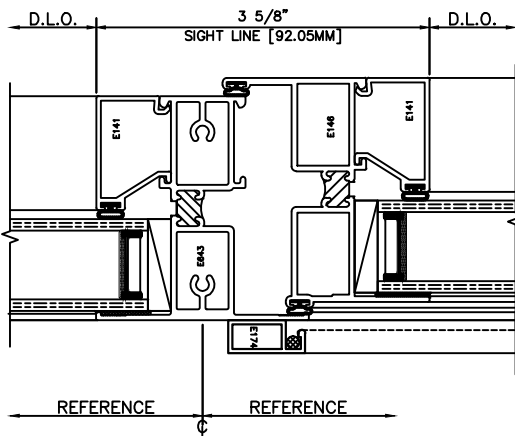
35 VERTICAL MUNTIN
PROJECT IN-PROJECT IN



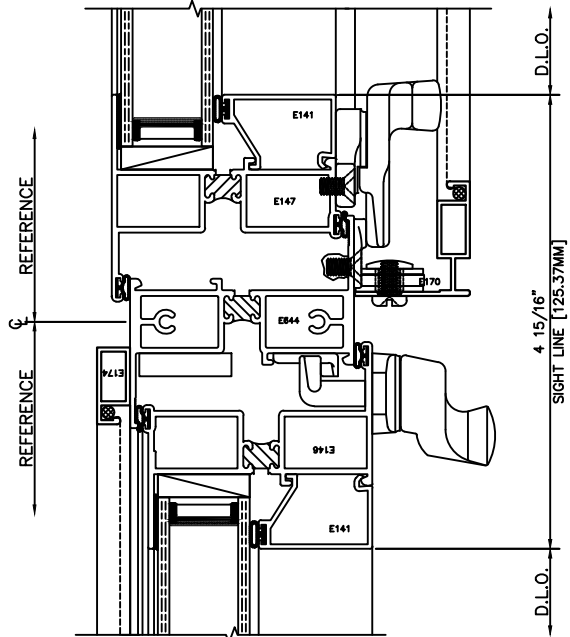
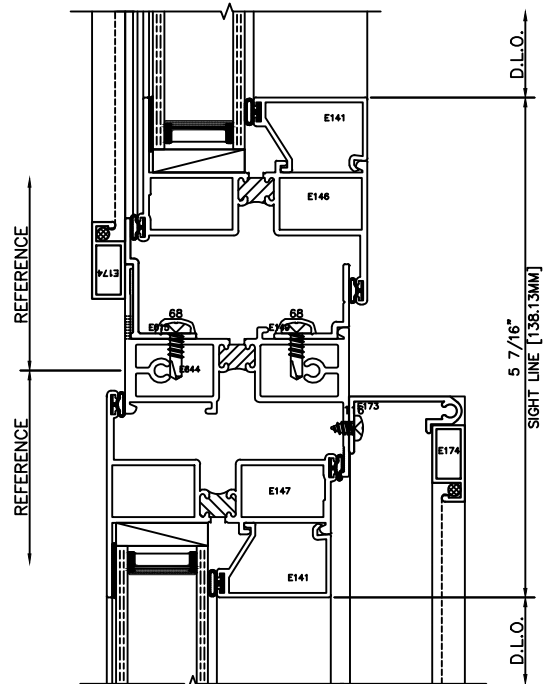
36 VERTICAL MUNTIN
PROJECT IN-FIXED



37 VERTICAL MUNTIN
FIXED-PROJECT IN



33 MTG RAIL
PROJ IN/PROJ OUT



34 MTG RAIL
PROJ OUT/PROJ IN

HALF SCALE DETAILS