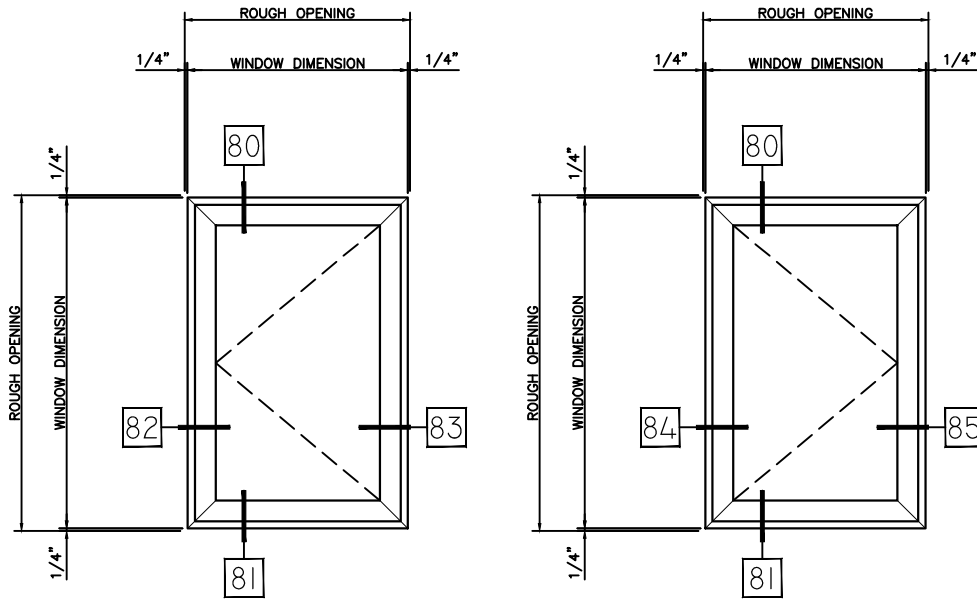


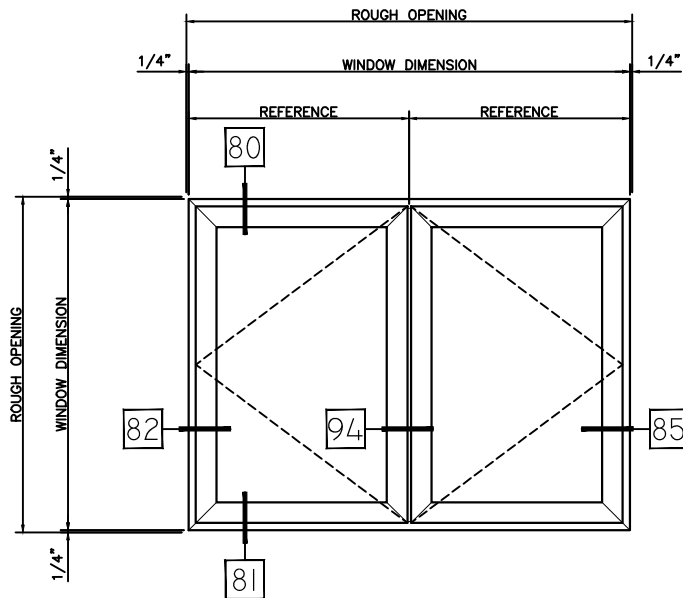
**S251 PROJECT OUT CASEMENT PERFORMANCE DATA:
AAMA/WDMA/CSA 101/I.S.2/A440-08
AAMA/WDMA/CSA 101/I.S.2/A440-11**

Rating	CW-PG60-C
Air Infiltration	<0.15 cfm/ft @ 1.57 psf
Water Resistance	**0 leakage at 12.0 lb
Structural Performance	+/- 90.00 psf
Thermally Broken	Yes
Frame Depth	2-1/2"
Infill Options	Maximum 1"



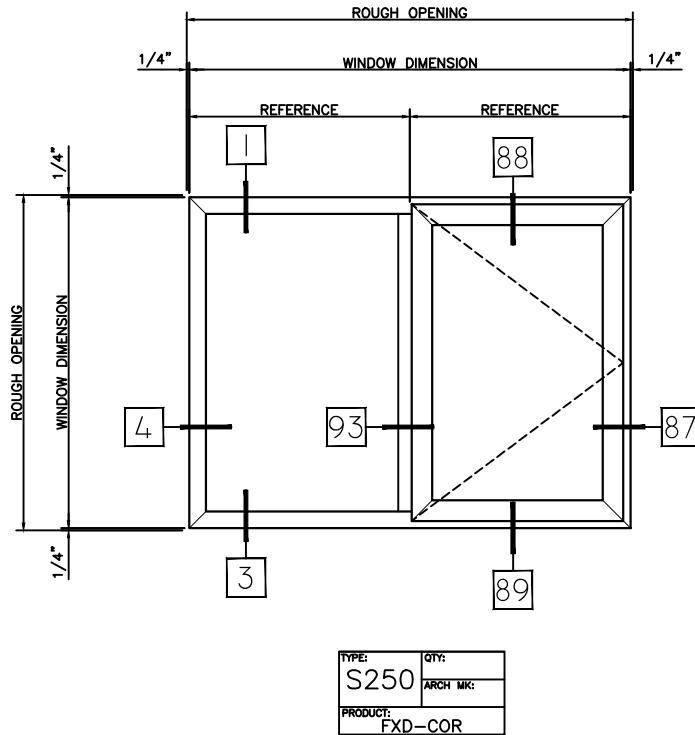
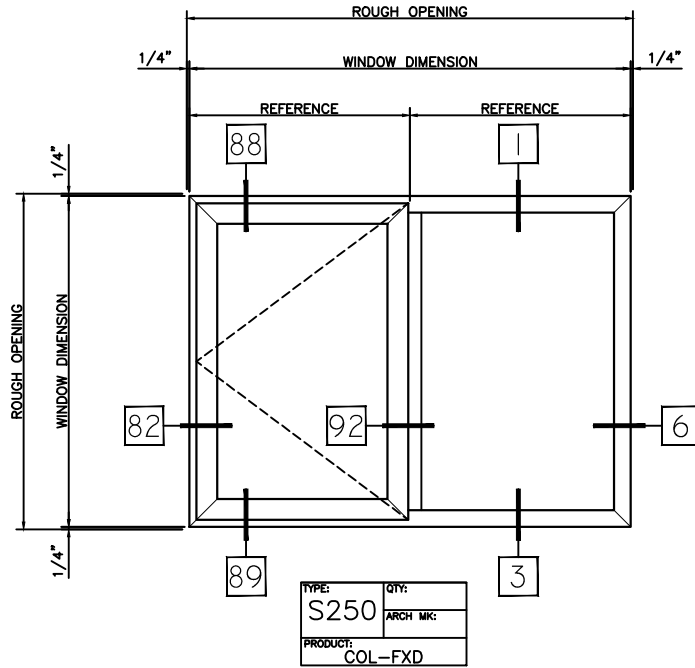
TYPE:	QTY:
S250	ARCH MKG:
PRODUCT:	
COL	

TYPE:	QTY:
S250	ARCH MKG:
PRODUCT:	
COR	



TYPE:	QTY:
S250	ARCH MKG:
PRODUCT:	
COL-COR	

HALF SCALE DETAILS

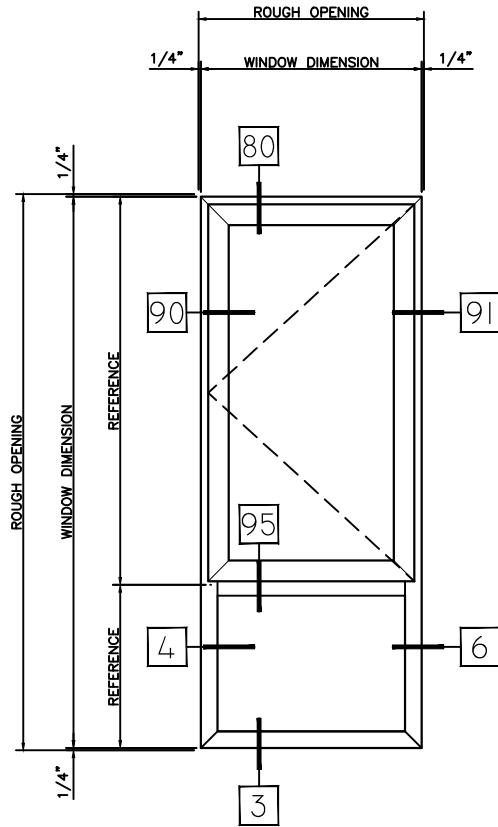


HALF SCALE DETAILS

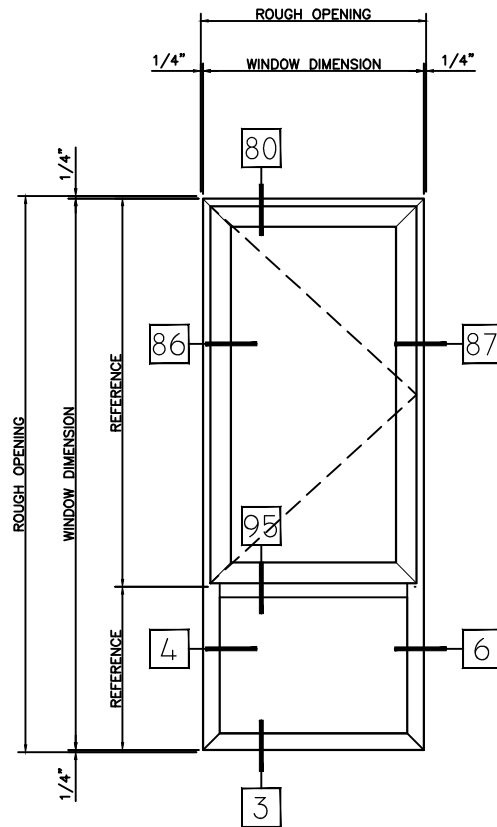
WINTeCH

P.O. BOX 480
 MONETT, MO 65708-0480

P: 417-235-7821
 F: 417-737-7140
 www.wintechinc.com



TYPE:	QTY:
S250	ARCH MK:
PRODUCT:	
COL/FXD	



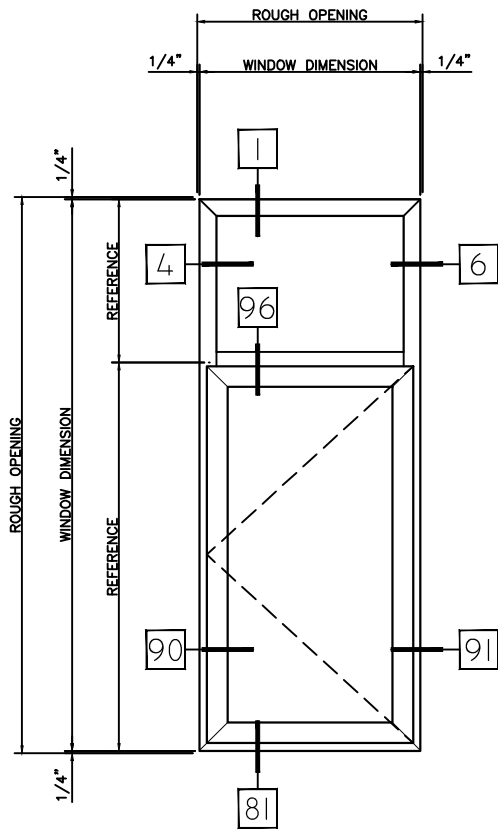
TYPE:	QTY:
S250	ARCH MK:
PRODUCT:	
COR/FXD	

HALF SCALE DETAILS

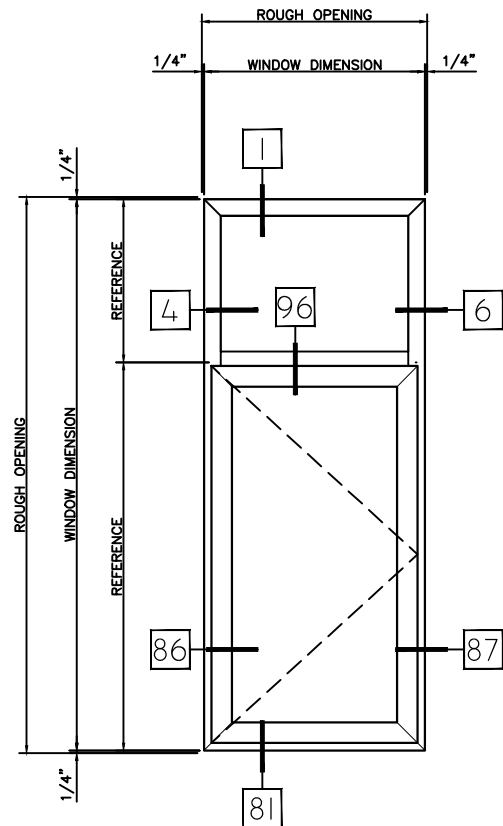
WINTECH

P.O. BOX 480
 MONETT, MO 65708-0480

P: 417-235-7821
 F: 417-737-7140
 www.wintechinc.com



TYPE:	QTY:
S250	ARCH MK:
PRODUCT:	FXD/COL



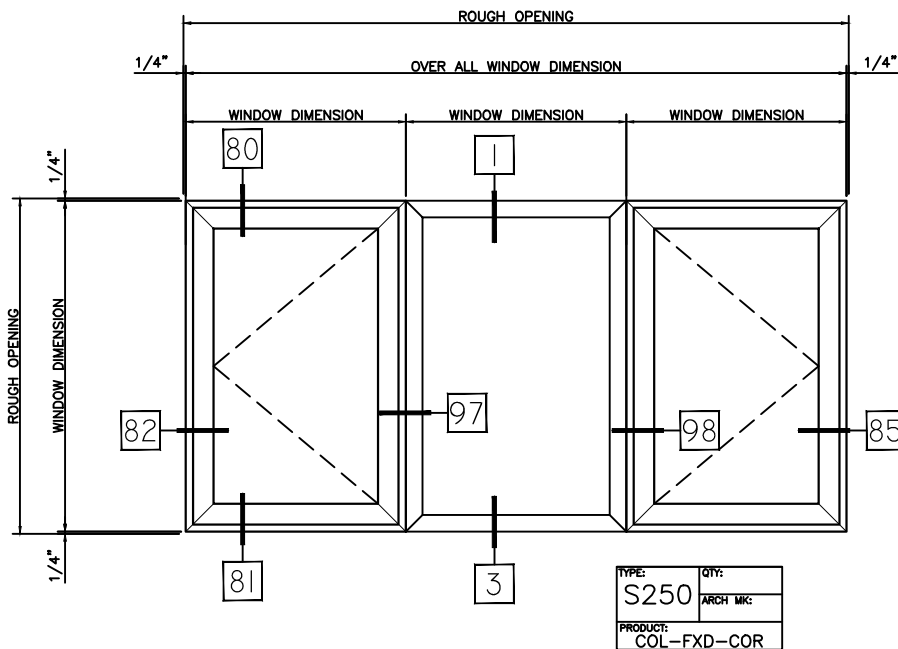
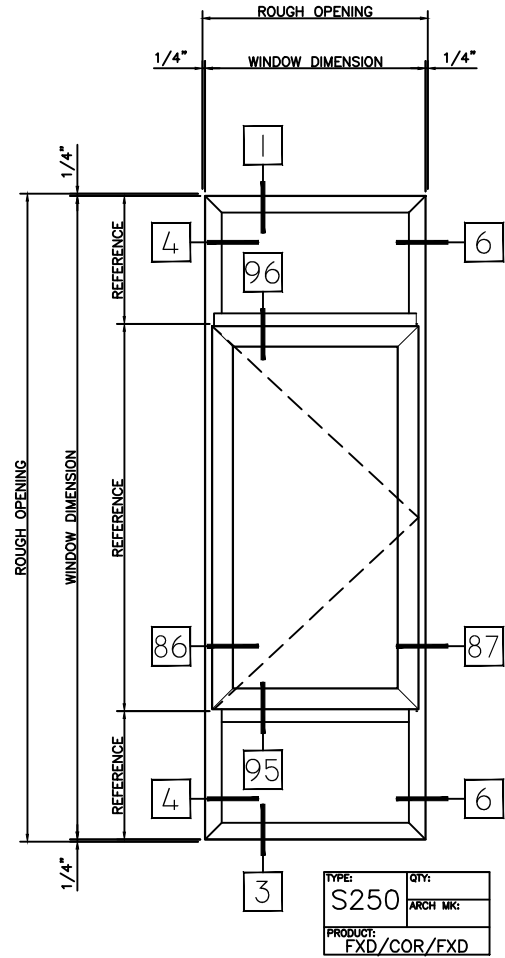
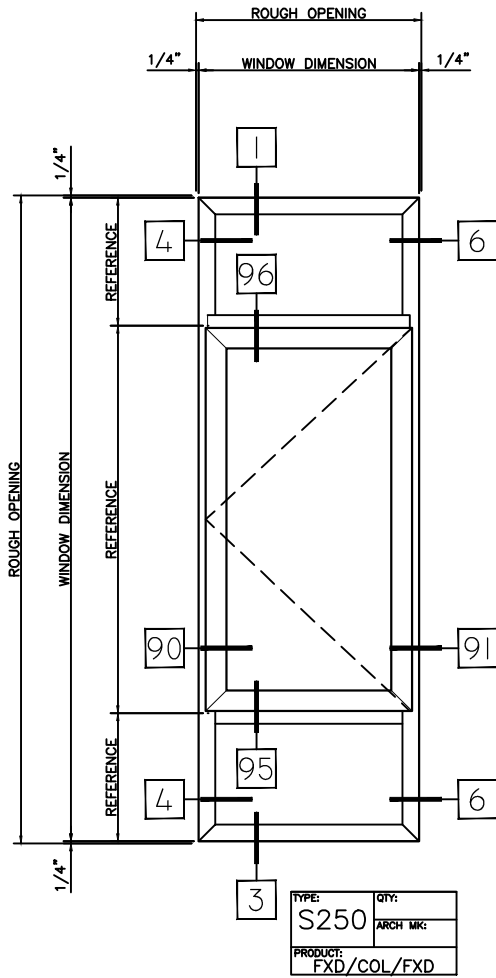
TYPE:	QTY:
S250	ARCH MK:
PRODUCT:	FXD/COR

HALF SCALE DETAILS

WINTECH

P.O. BOX 480
MONETT, MO 65708-0480

P: 417-235-7821
F: 417-737-7140
www.wintechinc.com

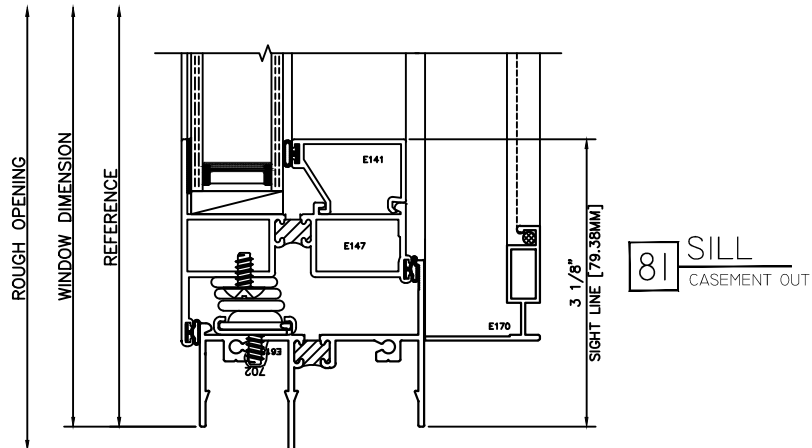
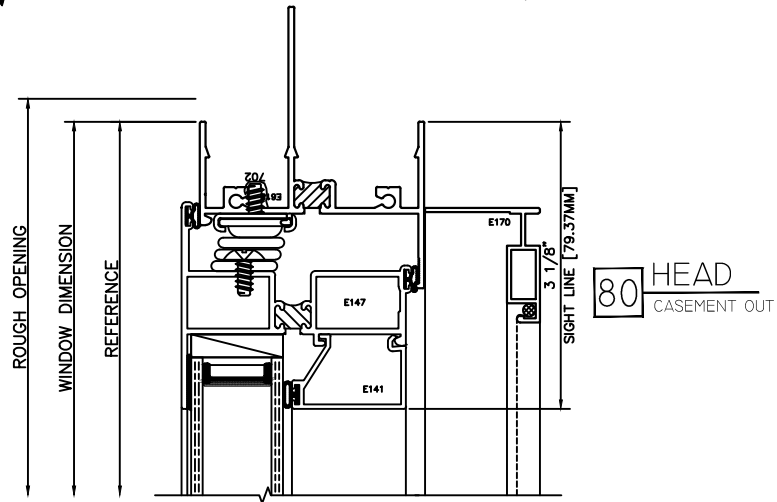


HALF SCALE DETAILS

WINTECH

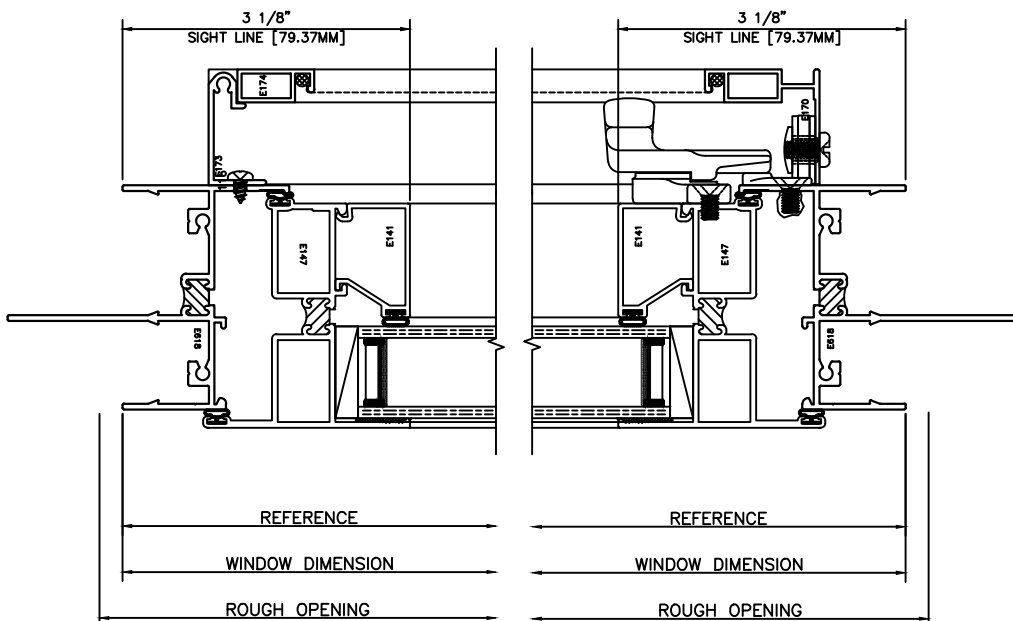
P.O. BOX 480
MONETT, MO 65708-0480

P: 417-235-7821
F: 417-737-7140
www.wintechinc.com



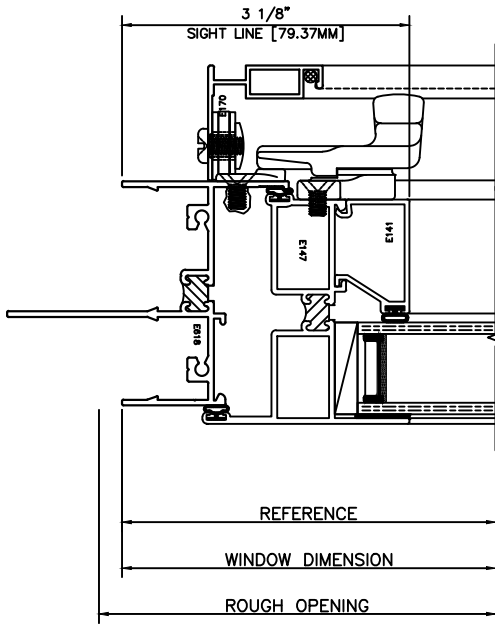
82 JAMB COL-HINGE RAIL

83 JAMB COL-LOCK RAIL

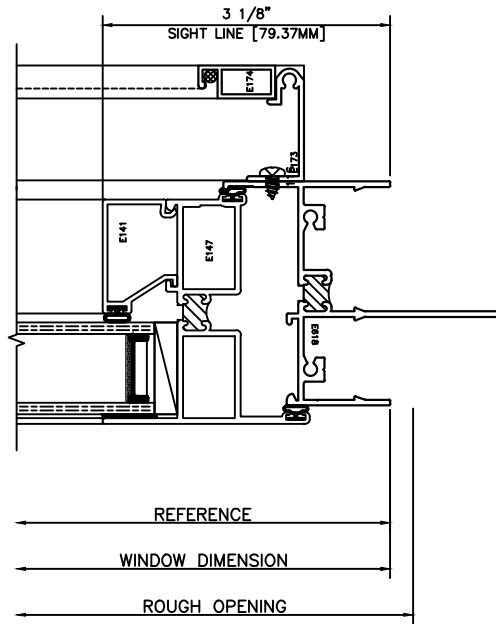


HALF SCALE DETAILS

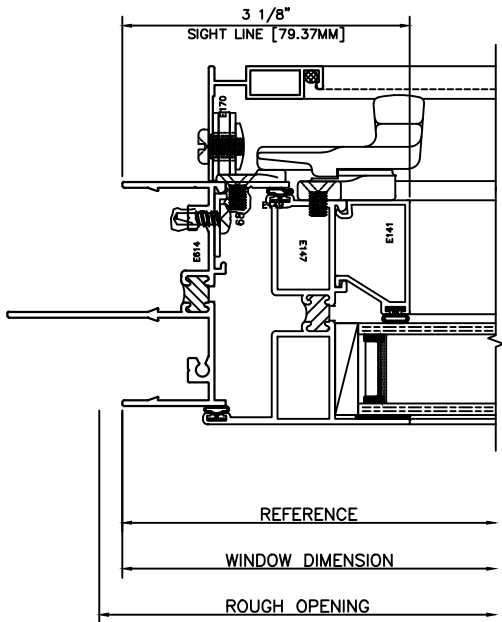
84 JAMB
COR-LOCK RAIL



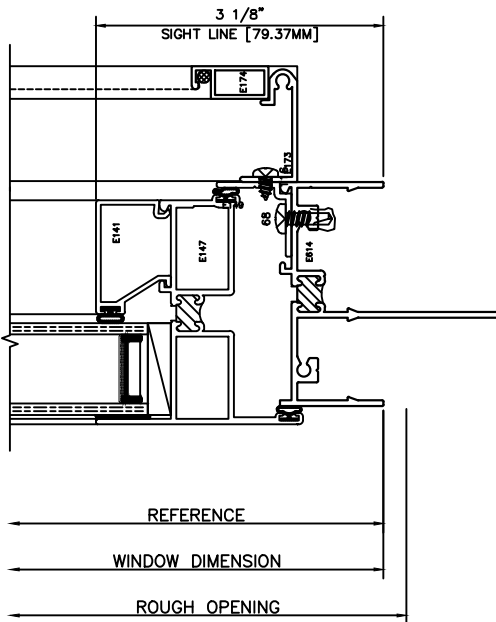
85 JAMB
COR-HINGE RAIL



86 JAMB
COR-LOCK RAIL



87 JAMB
COR-HINGE RAIL

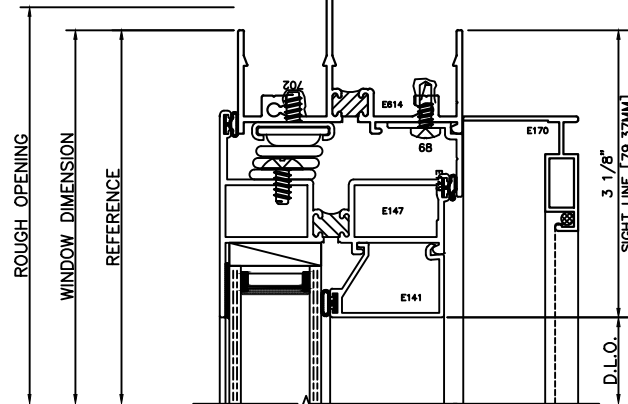


HALF SCALE DETAILS

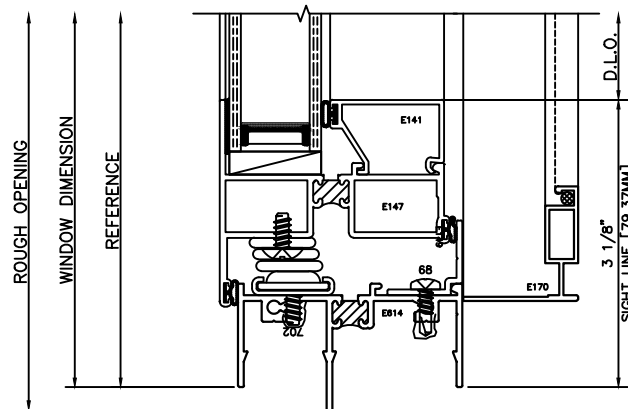
WINTeCH

P.O. BOX 480
MONETT, MO 65708-0480

P: 417-235-7821
F: 417-737-7140
www.wintechinc.com



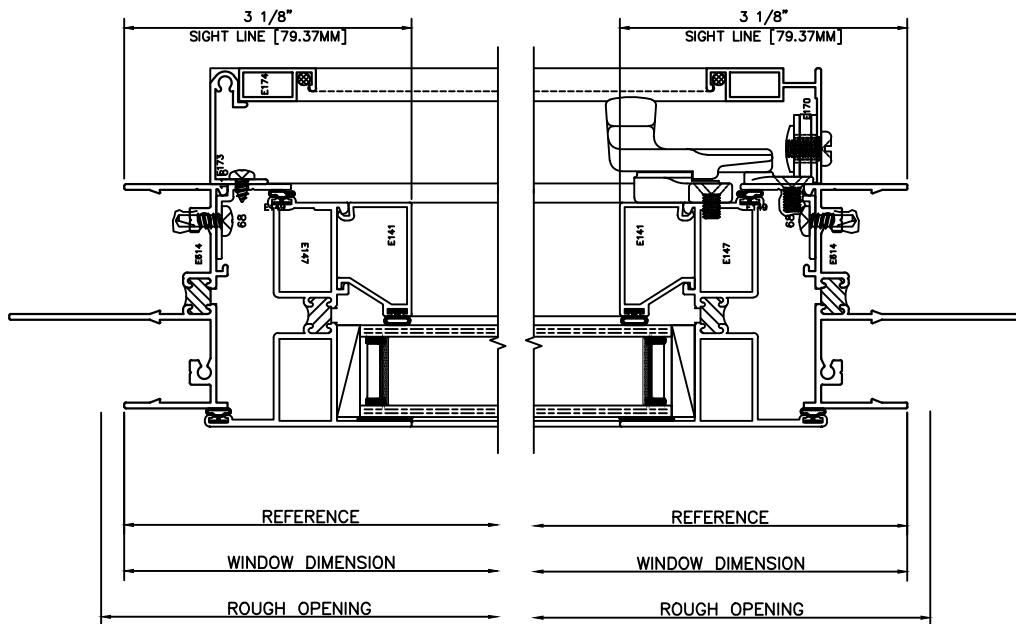
88 HEAD CASEMENT OUT



89 SILL CASEMENT OUT

90 JAMB COL-HINGE RAIL

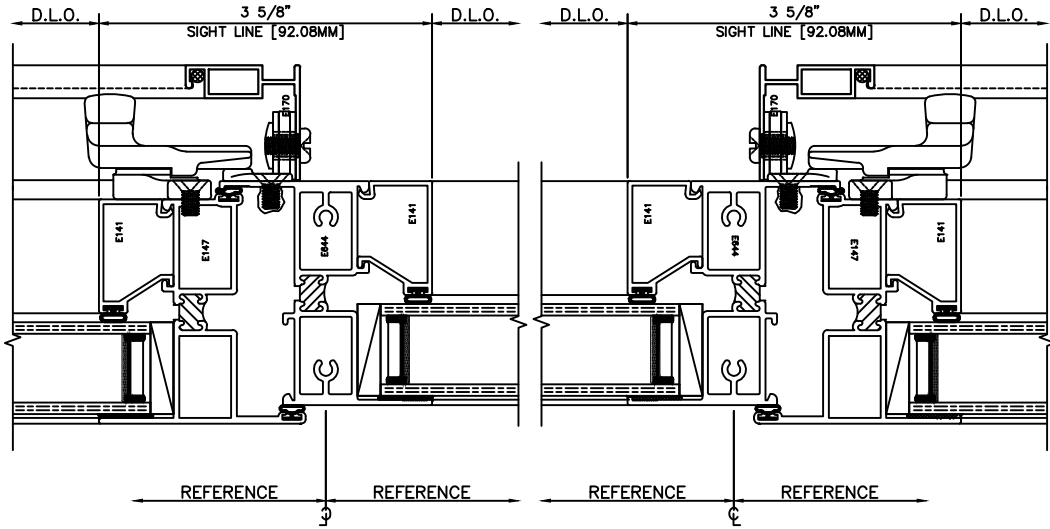
91 JAMB COL-LOCK RAIL



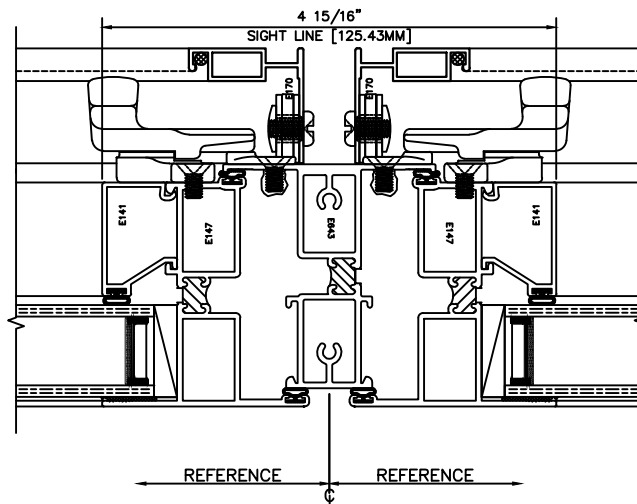
HALF SCALE DETAILS

92 MTG RAIL
COL LOCK RAIL-FXD

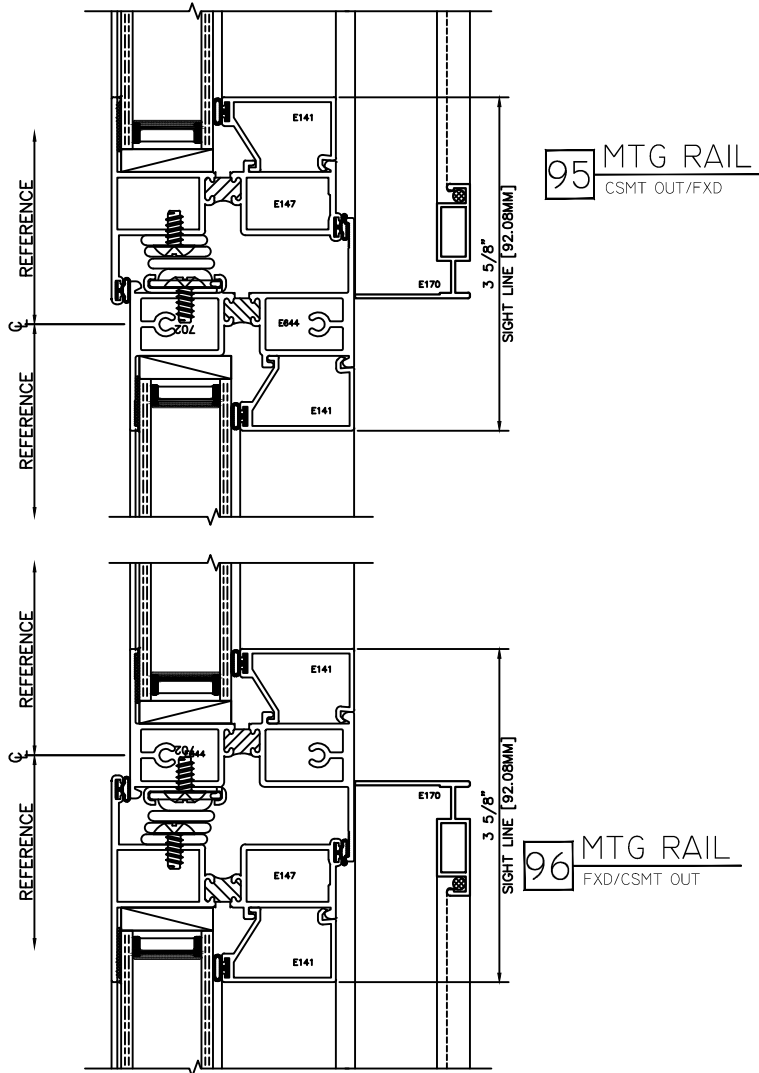
93 MTG RAIL
FXD-COR LOCK RAIL



94 MTG RAIL
COL-COR
LOCK RAIL

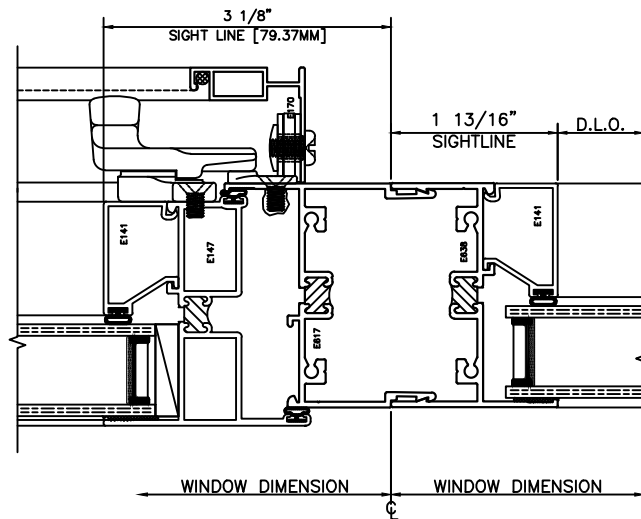


HALF SCALE DETAILS

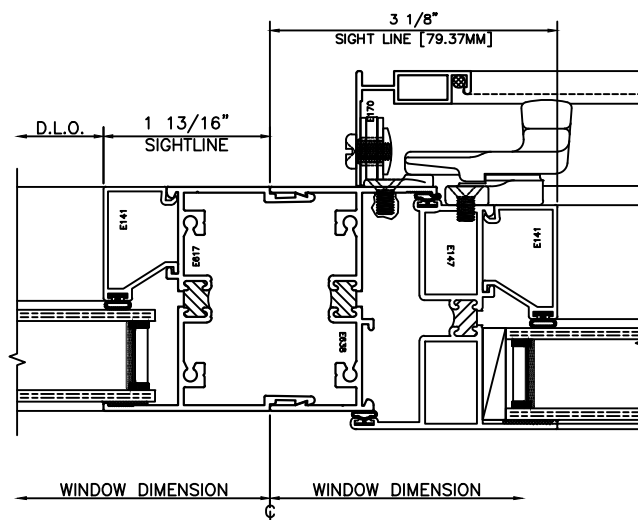


HALF SCALE DETAILS

97 STACK JAMB COL. LOCK RAIL-FIXED



98 STACK JAMB FIXED-COR LOCK RAIL



HALF SCALE DETAILS