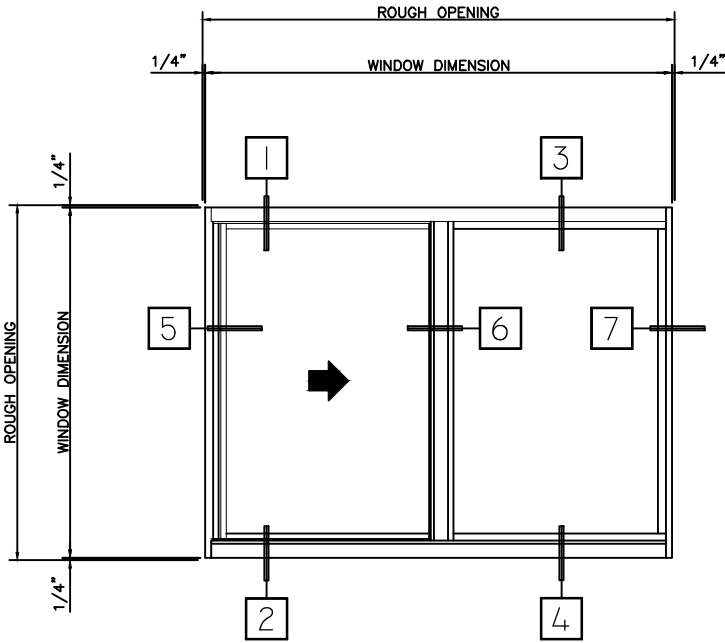
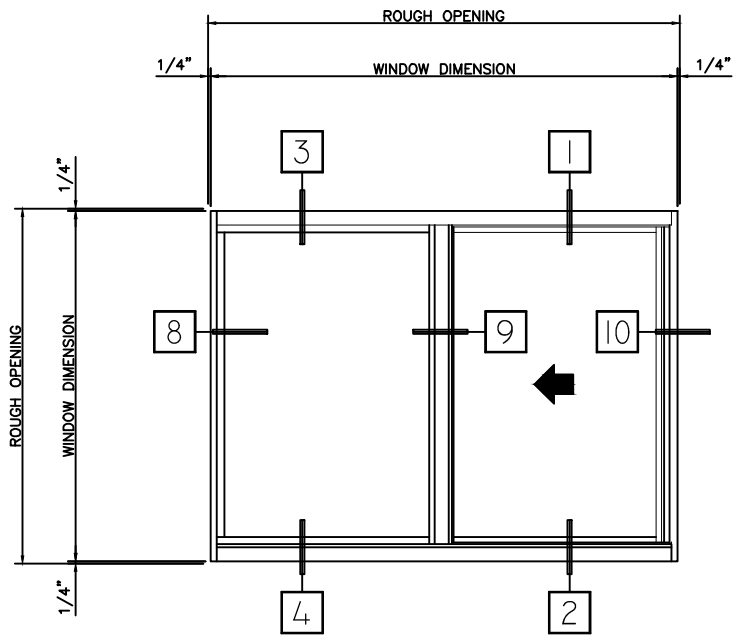


**S250 SLIDER PERFORMANCE DATA:
AAMA/WDMA/CSA 101/I.S.2/A440-08
AAMA/WDMA/CSA 101/I.S.2/A440-11**

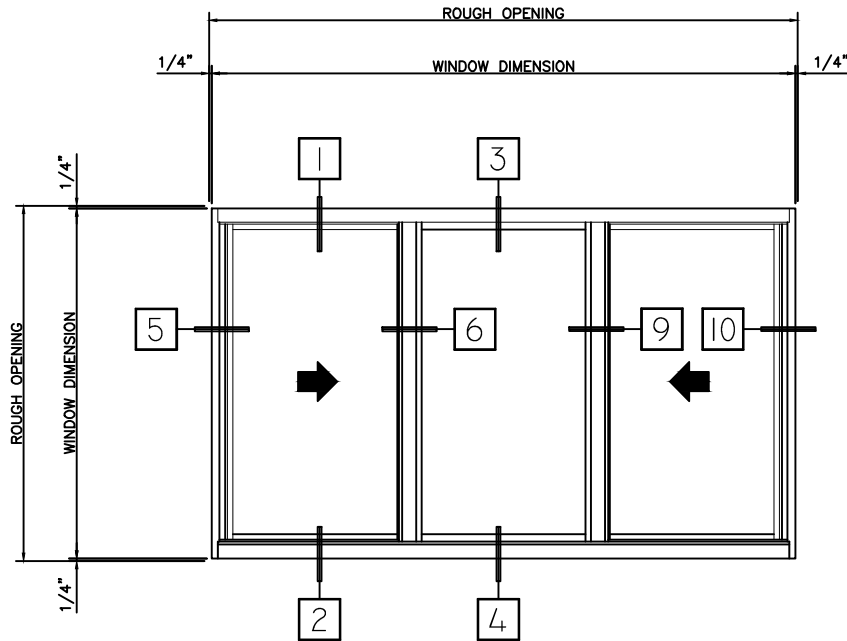
Rating	LC-PG30 Type HS
Air Infiltration	<0.25 cfm/ft @ 1.62 psf
Water Resistance	0 Leakage @ 4.59 lb/sf
Structural Performance	45.11 psf
Thermally Broken	Yes
Frame Depth	2-1/2"
Infill Options	Maximum 5/8"



TYPE:	QTY:
S250	ARCH MK:
PRODUCT:	
HORIZ SLIDER	
XO	

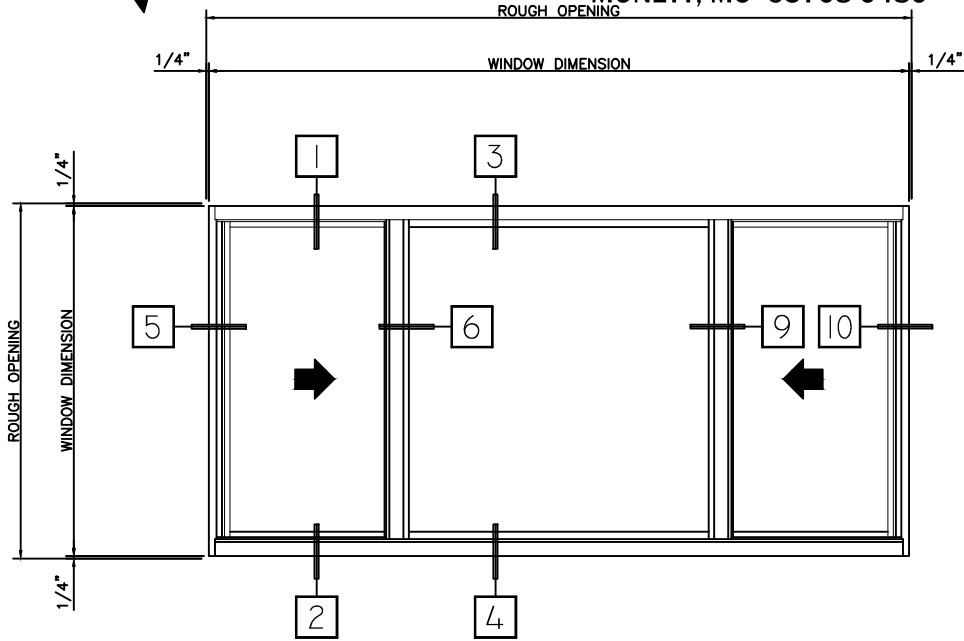


TYPE:	QTY:
S250	ARCH MK:
PRODUCT:	
HORIZ SLIDER	
OX	

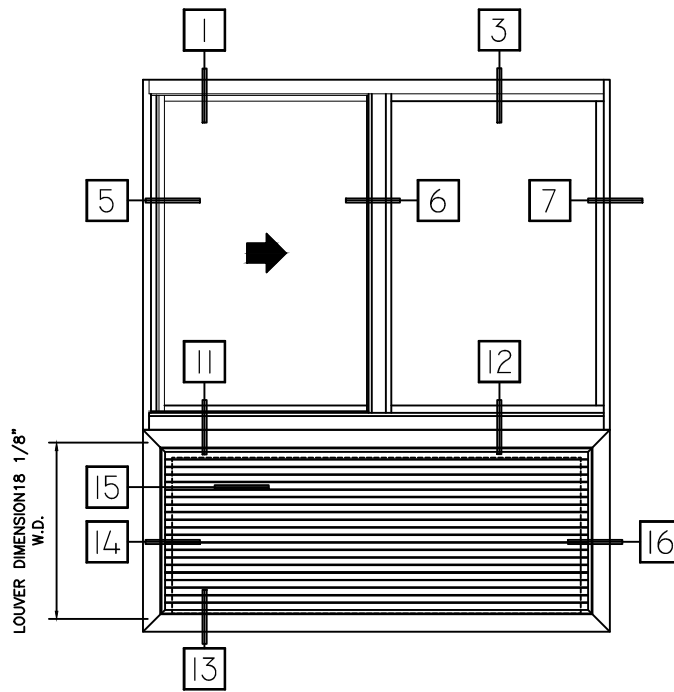


TYPE:	QTY:
S250	ARCH MK:
PRODUCT:	
HORIZ SLIDER	
XOX W/EQUAL LITES	

HALF SCALE DETAILS

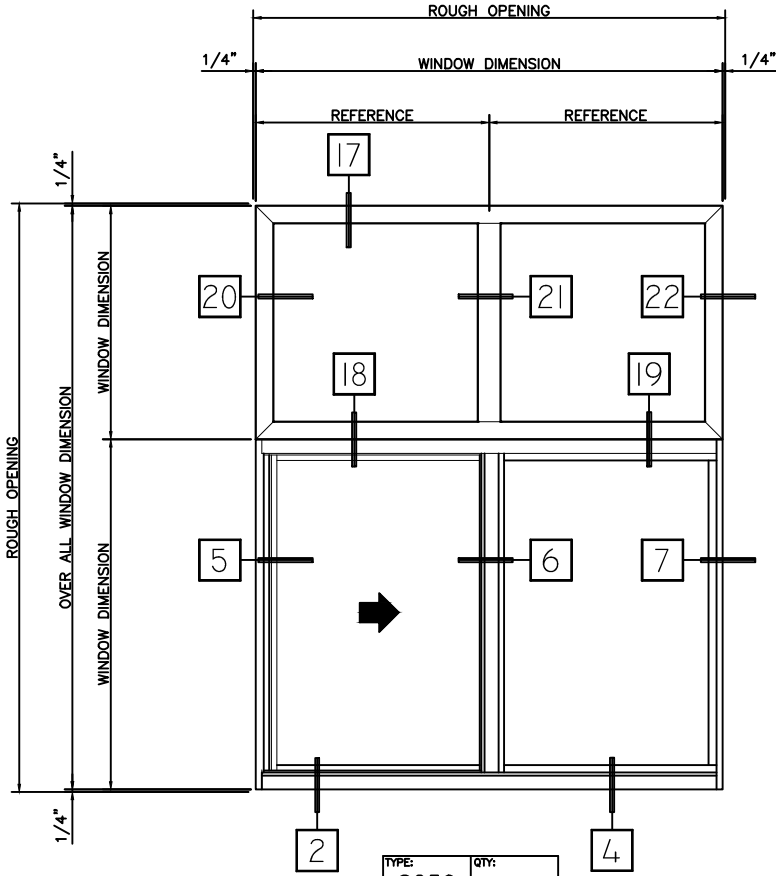


TYPE: S250	QTY:
	ARCH MK:
PRODUCT: HORIZ SLIDER	
XOX W/ "X" DIMENSION	

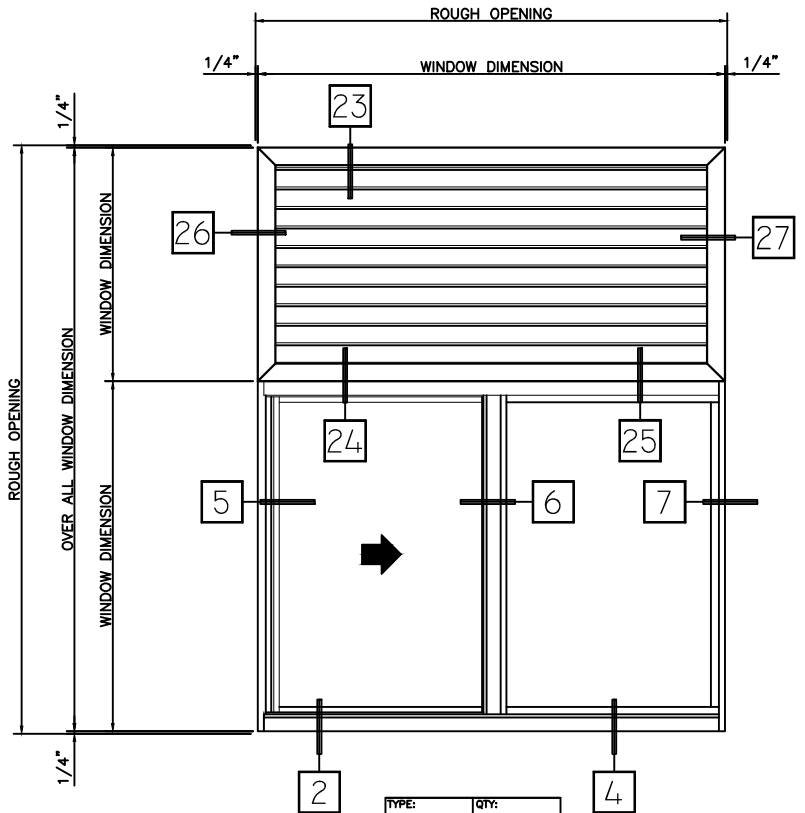


TYPE: S250	QTY:
	ARCH MK:
PRODUCT: HORIZ SLIDER	
XO/PTAC UNIT	

HALF SCALE DETAILS

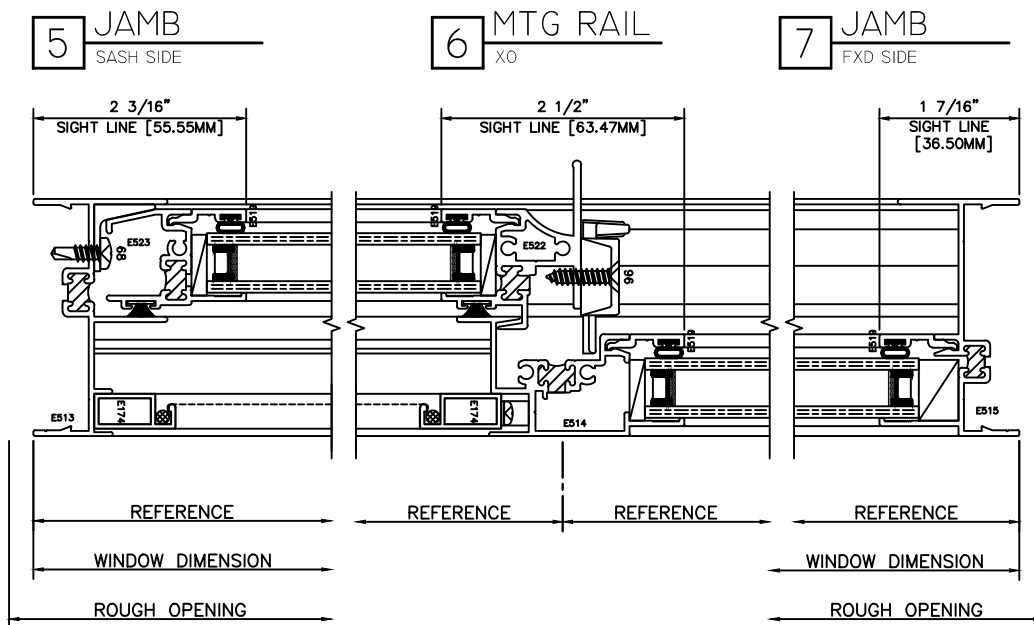
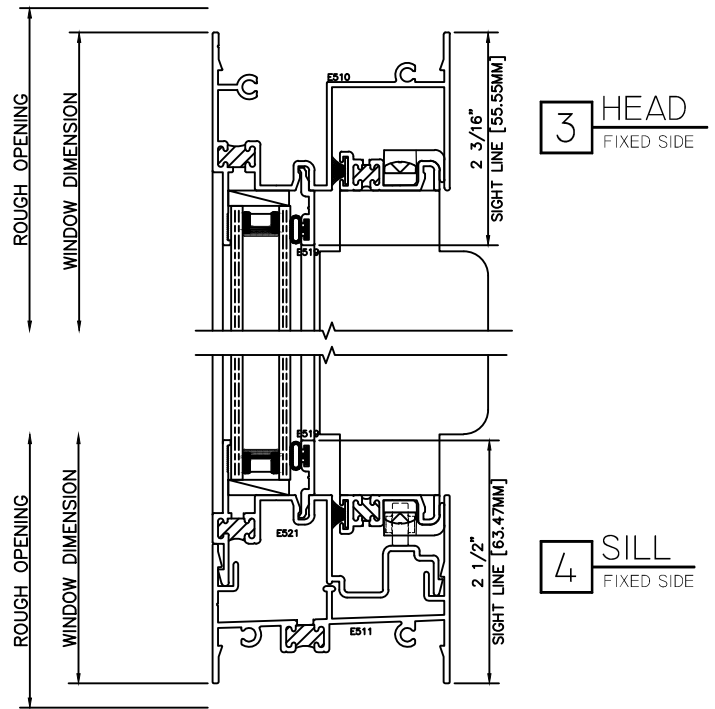
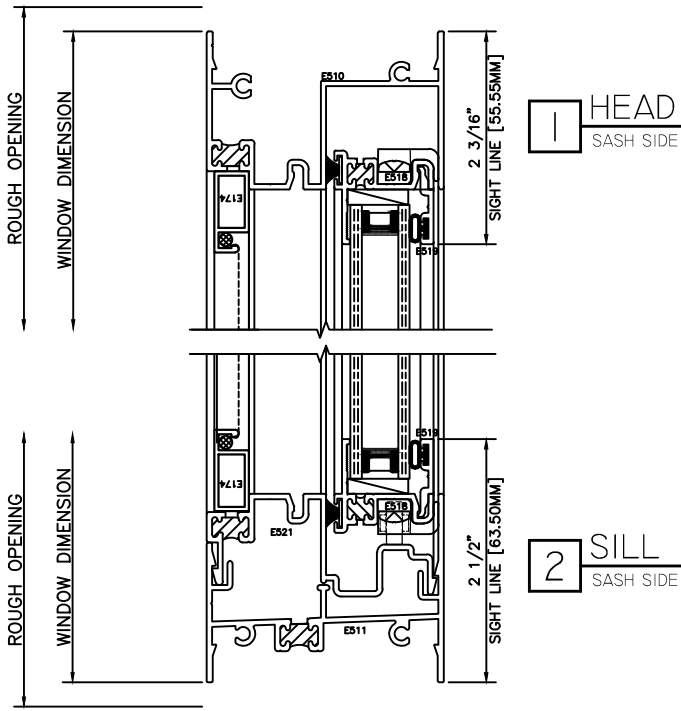


TYPE:	QTY:
S250	
ARCH MK:	
PRODUCT:	
FIXED UNIT	
HORIZ SLIDER	



TYPE:	QTY:
S250	
ARCH MK:	
PRODUCT:	
FIXED LOUVER	
HORIZ SLIDER	

HALF SCALE DETAILS

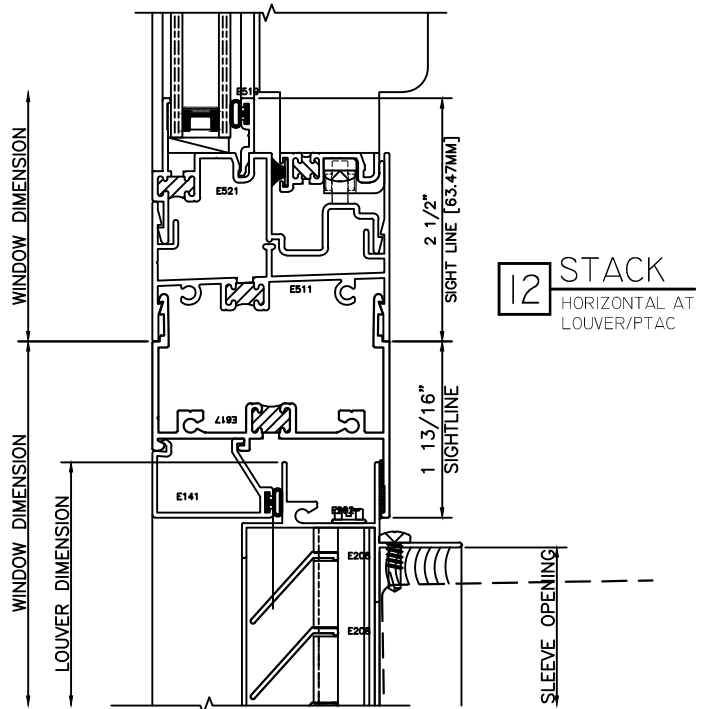
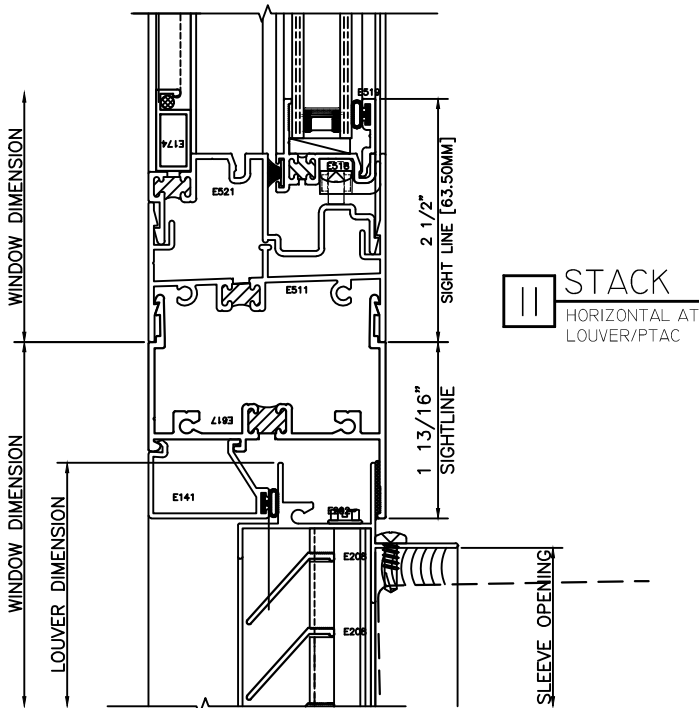
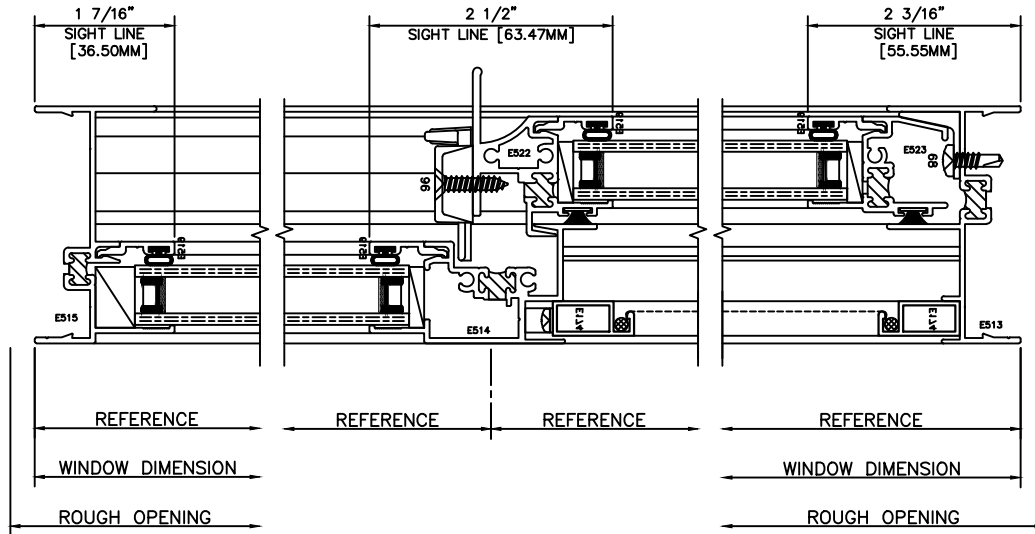


HALF SCALE DETAILS

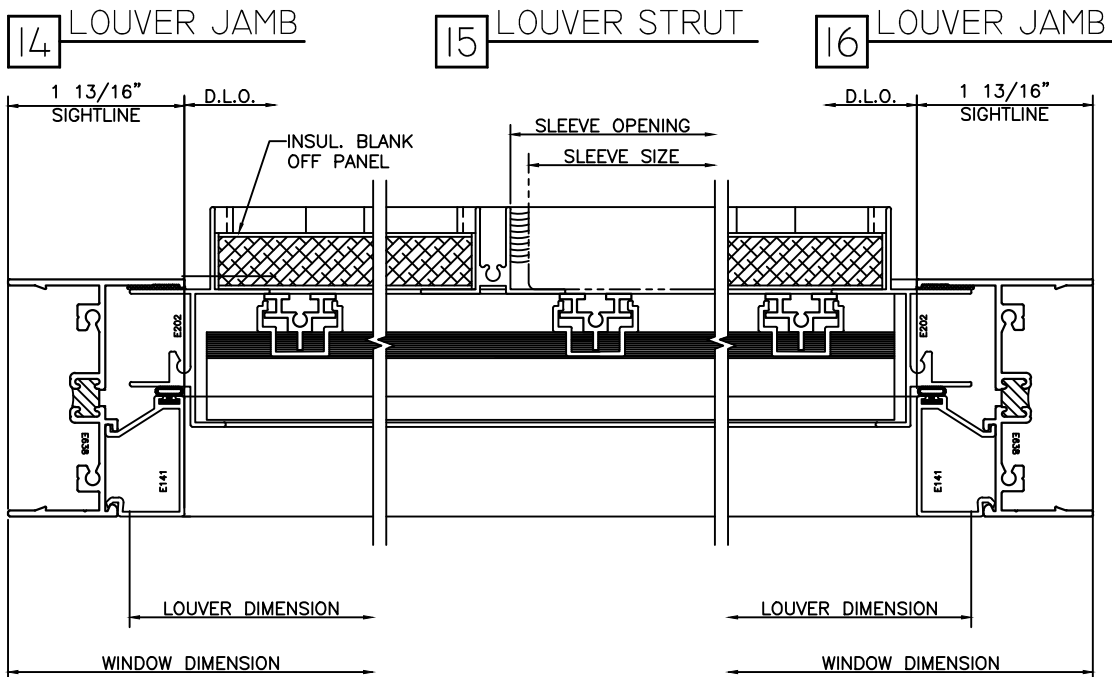
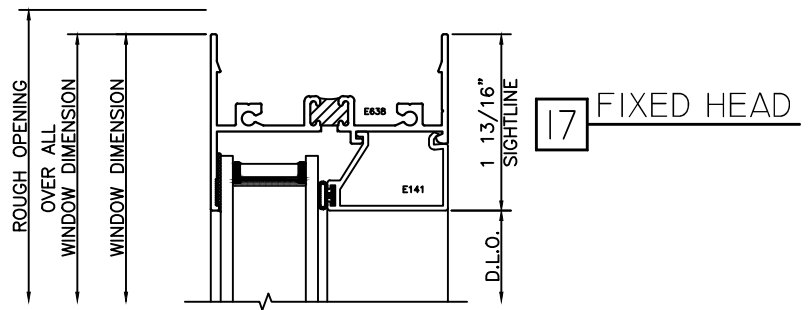
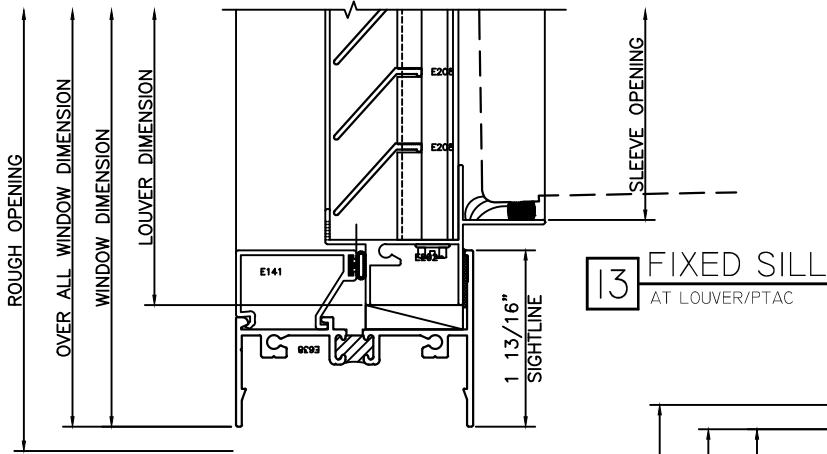
8 JAMB
FXD SIDE

9 MTG RAIL
OX

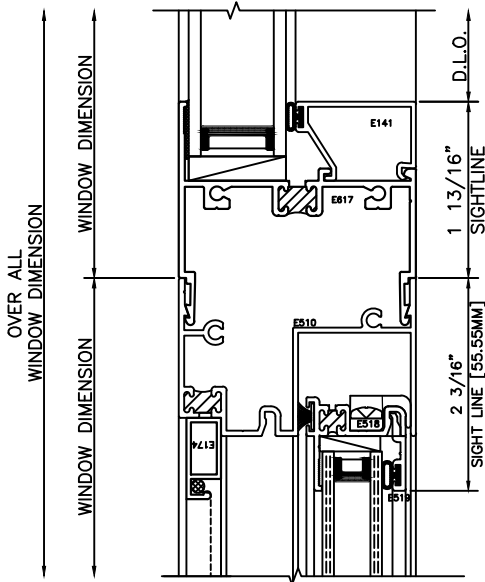
10 JAMB
SASH SIDE



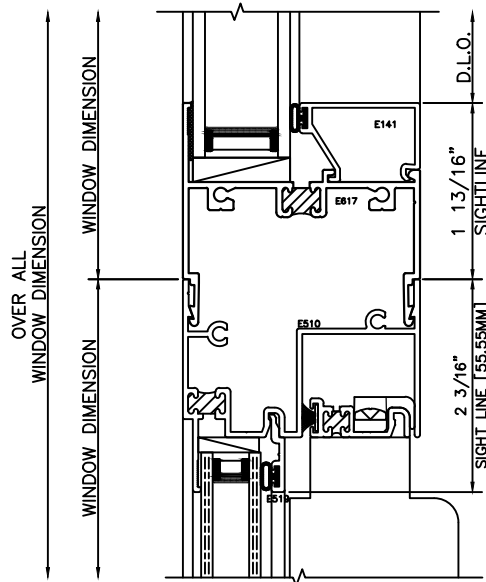
HALF SCALE DETAILS



HALF SCALE DETAILS

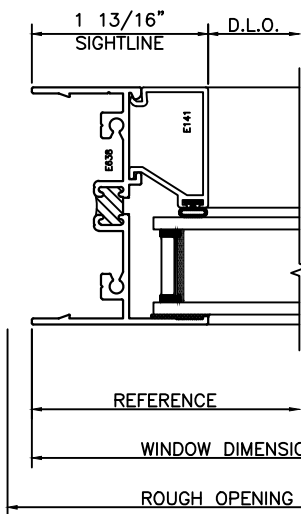


18 STACK
HORIZONTAL AT
TRANSOME

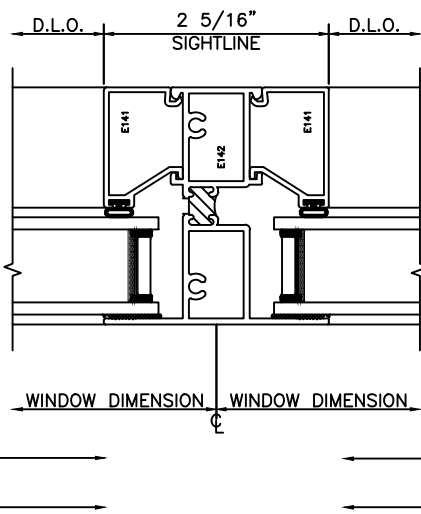


19 STACK
HORIZONTAL AT
TRANSOME

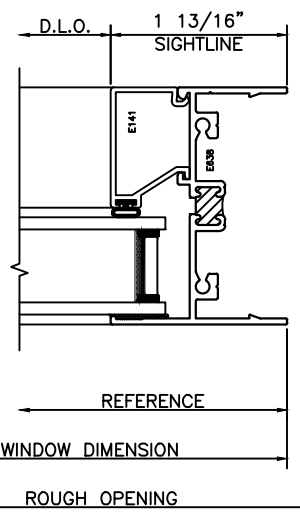
20 FIXED JAMB



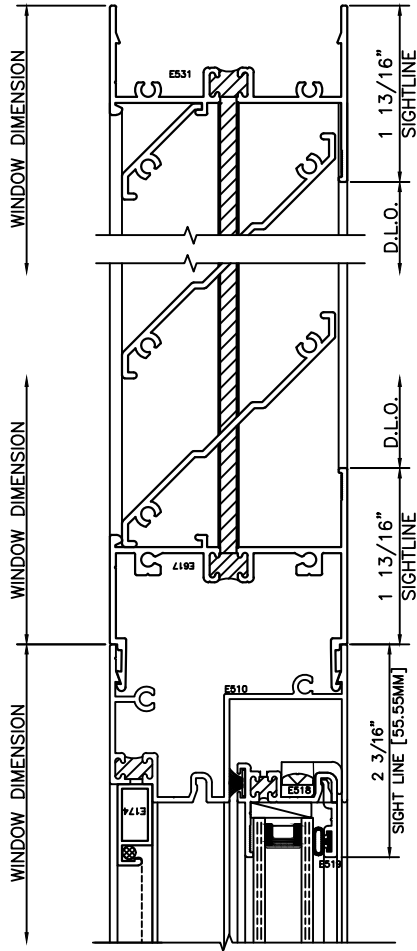
21 VERT. MUNTIN



22 FIXED JAMB

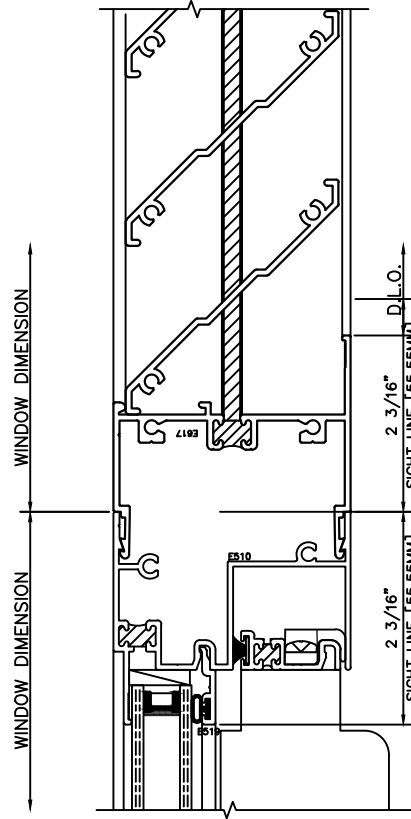


HALF SCALE DETAILS



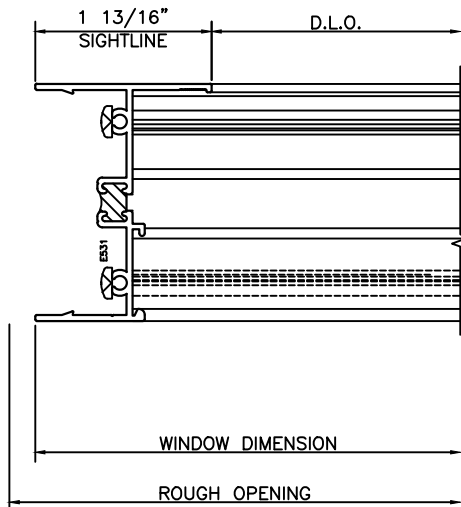
23 FIXED HEAD
AT O.G. LOUVER

24 STACK
SASH SIDE
OVER LOUVER

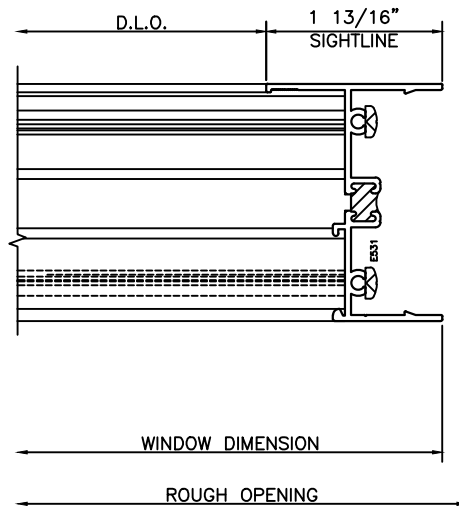


25 STACK
FIXED SIDE
OVER LOUVER

26 FIXED JAMB
AT O.G. LOUVER



27 FIXED JAMB
AT O.G. LOUVER



HALF SCALE DETAILS