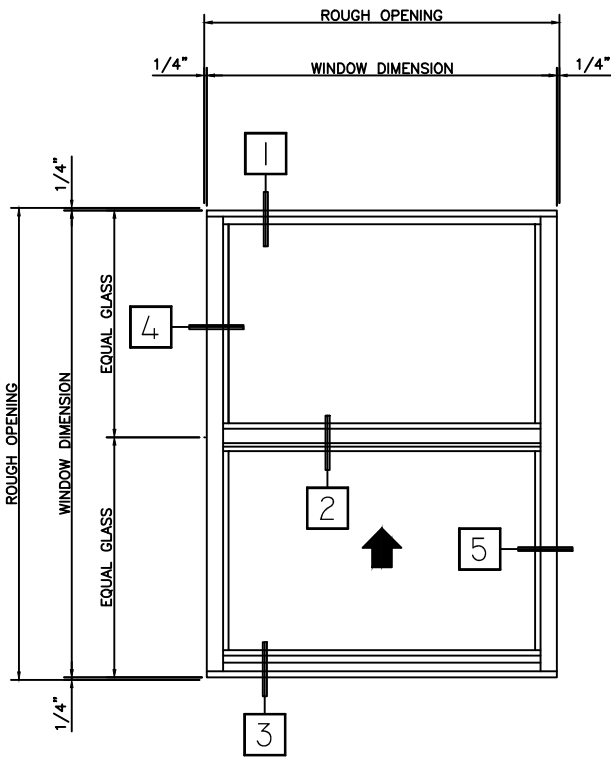
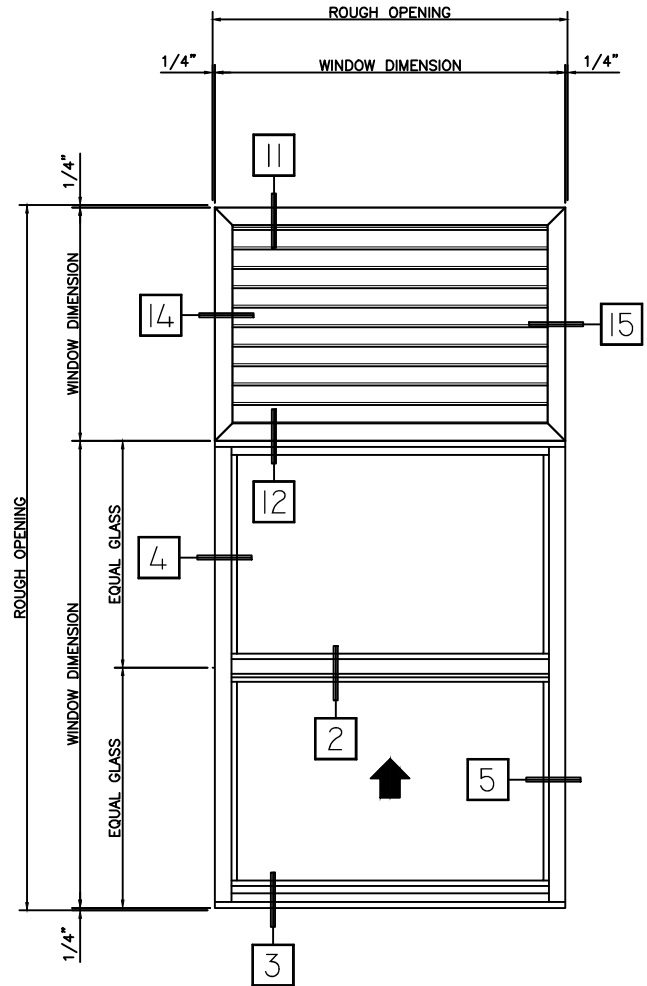


**S250 SINGLE HUNG PERFORMANCE DATA:
AAMA/WDMA/CSA 101/I.S.2/A440-08
AAMA/WDMA/CSA 101/I.S.2/A440-11**

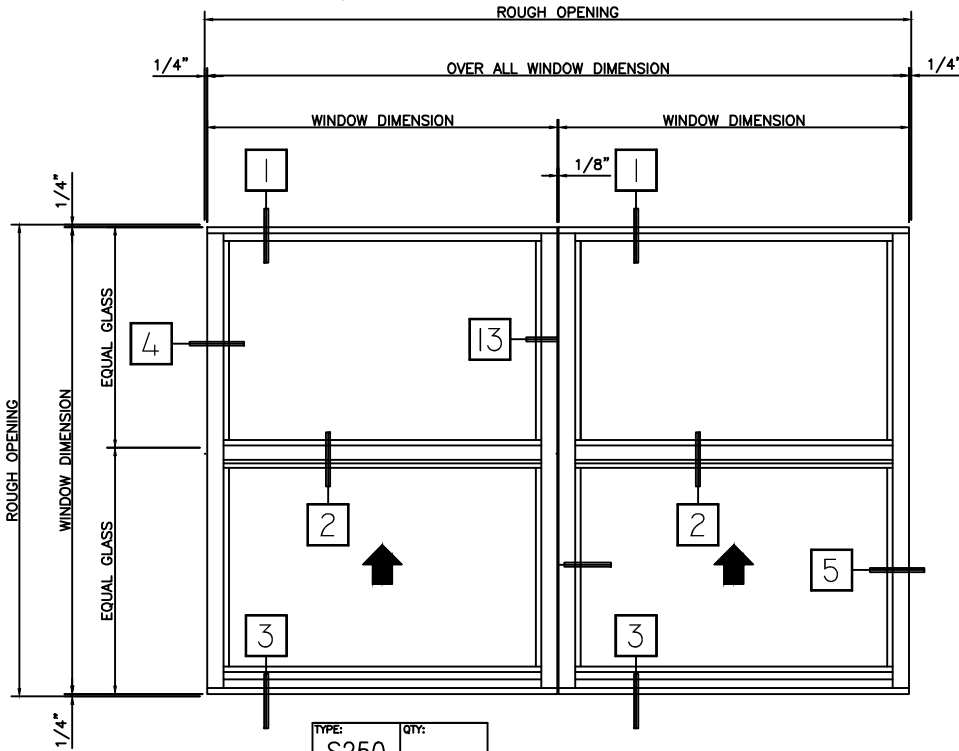
Rating	LC-PG35 Type H
Air Infiltration	<0.11 cfm/ft @ 1.62 psf
Water Resistance	0 Leakage @ 5.43 lb/sf
Structural Performance	52.63 psf
Thermally Broken	Yes
Frame Depth	2-1/2"
Infill Options	Maximum 5/8"



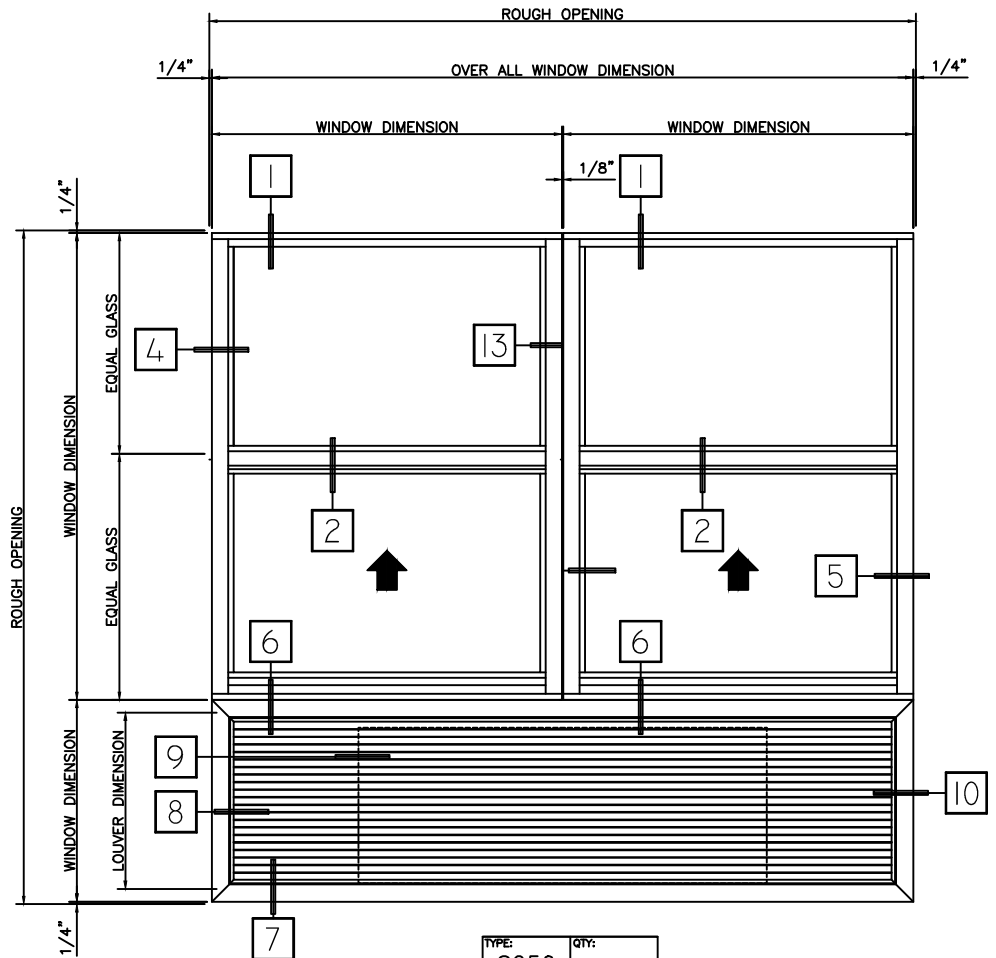
TYPE:	QTY:
S250	ARCH MK:
PRODUCT:	
SINGLE HUNG	



TYPE:	QTY:
S250	ARCH MK:
PRODUCT:	
LOUVER	
SINGLE HUNG	



TYPE:	QTY:
S250	ARCH MK:
PRODUCT:	
TWIN SINGLE HUNG	



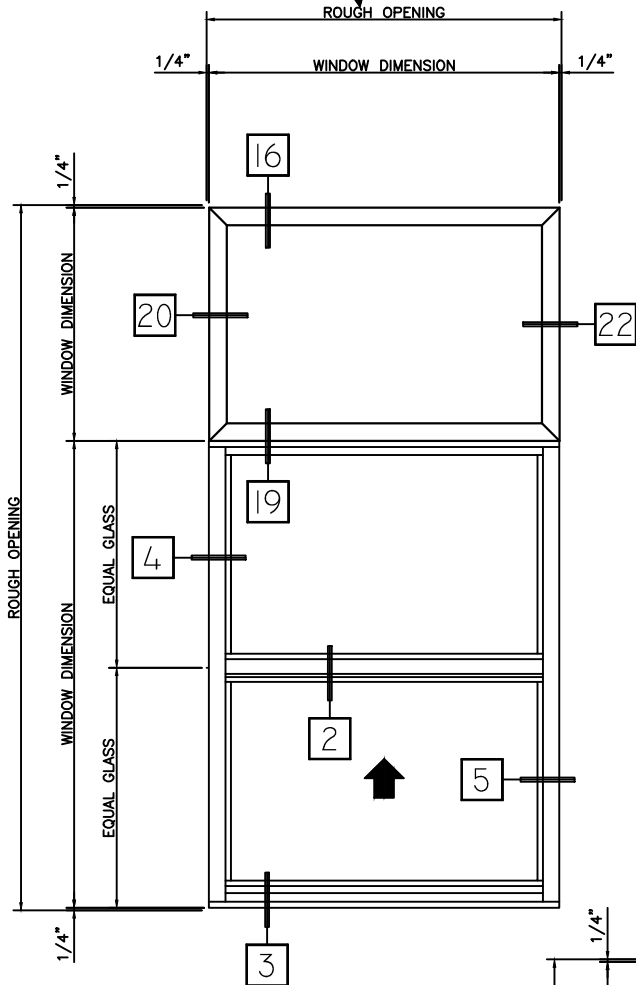
TYPE:	QTY:
S250	ARCH MK:
PRODUCT:	
TWIN SINGLE HUNG	
XO/PTAC UNIT	

HALF SCALE DETAILS

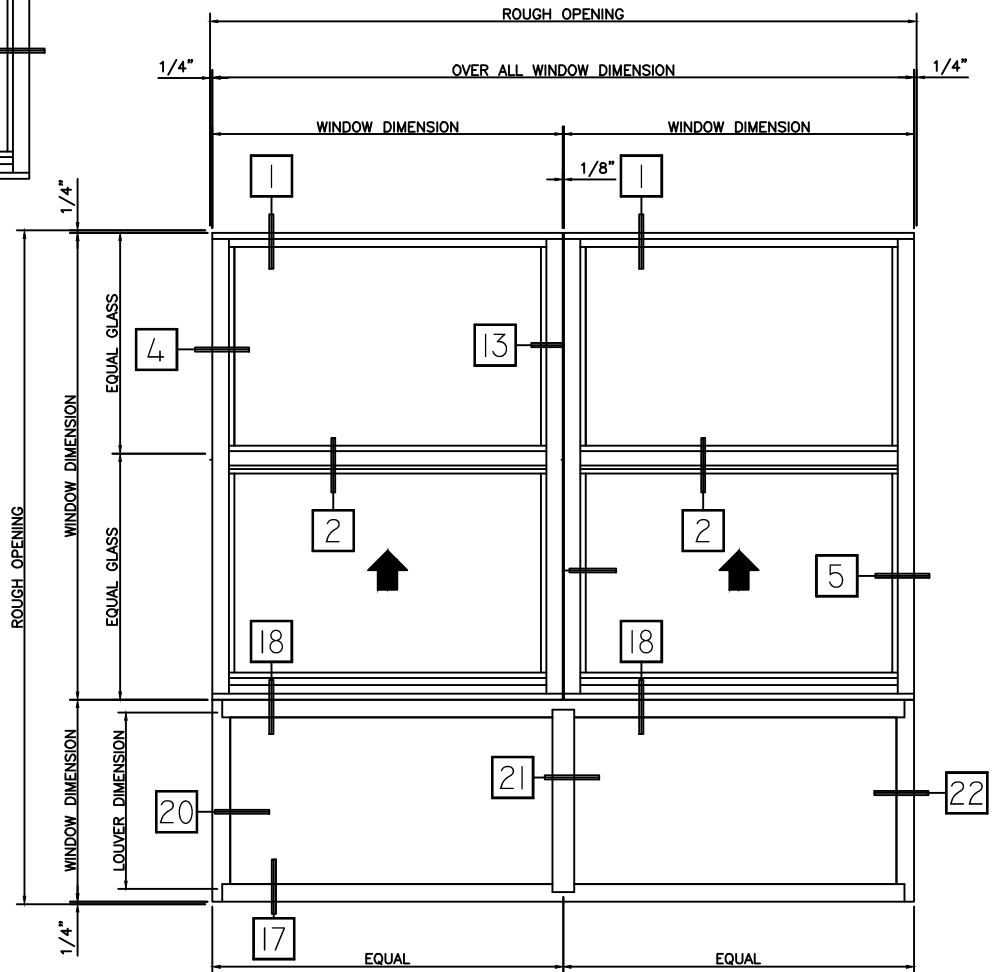
WINTECH

P.O. BOX 480
MONETT, MO 65708-0480

P: 417-235-7821
F: 417-737-7140
www.wintechinc.com



TYPE: S250	QTY:
ARCH MK:	
PRODUCT: LOUVER	
SINGLE HUNG	



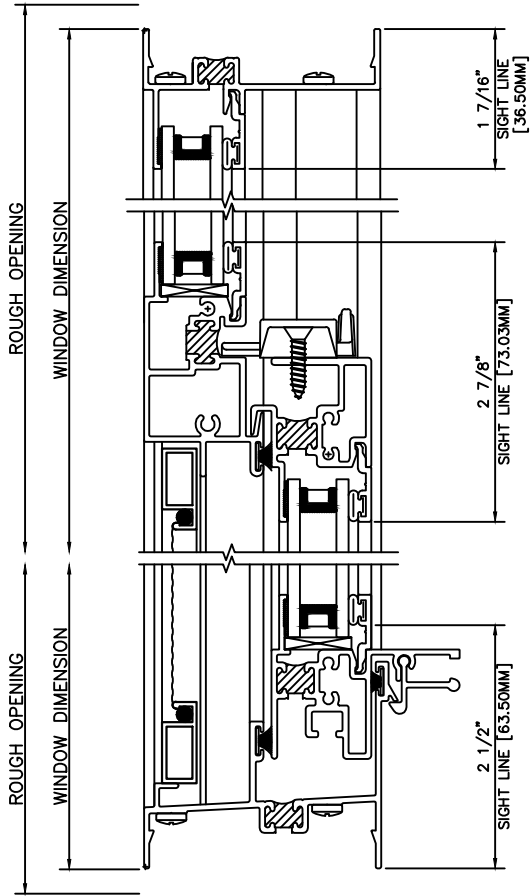
TYPE: S250	QTY:
ARCH MK:	
PRODUCT: TWIN SINGLE HUNG	
XO/PTAC UNIT	

HALF SCALE DETAILS

WINTeCH

P.O. BOX 480
MONETT, MO 65708-0480

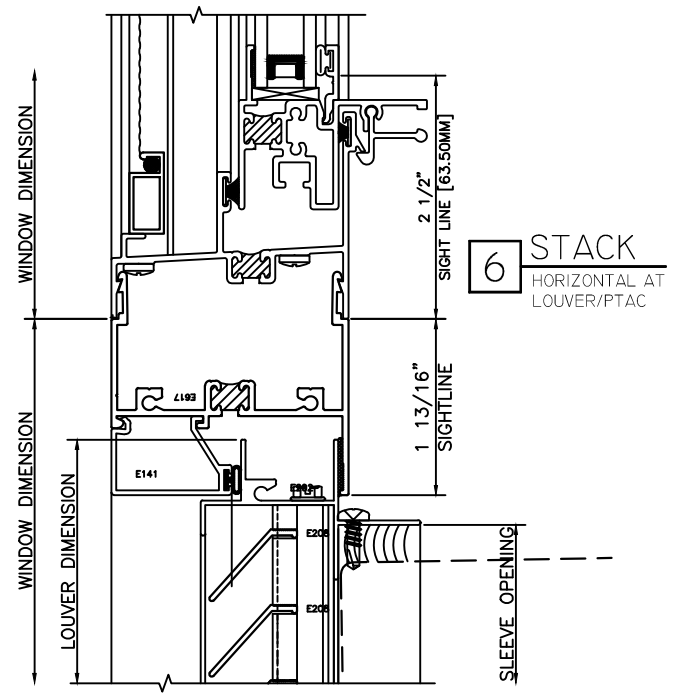
P: 417-235-7821
F: 417-737-7140
www.wintechinc.com



1 HEAD

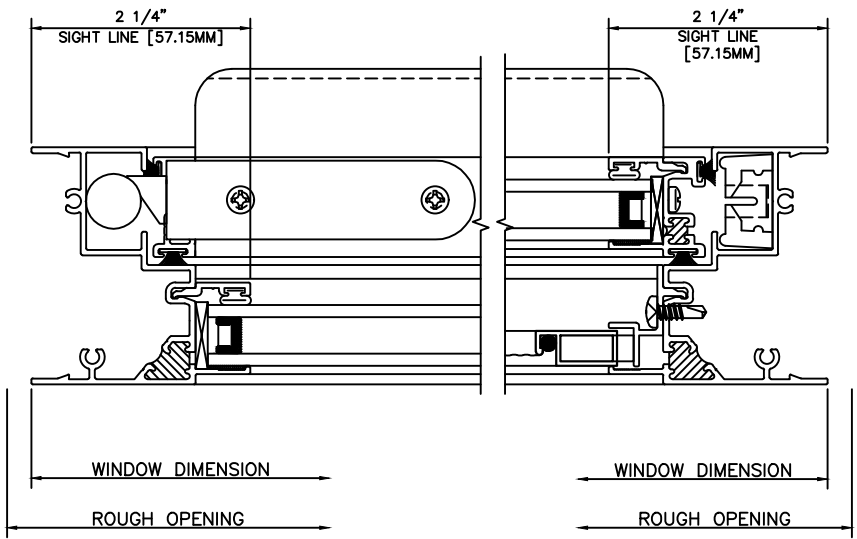
2 MTG RAIL

3 SILL



4 JAMB
FIXED LITE

5 JAMB
SASH LITE

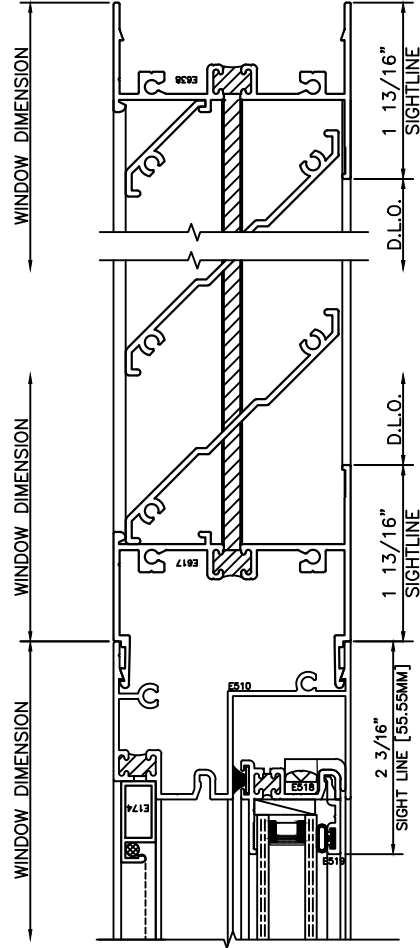
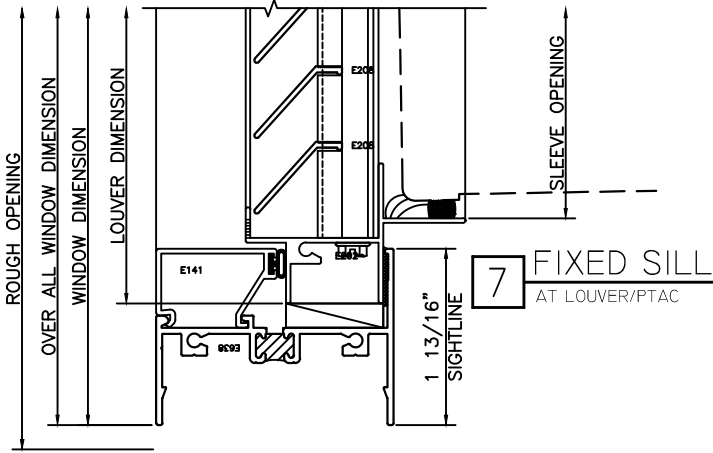


HALF SCALE DETAILS

WINTTECH

P.O. BOX 480
MONETT, MO 65708-0480

P: 417-235-7821
F: 417-737-7140
www.wintechinc.com



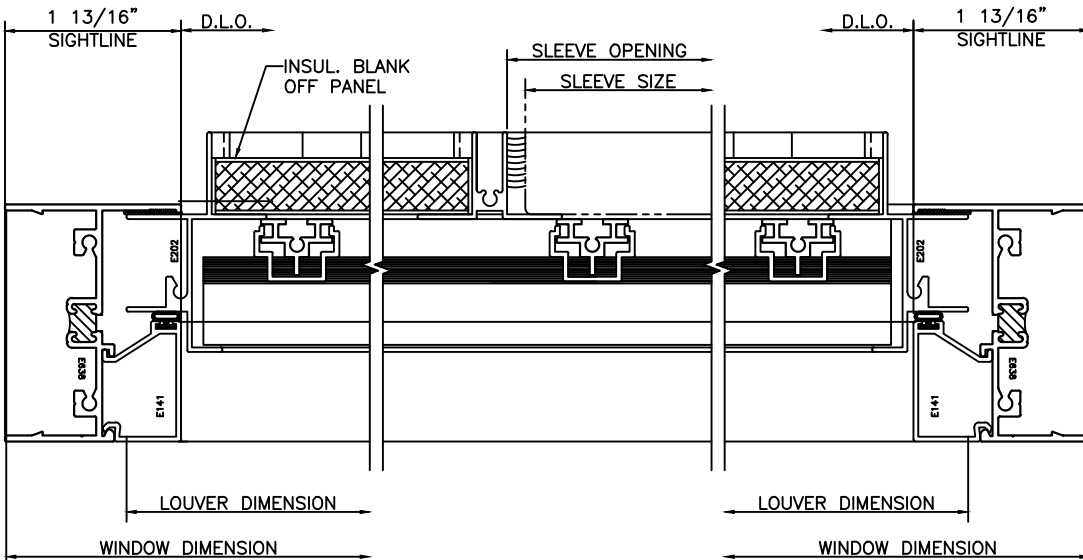
11 FIXED HEAD
AT O.G. LOUVER

12 STACK
SASH SIDE
OVER LOUVER

8 LOUVER JAMB

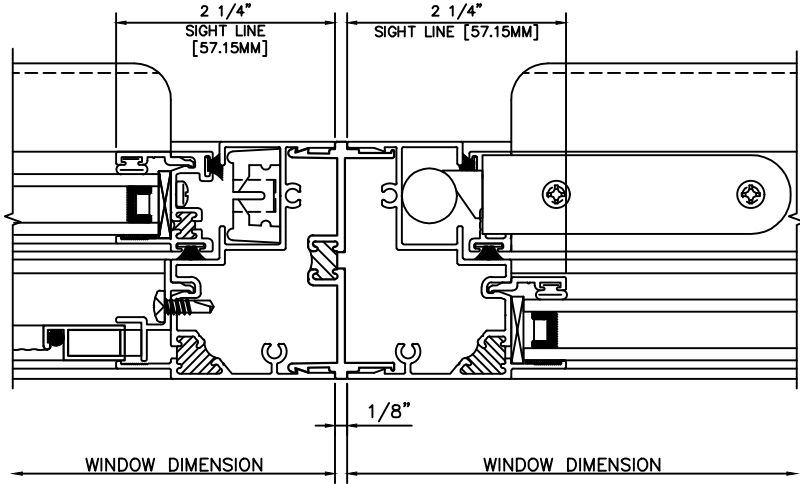
9 LOUVER STRUT

10 LOUVER JAMB

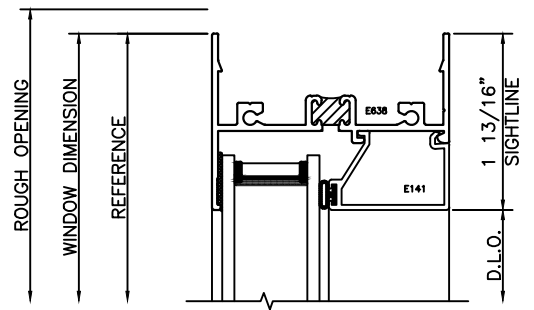


HALF SCALE DETAILS

13 MULLION
TWINNING STACK

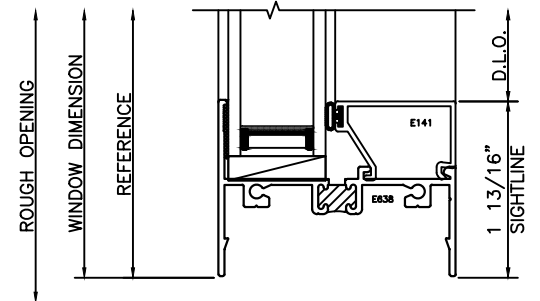
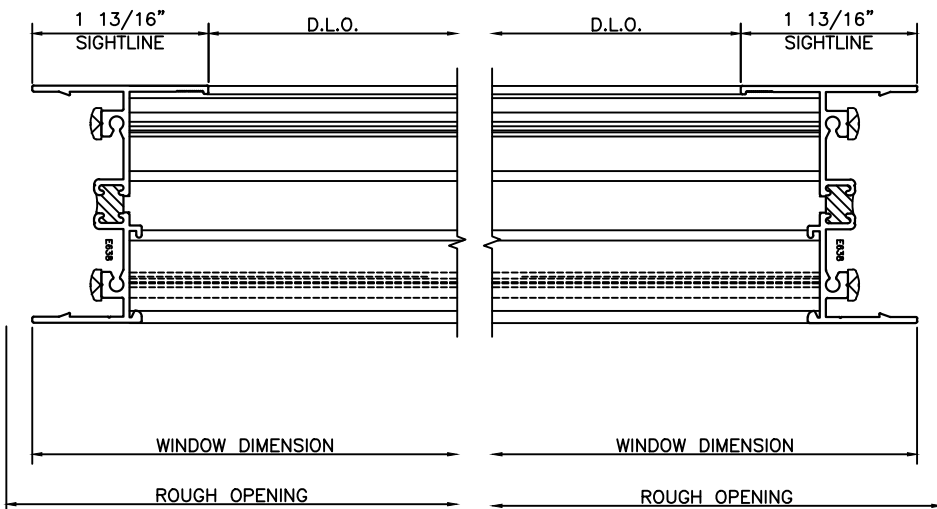


16 FIXED HEAD



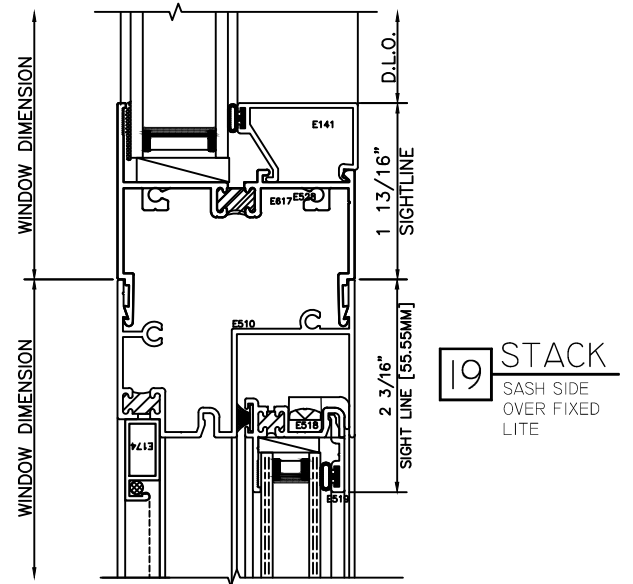
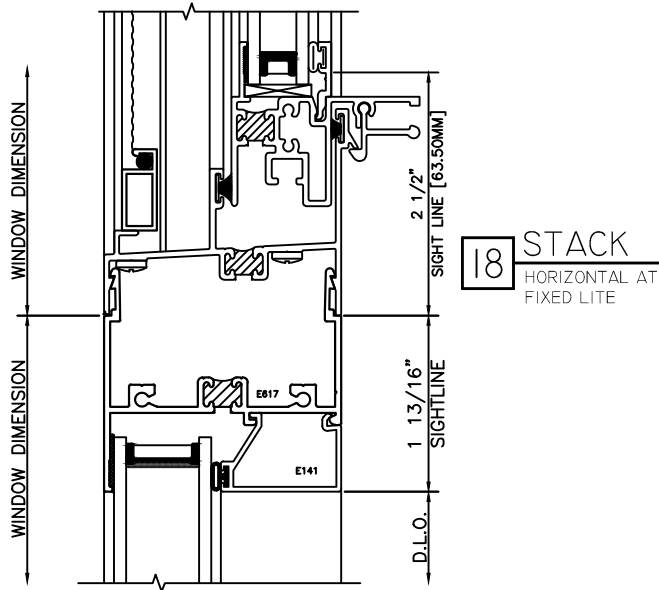
14 FIXED JAMB
AT O.G. LOUVER

15 FIXED JAMB
AT O.G. LOUVER



17 FIXED SILL

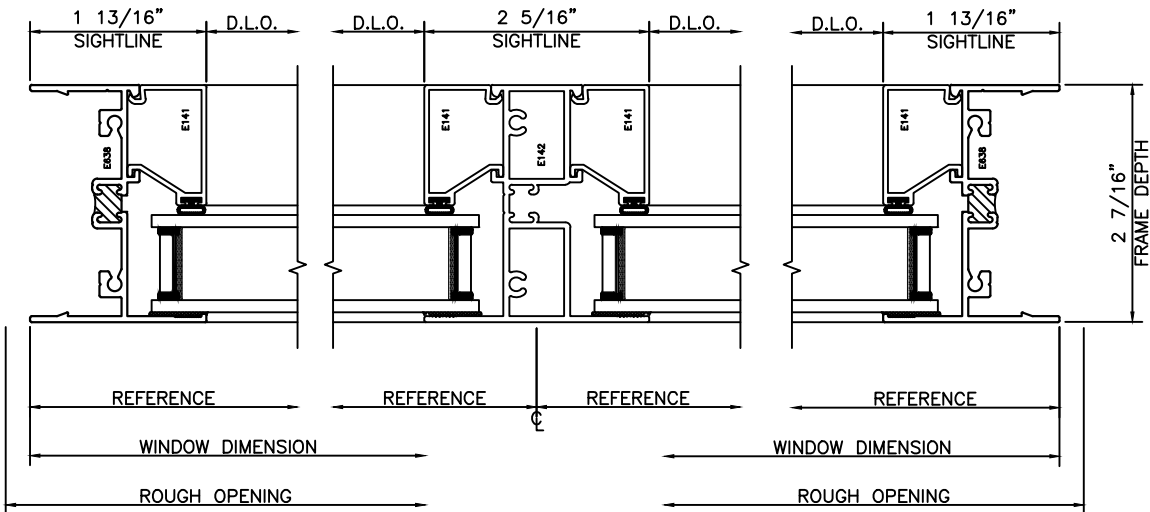
HALF SCALE DETAILS



20 FIXED JAMB

21 VERT. MUNTIN

22 FIXED JAMB



HALF SCALE DETAILS